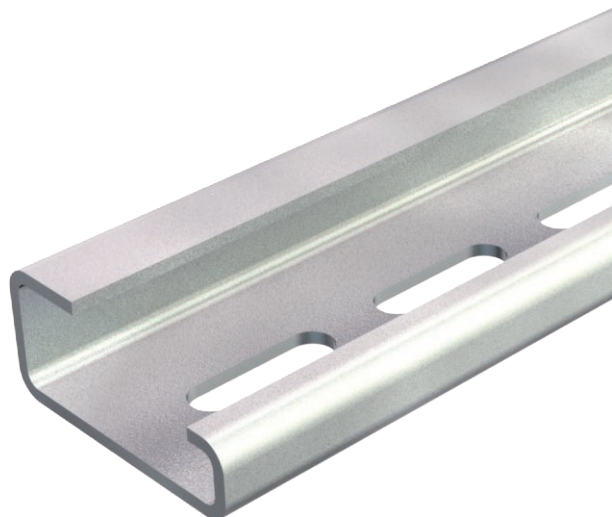


Technical data sheet

Support rail perforated

Item no. 1115065



G rail G32 to DIN EN 50035 (previously DIN 46277 Part 1)
Support rail width 32 mm



St Steel
GTP Electrogalvanised, transparently passivated

Additional product text, instruction
Support rail width 32 mm.

Master data

Item no.	1115065
Type	2064 GTPL 2M
Description 1	Carrier rail
Description 2	perforated
Dimension	2000x32x15
Material	Steel
Material symbol	St
Surface	Electrogalvanised, transparently passivated
Surface symbol	GTP
Smallest sales unit (VG)	2,00 m
Weight	69,00 kg/100 m

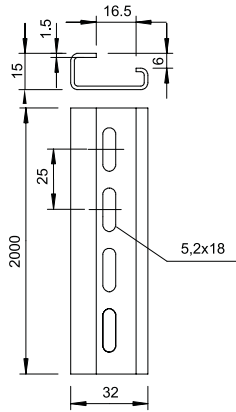
Technical data sheet

Support rail perforated

Item no. 1115065



Technical data



Length	2.000,00 mm
Width	32,00 mm
Height	15,00 mm
lampDimension WxH	32 x 15 mm
Version	Perforated
Rails version	G rail
Material thickness	1,50 mm
Bundle	20,00 m
Drill hole spacing, centre	25,00 mm
Hole shape	Long slot
With perforation	<input checked="" type="checkbox"/>