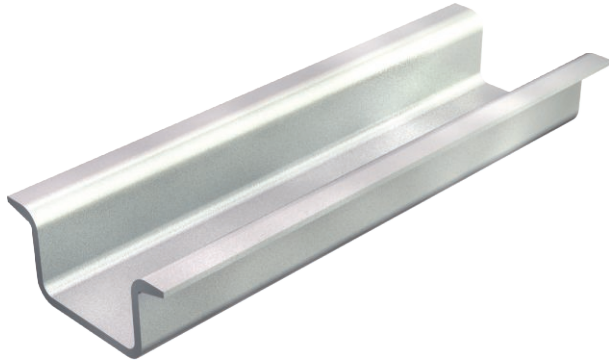


# Technical data sheet

## Hat profile rail, unperforated

Item no. 1115421



Hat profile rail 35 x 15 mm similar to DIN EN 60715 (formerly DIN EN 50022), but with material thickness 1.5 mm.

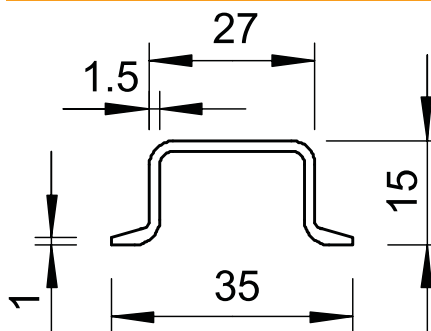


**St** Steel  
**GTP** Electrogalvanised, transparently passivated

### Master data

Item no.	1115421
Type	2069 15 1.5 GTP
Description 1	Top hat rail
Description 2	unperforated, 1.5 mm thick
Dimension	2000x35x15
Material	Steel
Material symbol	St
Surface	Electrogalvanised, transparently passivated
Surface symbol	GTP
Smallest sales unit (VG)	2,00 m
Weight	66,00 kg/100 m

### Technical data



Length	2.000,00 mm
Width	35,00 mm
Height	15,00 mm
lampDimension WxH	35 x 15 mm
Version	Unperforated
Rails version	Support rail DIN EN 60715
Material thickness	1,50 mm
Bundle	20,00 m
Hole shape	Without
With perforation	<input type="checkbox"/>