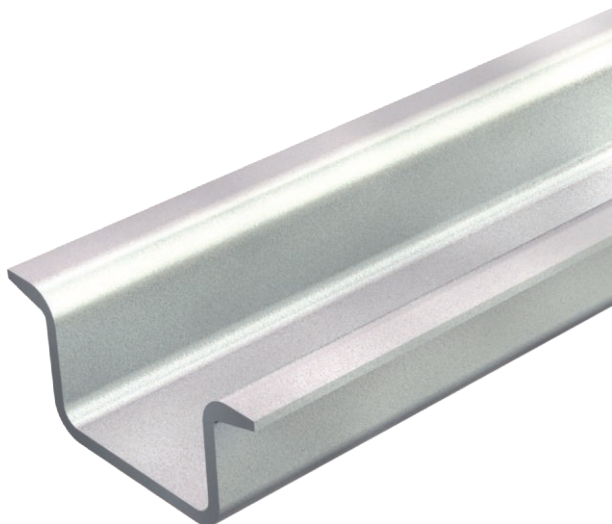


# Technical data sheet

## Hat profile rail, unperforated

Item no. 1115553



Hat profile rail 35 x 15 mm to DIN EN 60715 (formerly DIN EN 50022).



**St** Steel  
**GTP** Electrogalvanised, transparently passivated

### Master data

|                          |   |
|--------------------------|---|
| Item no.                 | 1115553                                     |
| Type                     | 2069 15 2.2 GTP                             |
| Description 1            | Top hat rail                                |
| Description 2            | unperforated, 2.25 mm thick                 |
| Dimension                | 2000x35x15                                  |
| Material                 | Steel                                       |
| Material symbol          | St  |
| Surface                  | Electrogalvanised, transparently passivated |
| Surface symbol           | GTP   |
| Smallest sales unit (VG) | 2,00 m                                      |
| Weight                   | 97,00 kg/100 m                              |

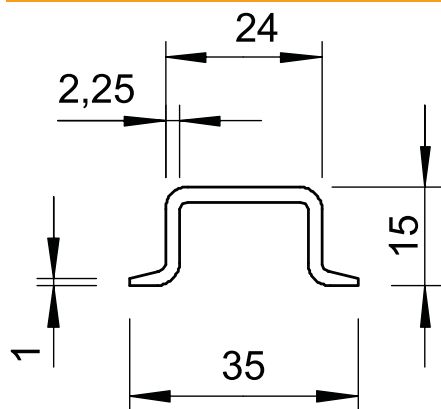
# Technical data sheet

## Hat profile rail, unperforated



Item no. 1115553

### Technical data



|                    |                           |
|--------------------|---------------------------|
| Length             | 2.000,00 mm               |
| Width              | 35,00 mm                  |
| Height             | 15,00 mm                  |
| lampDimension WxH  | 35 x 15 mm                |
| Version            | Unperforated              |
| Rails version      | Support rail DIN EN 60715 |
| Material thickness | 2,25 mm                   |
| Bundle             | 20,00 m                   |
| Hole shape         | Without                   |
| With perforation   | <input type="checkbox"/>  |