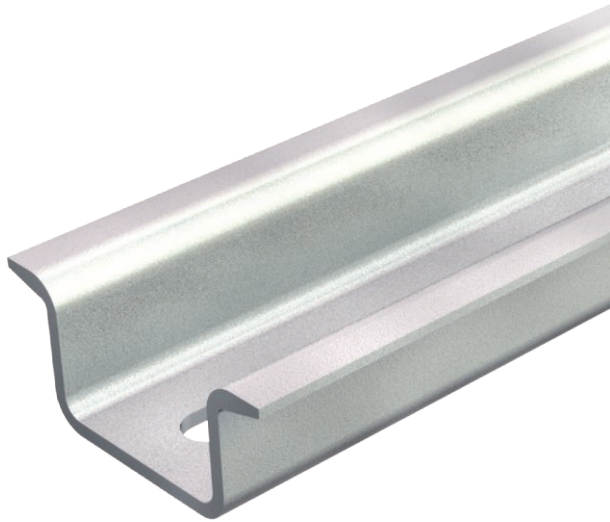


Technical data sheet

Hat profile rail, perforated

Item no. 1115456



Hat profile rail 35 x 15 mm similar to DIN EN 60715 (formerly DIN EN 50022), but with material thickness 1.5 mm.



St Steel
GTP Electrogalvanised, transparently passivated

Master data

Item no.	1115456
Type	2069 15 1.5 GTP
Description 1	Top hat rail
Description 2	perforated, 1.5 mm thick
Dimension	2000x35x15
Material	Steel
Material symbol	St
Surface	Electrogalvanised, transparently passivated
Surface symbol	GTP
Smallest sales unit (VG)	2,00 m
Weight	66,00 kg/100 m

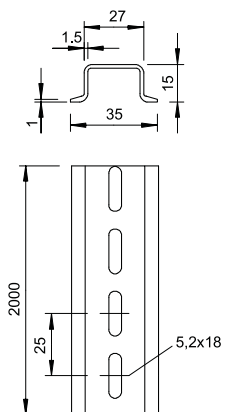
Technical data sheet

Hat profile rail, perforated

Item no. 1115456



Technical data



Length	2.000,00 mm
Width	35,00 mm
Height	15,00 mm
lampDimension WxH	35 x 15 mm
Version	Perforated
Rails version	Support rail DIN EN 60715
Material thickness	1,50 mm
Bundle	20,00 m
Drill hole spacing, centre	25,00 mm
Hole shape	Long slot
With perforation	<input checked="" type="checkbox"/>