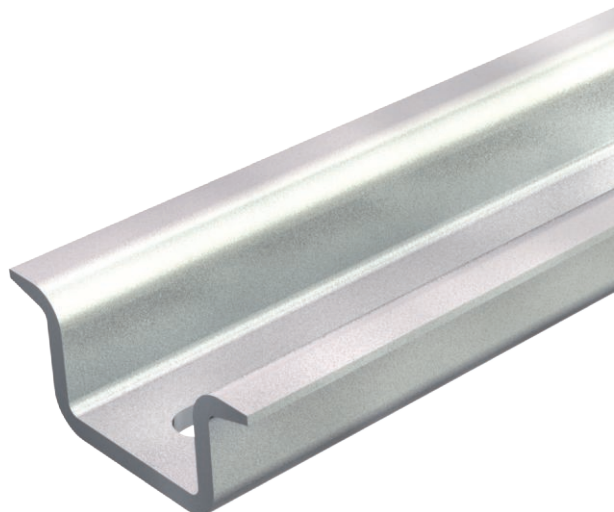


Technical data sheet

Hat profile rail, perforated

Item no. 1115596



Hat profile rail 35 x 15 mm to DIN EN 60715 (formerly DIN EN 50022).



St Steel
GTP Electrogalvanised, transparently passivated

Master data

Item no.	1115596
Type	2069 15 2.2 GTPL
Description 1	Top hat rail
Description 2	perforated, 2.25 mm thick
Dimension	2000x35x15
Material	Steel
Material symbol	St
Surface	Electrogalvanised, transparently passivated
Surface symbol	GTP
Smallest sales unit (VG)	2,00 m
Weight	97,00 kg/100 m

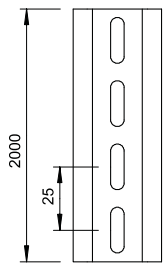
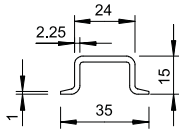
Technical data sheet

Hat profile rail, perforated

Item no. 1115596



Technical data



Length	2.000,00 mm
Width	35,00 mm
Height	15,00 mm
lampDimension WxH	35 x 15 mm
Version	Perforated
Rails version	Support rail DIN EN 60715
Material thickness	2,25 mm
Bundle	20,00 m
Drill hole spacing, centre	25,00 mm
Hole shape	Long slot
With perforation	<input checked="" type="checkbox"/>