

## PRODUCT DATA SHEET

---

Part number 635306

---

EAN 4015609024469

Manufacturer WALTHER-WERKE

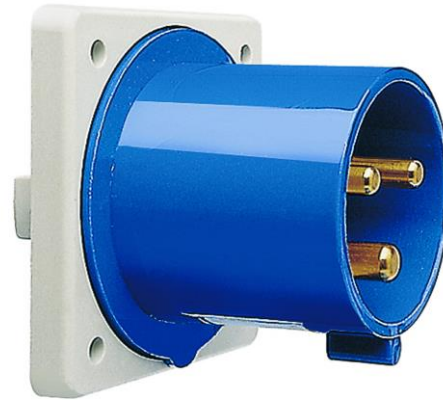
WEEE-Reg.-Number: DE 22131895

---

### Product description

---

Panel appliance inlet straight 32A 3P 6h with  
screwed flange 80x80mm



Product image

### Detailed product description

---

WALTHER Panel appliance inlet 32A 3P 230V 6h IP44  
 straight  
 made from PA6 material  
 with screwed flange  
 flange 80x80  
 fixing center 60x60




### Ordering Information

---

Order unit	Piece
Customs number	85366990
Net weight	0,1526 kg
Packing quantity (VPE)	10
Length of the packaging	0,31 m
Width of the packaging	0,163 m
Depth of the packaging	0,113 m
Gross weight(VPE)	1,638 kg

### Certificates

---

VDE certification	126147	
UL certification	No. E83342	
UL certification	No. E188992	

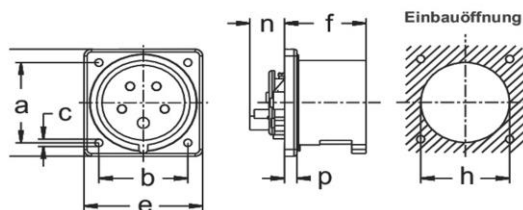
## Classification system

Classification system	ETIM_6.0
ETIM Class	EC001319

## Technical product data

IEC-amperage	32 A
Amperage acc. UL/CSA (for UL-version)	30 A
Number of poles	3
Voltage acc. EN 60309-2	230 V (50+60 Hz) blue
Clock hour position	6 h
Identification colour	Blue
RAL-number	5002
Degree of protection (IP)	IP44
Connection system	Screwed terminal
Connection type	Built-up device plug
Angle of plug	Straight
Material	Plastic

## Dimension sheet



Amp.	16			32		
Pole	3	4	5	3	4	5
a	47	60	60	60	60	60
b	47	60	60	60	60	60
c	5,5	5,5	5,5	5,5	5,5	5,5
d	62	80	80	80	80	80
e	62	80	80	80	80	80
f	47	47	47	56	56	56
h	50	67	67	71	71	71
n	22	22	22	22	22	22
p	8,5	8,5	8,5	8,5	8,5	8,5

Art. 600 ... :	
Amp.	16
Pole	3
a	60
b	60
c	5,5
d	75
e	75
f	47
h	50
n	22
p	8,5