



Cover, Length: 50 mm, Width: 10 mm, Colour: Yellow

RAL: 1026

Business data

Article number	<u>2810.0</u>
Article name	AD 1/50/B YE
GTIN (EAN)	4044211055387
Packaging unit	20
Quantity unit	PC
Weight per piece (not including packaging)	0.8 g
Weight per piece (including packaging)	0.92 g
Unit of weight	G
Customs number	85389099
Country of origin	DE
Product description	Cover
Colour	Yellow

Technical data

Dimensions

Length	50 mm
Width	10 mm

Materials

Material	Polyamide 6.6
Flammability class UL 94	V-2
Working temperature, min.	-40 °C
Working temperature, max.	105 °C

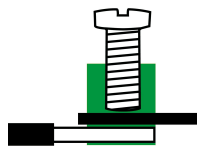
Environmental Product Compliance

REACH Conform	yes
REACH Reference date	2023-06-14
REACH Candidate Substance Note	No
RoHS Conform	yes

Media

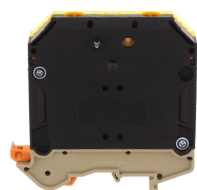
Accessories

##INVERSE##CONTA-CONNECT



Feed-through terminal for direct mount, Screw connection, Mounting type: Mounting surface, Rated cross-section: 50 mm², Width: 20 mm, Colour: Beige

Article number	Article name	GTIN (EAN)	Packaging unit
<u>1582.2</u>	RK 50-D BG	4044211047702	10



Feed-through terminal, Screw connection, Mounting type: Mounting rail TS 35/7.5 and TS 32, Rated cross-section: 50 mm², Width: 20 mm, Colour: Black-yellow

Article number	Article name	GTIN (EAN)	Packaging unit
<u>1567.2</u>	RK 50/PE BKYE	4044211047382	10 ST



Feed-through terminal, Screw connection, Mounting type: Mounting rail TS 35/7.5 and TS 32, Rated cross-section: 50 mm², Width: 20 mm, Colour: Beige

Article number	Article name	GTIN (EAN)	Packaging unit
<u>1120.2</u>	RK 50 BG	4044211018702	10



Ex feed-through terminal ATEX-certified, Screw connection, Mounting type: Mounting rail TS 35/7.5 and TS 32, Rated cross-section: 50 mm², Width: 20 mm, Colour: Beige

Article number	Article name	GTIN (EAN)	Packaging unit
<u>1473.2</u>	RK 50 Ex BG	4044211107901	10