

# Data sheet

## 2965.0 AD 1/6 WH



Cover, Length: 26.5 mm, Width: 6 mm, Colour: White

**RAL:** 9010

### Business data

Article number	<u>2965.0</u>
Article name	AD 1/6 WH
GTIN (EAN)	4044211056940
Packaging unit	50
Quantity unit	PC
Weight per piece (not including packaging)	0.27 g
Weight per piece (including packaging)	0.29 g
Unit of weight	G
Customs number	85389099
Country of origin	DE
Product description	Cover
Colour	White

# Data sheet

## 2965.0 AD 1/6 WH

---

### Technical data

---

#### Dimensions

Length	26.5 mm
--------	---------

Width	6 mm
-------	------

#### Materials

Material	Polyamide 6.6
----------	---------------

Flammability class UL 94	V-2
--------------------------	-----

Working temperature, min.	-40 °C
---------------------------	--------

Working temperature, max.	105 °C
---------------------------	--------

#### Environmental Product Compliance

REACH Conform	yes
---------------	-----

REACH Reference date	2023-06-14
----------------------	------------

REACH Candidate Substance Note	No
--------------------------------	----

RoHS Conform	yes
--------------	-----

# Data sheet

2965.0 AD 1/6 WH



---

Media

---

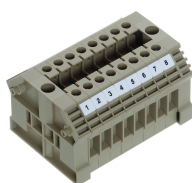
### Accessories

#### ##INVERSE##CONTA-CONNECT



Feed-through terminal/block variant, Screw connection, Mounting type: Mounting rail TS 35/7.5 and TS 32, Rated cross-section: 4 mm<sup>2</sup>, Colour: Beige

Article number	Article name	GTIN (EAN)	Packaging unit
<u>1003.2</u>	KBL 2,5-4 beids. Bez-g (1-9) BG	4044211000721	10 ST



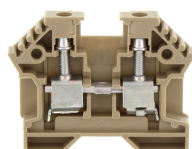
Feed-through terminal for direct mount/block variant, Screw connection, Mounting type: Mounting surface, Rated cross-section: 4 mm<sup>2</sup>, Colour: Beige

Article number	Article name	GTIN (EAN)	Packaging unit
<u>1385.2</u>	KBL 2,5-4/10-D BG	4044211044268	10



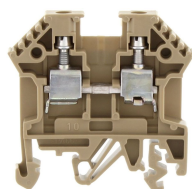
Feed-through terminal/block variant, Screw connection, Mounting type: Mounting rail TS 35/7.5 and TS 32, Rated cross-section: 4 mm<sup>2</sup>, Colour: Beige

Article number	Article name	GTIN (EAN)	Packaging unit
<u>1002.2</u>	KBL 2,5-4 BG	4044211000516	10 ST



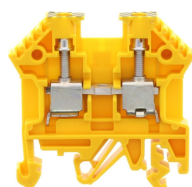
Feed-through terminal for direct mount/block variant, Screw connection, Mounting type: Mounting surface, Rated cross-section: 4 mm<sup>2</sup>, Width: 6 mm, Colour: Beige

Article number	Article name	GTIN (EAN)	Packaging unit
<u>1388.2</u>	KBL 2,5-4-D BG	4044211044299	100



Feed-through terminal, Screw connection, Mounting type: Mounting rail TS 35/7.5 and TS 32, Rated cross-section: 4 mm<sup>2</sup>, Width: 6 mm, Colour: Beige

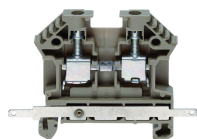
Article number	Article name	GTIN (EAN)	Packaging unit
<u>1001.2</u>	RK 2,5-4 BG	4044211000240	100



Feed-through terminal, Screw connection, Mounting type: Mounting rail TS 35/7.5 and TS 32, Rated cross-section: 4 mm<sup>2</sup>, Width: 6 mm, Colour: Black-yellow

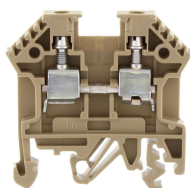
Article number	Article name	GTIN (EAN)	Packaging unit
<u>1563.2</u>	RK 2,5-4/PE BKYE	4044211047344	100 ST

### ##INVERSE##CONTA-CONNECT



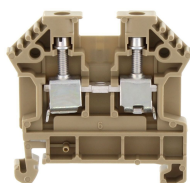
Feed-through terminal, Screw connection, Mounting type: Mounting rail TS 35/7.5, Rated cross-section: 4 mm<sup>2</sup>, Width: 6 mm, Colour: Beige

Article number	Article name	GTIN (EAN)	Packaging unit
<u>1167.2</u>	RK 2,5-4/35/SAS BG	4044211128623	100



Ex feed-through terminal ATEX-certified, Screw connection, Mounting type: Mounting rail TS 35/7.5 and TS 32, Rated cross-section: 4 mm<sup>2</sup>, Width: 6 mm, Colour: Beige

Article number	Article name	GTIN (EAN)	Packaging unit
<u>1427.2</u>	RK 2,5-4 Ex BG	4044211044732	100



Feed-through terminal, Screw connection, Mounting type: Mounting rail TS 35/7.5, Rated cross-section: 4 mm<sup>2</sup>, Width: 6 mm, Colour: Beige

Article number	Article name	GTIN (EAN)	Packaging unit
<u>1577.2</u>	RK 2,5-4/35 BG	4044211047566	100