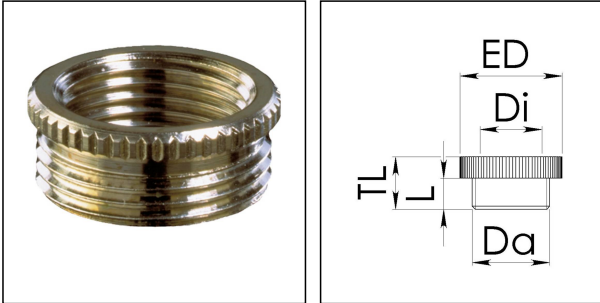


AMMP 40/29

Adaptor, brass nickel-plated, M40 / Pg29



Products may differ in size, colour and appearance to those shown. If you require further information or customisation, please contact us directly.



Material	Brass nickel-plated
Temp. range min	-200 °C
Temp. range max	250 °C
Thread type outer	M
Ø outer thread	40
Lead outer	1,5
Length screw-in thread L	8 mm
Thread type inner	PG
Ø inner thread	29
External diameter ED	45 mm
Total length TL	11,5 mm
Form	B
Surface	Nickel-plated
Order no. nickel-plated	10063930
Type	AMMP 40/29
Packing unit	25
EAN number	4007685639309
Tariff number	74198090
ETIM-Classification	EC000938

Recommended accessories

EMMU 40	10063146
ORD-E 40	10064702

Your Contact:

WISKA Hoppmann GmbH

Kisdorfer Weg 28 · 24568 Kaltenkirchen · Germany

☎ +49-4191-508-0 · 📠 +49-4191-508-209

contact@wiska.de · www.wiska.com

22.11.2023

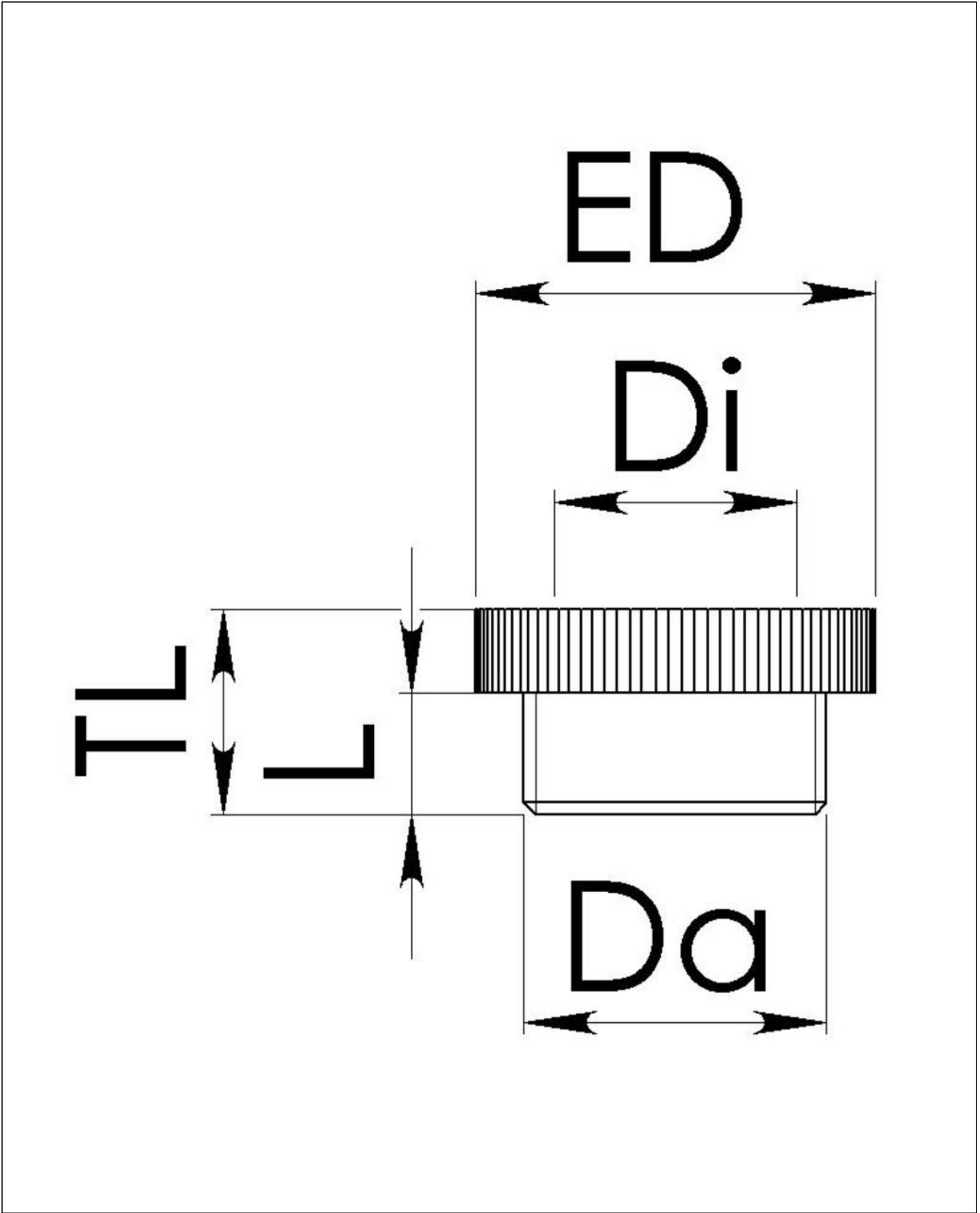
Your Contact:

WISKA Hoppmann GmbH

Kisdorfer Weg 28 · 24568 Kaltenkirchen · Germany

☎ +49-4191-508-0 · 📠 +49-4191-508-209

contact@wiska.de · www.wiska.com



Your Contact:
WISKA Hoppmann GmbH
Kisdorfer Weg 28 · 24568 Kaltenkirchen · Germany
☎ +49-4191-508-0 · 📠 +49-4191-508-209
contact@wiska.de · www.wiska.com