



Disconnect plug with wire bridge, Colour: Yellow

RAL: 1026

Business data

Article number	<u>1400.2</u>
Article name	DS 1/TRK 1,5 YE
GTIN (EAN)	4044211044473
Packaging unit	50
Quantity unit	PC
Weight per piece (not including packaging)	3.8 g
Weight per piece (including packaging)	3.87 g
Unit of weight	G
Customs number	85369010
Country of origin	BG
Product description	Disconnect plug
Colour	Yellow

Technical data

Ratings

Overvoltage category	III
Contamination degree	3

Connection data

Connection principle	Plug in
----------------------	---------

Further technical data

Mounting type	Plug in
---------------	---------

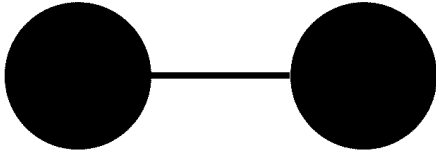
Environmental Product Compliance

REACH Conform	yes
REACH Reference date	2023-06-14
REACH Candidate Substance Note	No
RoHS Conform	yes

Data sheet

1400.2 DS 1/TRK 1,5 YE

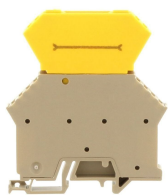
Media



Accessories

1400.2 DS 1/TRK 1,5 YE

Terminal blocks



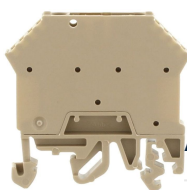
Disconnect terminal, Screw connection, Mounting type: Mounting rail TS 15/5.5, Rated cross-section: 2.5 mm², Width: 6 mm, Colour: Beige

Article number	Article name	GTIN (EAN)	Packaging unit
<u>1396.2</u>	TRK 1,5/15/DS BG	4044211044435	50 ST



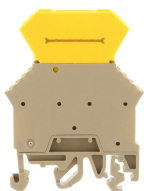
Disconnect terminal, Screw connection, Mounting type: Mounting rail TS 15/5.5, Rated cross-section: 2.5 mm², Width: 6 mm, Colour: Beige

Article number	Article name	GTIN (EAN)	Packaging unit
<u>1397.2</u>	TRK 1,5/15/STB/DS BG	4044211044442	50 ST



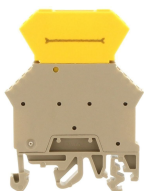
Disconnect terminal, Screw connection, Mounting type: Mounting rail TS 35/7.5 and TS32, Rated cross-section: 2.5 mm², Width: 6 mm, Colour: Beige

Article number	Article name	GTIN (EAN)	Packaging unit
<u>1399.2</u>	TRK 1,5/STB BG	4044211044466	100 ST



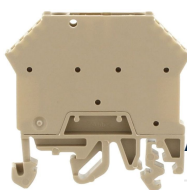
Disconnect terminal, Screw connection, Mounting type: Mounting rail TS 35/7.5 and TS32, Rated cross-section: 2.5 mm², Width: 6 mm, Colour: Beige

Article number	Article name	GTIN (EAN)	Packaging unit
<u>1394.2</u>	TRK 1,5/DS BG	4044211044411	50 ST



Disconnect terminal, Screw connection, Mounting type: Mounting rail TS 35/7.5 and TS32, Rated cross-section: 2.5 mm², Width: 6 mm, Colour: Beige

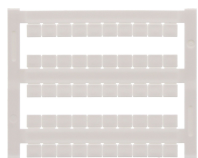
Article number	Article name	GTIN (EAN)	Packaging unit
<u>1395.2</u>	TRK 1,5/STB/DS BG	4044211044428	50 ST



Disconnect terminal, Screw connection, Mounting type: Mounting rail TS 35/7.5 and TS32, Rated cross-section: 2.5 mm², Width: 6 mm, Colour: Beige

Article number	Article name	GTIN (EAN)	Packaging unit
<u>1398.2</u>	TRK 1,5 BG	4044211044459	100 ST

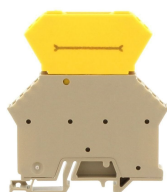
Quick marking



Terminal marker / Pocket Maxicard, Length: 5 mm, Width: 6 mm, Colour: White

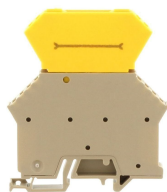
Article number	Article name	GTIN (EAN)	Packaging unit
<u>4702.7</u>	PMC SB 6/50 WH	4044211089986	500 ST

##INVERSE##CONTA-CONNECT



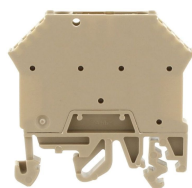
Disconnect terminal, Screw connection, Mounting type: Mounting rail TS 15/5.5, Rated cross-section: 2.5 mm², Width: 6 mm, Colour: Beige

Article number	Article name	GTIN (EAN)	Packaging unit
<u>1396.2</u>	TRK 1,5/15/DS BG	4044211044435	50 ST



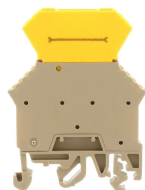
Disconnect terminal, Screw connection, Mounting type: Mounting rail TS 15/5.5, Rated cross-section: 2.5 mm², Width: 6 mm, Colour: Beige

Article number	Article name	GTIN (EAN)	Packaging unit
<u>1397.2</u>	TRK 1,5/15/STB/DS BG	4044211044442	50 ST



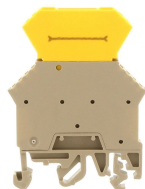
Disconnect terminal, Screw connection, Mounting type: Mounting rail TS 35/7.5 and TS 32, Rated cross-section: 2.5 mm², Width: 6 mm, Colour: Beige

Article number	Article name	GTIN (EAN)	Packaging unit
<u>1399.2</u>	TRK 1,5/STB BG	4044211044466	100 ST



Disconnect terminal, Screw connection, Mounting type: Mounting rail TS 35/7.5 and TS 32, Rated cross-section: 2.5 mm², Width: 6 mm, Colour: Beige

Article number	Article name	GTIN (EAN)	Packaging unit
<u>1394.2</u>	TRK 1,5/DS BG	4044211044411	50 ST

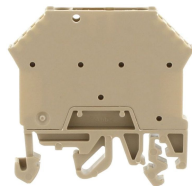


Disconnect terminal, Screw connection, Mounting type: Mounting rail TS 35/7.5 and TS 32, Rated cross-section: 2.5 mm², Width: 6 mm, Colour: Beige

Article number	Article name	GTIN (EAN)	Packaging unit
<u>1395.2</u>	TRK 1,5/STB/DS BG	4044211044428	50 ST

1400.2 DS 1/TRK 1,5 YE

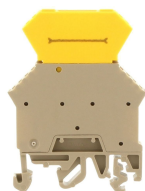
##INVERSE##CONTA-CONNECT



Disconnect terminal, Screw connection, Mounting type: Mounting rail TS 35/7.5 and TS 32, Rated cross-section: 2.5 mm², Width: 6 mm, Colour: Beige

Article number	Article name	GTIN (EAN)	Packaging unit
<u>1398.2</u>	TRK 1,5 BG	4044211044459	100 ST

##INVERSE##CONTA-CONNECT



Disconnect terminal, Screw connection, Mounting type: Mounting rail TS 35/7.5 and TS 32, Rated cross-section: 2.5 mm², Width: 6 mm, Colour: Beige

Article number	Article name	GTIN (EAN)	Packaging unit
<u>1395.2</u>	TRK 1,5/STB/DS BG	4044211044428	50 ST