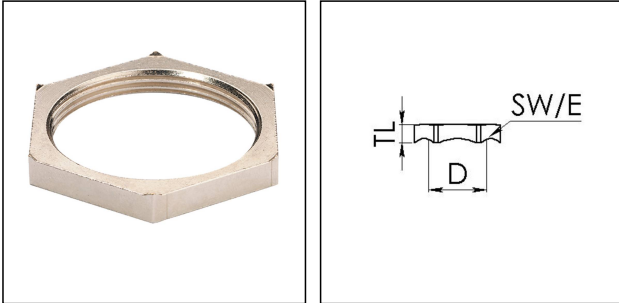


EMMU-EMV 63

EMC-locknut, brass nickel-plated, M63



Products may differ in size, colour and appearance to those shown. If you require further information or customisation, please contact us directly.



Material	Brass nickel-plated
Thread type	M
Ø Connection thread D	63
Lead	1,5
Key width SW	70 mm
Total length TL	7 mm
Surface	Nickel-plated
Order no. nickel-plated	10063217
Type	EMMU-EMV 63
Packing unit	25
Tariff number	74153300
ETIM-Classification	EC000940

04.12.2023

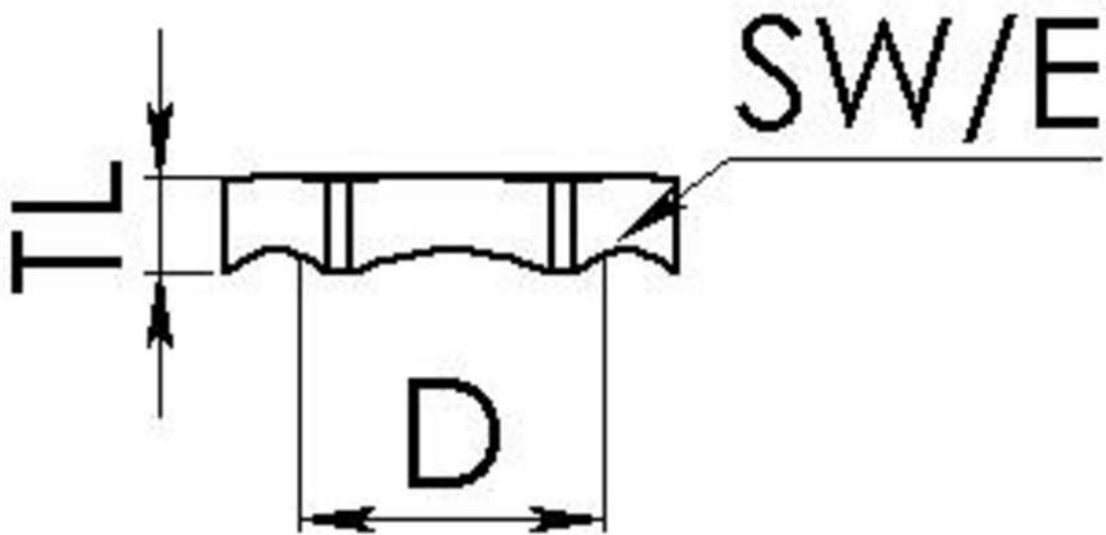
Your Contact:

WISKA Hoppmann GmbH

Kisdorfer Weg 28 · 24568 Kaltenkirchen · Germany

☎ +49-4191-508-0 · 📠 +49-4191-508-209

contact@wiska.de · www.wiska.com



Your Contact:

WISKA Hoppmann GmbH

Kisdorfer Weg 28 · 24568 Kaltenkirchen · Germany

☎ +49-4191-508-0 · 📠 +49-4191-508-209

contact@wiska.de · www.wiska.com