

EMT-F 32 WH

Membrane spout, flame retardant, TPE, white, M32



Products may differ in size, colour and appearance to those shown. If you require further information or customisation, please contact us directly.



Material	TPE, flame-retardant
Temp. range min	-40 °C
Temp. range max	80 °C
Glow wire test	960 °C
Protection class	IP66
Ø Connection thread D	32
Length screw-in thread L	9,5 mm
Ø cable diameter min	1 mm
Ø cable diameter max	25 mm
External diameter ED	37 mm
Total length TL	11 mm
Ø Drilling	30 mm - 31,2 mm
Wall thickness S	2 mm
Product Color	white
Order no. RAL 9001	10063011
Type	EMT-F 32 WH
Packing unit	100
EAN number	4007685630115
Tariff number	39269097
ETIM-Classification	EC000451

05.12.2023

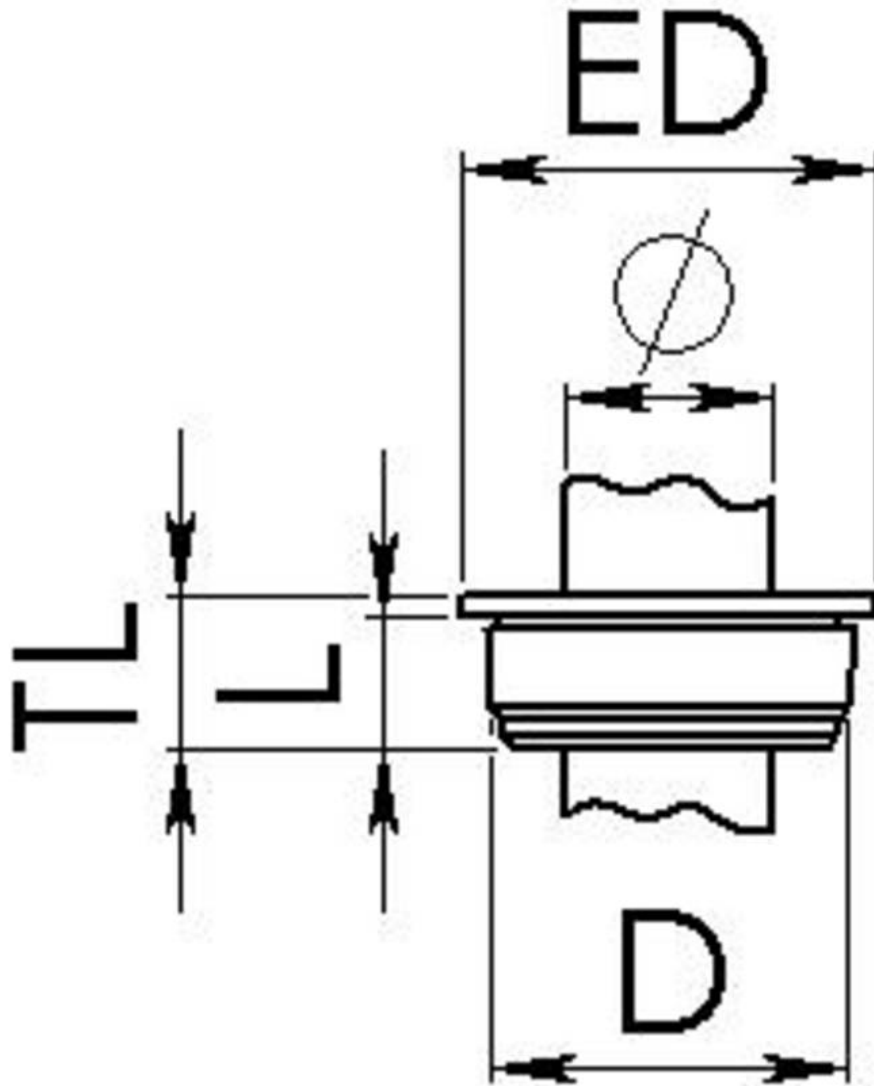
Your Contact:

WISKA Hoppmann GmbH

Kisdorfer Weg 28 · 24568 Kaltenkirchen · Germany

☎ +49-4191-508-0 · 📠 +49-4191-508-209

contact@wiska.de · www.wiska.com



Your Contact:

WISKA Hoppmann GmbH

Kisdorfer Weg 28 · 24568 Kaltenkirchen · Germany

☎ +49-4191-508-0 · 📠 +49-4191-508-209

contact@wiska.de · www.wiska.com