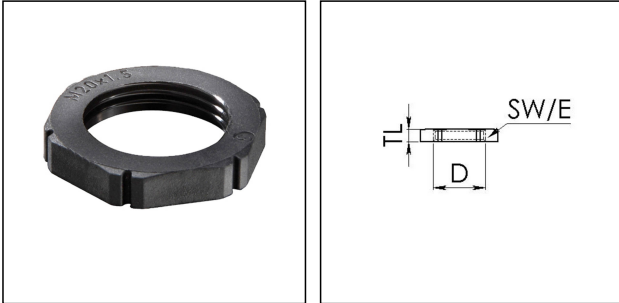


EMUG 16 BK

Locknut, polyamide, RAL 9005, M16



Products may differ in size, colour and appearance to those shown. If you require further information or customisation, please contact us directly.



Material	Polyamide, fibre reinforced
Temp. range min	-40 °C
Temp. range max	100 °C
Glow wire test	650 °C
Thread type	M
Ø Connection thread D	16
Lead	1,5
Total length TL	5 mm
Key width SW	22 mm
Collar diameter (E)	24 mm
Product Color	RAL 9005
Order no. RAL 9005	10061781
Type	EMUG 16 BK
Packing unit	100
EAN number	4007685617819
Tariff number	39269097
ETIM-Classification	EC000940

05.12.2023

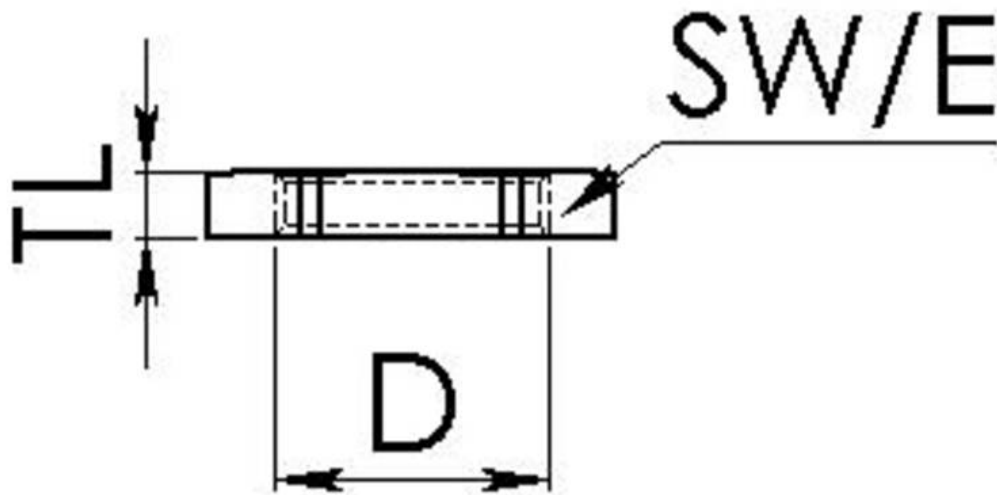
Your Contact:

WISKA Hoppmann GmbH

Kisdorfer Weg 28 · 24568 Kaltenkirchen · Germany

☎ +49-4191-508-0 · 📠 +49-4191-508-209

contact@wiska.de · www.wiska.com



Your Contact:

WISKA Hoppmann GmbH

Kisdorfer Weg 28 · 24568 Kaltenkirchen · Germany

☎ +49-4191-508-0 · 📠 +49-4191-508-209

contact@wiska.de · www.wiska.com