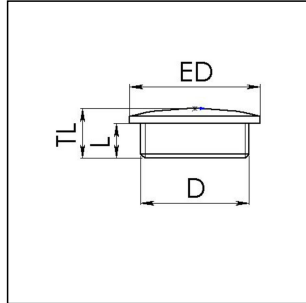


EMVS 63

Stop end, brass nickel-plated, M63



Products may differ in size, colour and appearance to those shown. If you require further information or customisation, please contact us directly.



Material	Brass nickel-plated
Surface	Nickel-plated
Temp. range min	-200 °C
Temp. range max	250 °C
Protection class	IP54
Thread type	M
Ø Connection thread D	63
Lead	1,5
Length screw-in thread L	10 mm
External diameter ED	67 mm
Total length TL	16 mm
Advice	with O-ring IP66/IP68
Order no. nickel-plated	10063158
Type	EMVS 63
Packing unit	10
EAN number	4007685631587
Tariff number	74198090
ETIM-Classification	EC000032

Recommended accessories

EMMU 63	10063148
ORD-E 63	10064704

05.12.2023

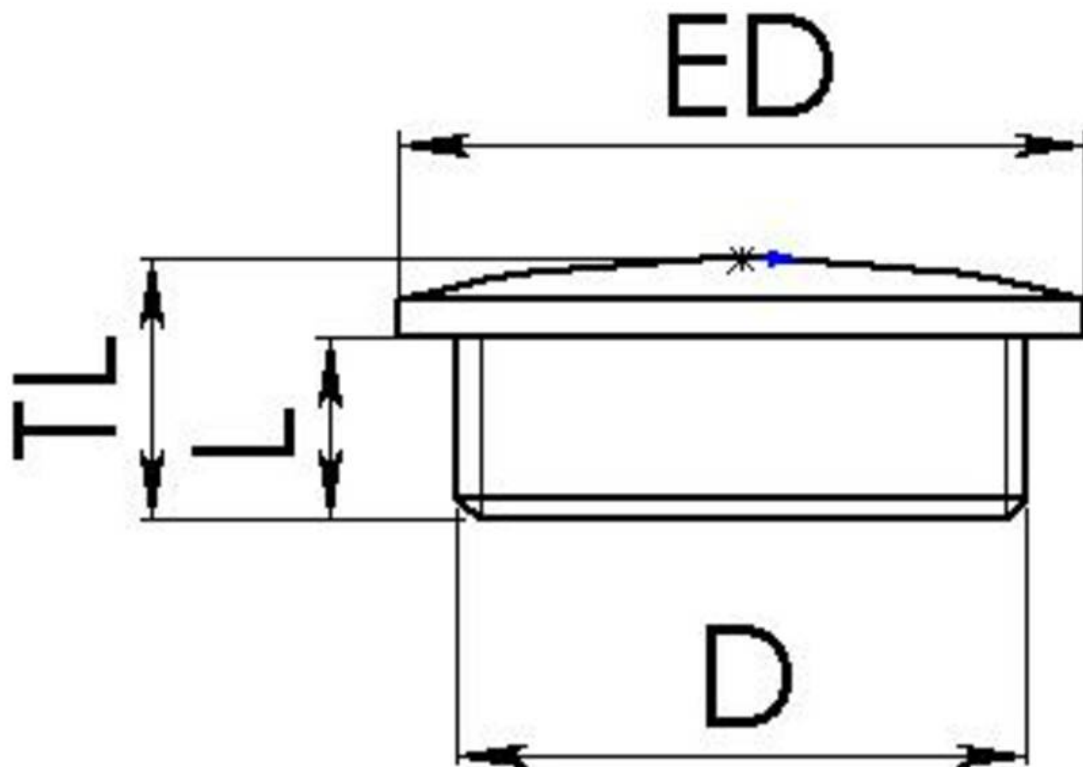
Your Contact:

WISKA Hoppmann GmbH

Kisdorfer Weg 28 · 24568 Kaltenkirchen · Germany

☎ +49-4191-508-0 · 📠 +49-4191-508-209

contact@wiska.de · www.wiska.com



Your Contact:

WISKA Hoppmann GmbH

Kisdorfer Weg 28 · 24568 Kaltenkirchen · Germany

☎ +49-4191-508-0 · 📠 +49-4191-508-209

contact@wiska.de · www.wiska.com