

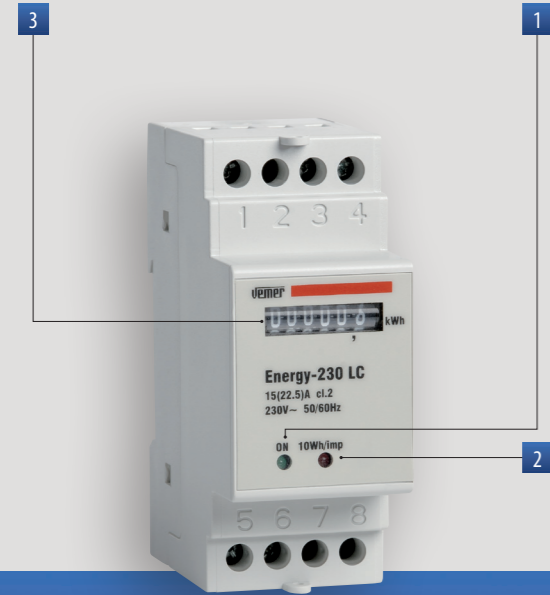
# Energy meters

## ENERGY-230 LC

### DIMENSIONS (mm)

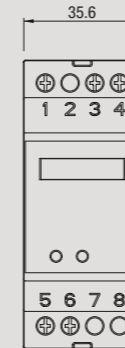
### CONNECTION DIAGRAM

Static energy meters to view the consumption of active energy in 230 V single-phase systems.

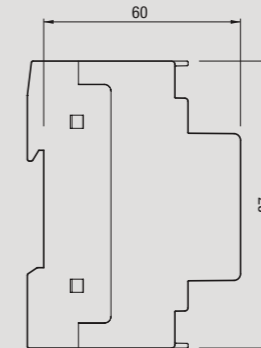


- 1 L1 Green LED: power: ON
- 2 "Flashing" Red Led: active energy consumption every flash = 10 Wh
- 3 Non zeroable total energy meter

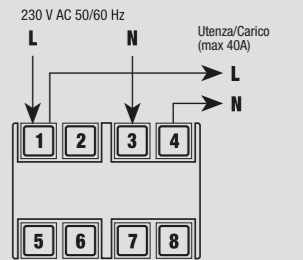
#### Front view



#### Side view



#### Diagram



## MEASUREMENT AND CONTROL

### DIRECT CONNECTION SINGLE-PHASE METER

- Power supply: 230 V AC (-15% ÷ +10%)
- Fastening: DIN rail
- Class 2 index
- Max measurable current: 22.5 A
- Static meter with direct connection max 22.5 A
- Electromechanic numerator with 5 digits + decimal
- Active energy consumption indication 1 LAMP = 10 Wh
- Format 2 DIN modules

### TECHNICAL INFORMATION

#### GENERAL CHARACTERISTICS

Power supply	V AC	230 (-15 ÷ +10%)
Frequency	Hz	45 / 65
Electromechanic numerator		5 digits + decimal
Reading resolution	kWh	0.1
Precision		Class 2 (EN 62053-21)
Absorption	Voltmetric circuit	VA 4
	Amperometric circuit	VA 2
Nominal current	A	15
Maximum current	A	22.5
Minimum starting current	mA	<50
Operating temperature	°C	-10 ÷ +45
Storage temperature	°C	-25 ÷ +70
Container		2 DIN modules
Humidity		10 ÷ 90% non condensing
Degree of protection		IP20 / 51 frontal

#### REFERENCE STANDARDS

Compliance with Community Directives: 2014/35/EU (LVD) and 2014/30/EU (EMCD) is declared in reference to the following Standards: EN 61010-1 • EN 61000-6-2 and EN 61000-6-4

Code	Model	Description
VN960100	Energy-230 LC	Single-phase energy meter