

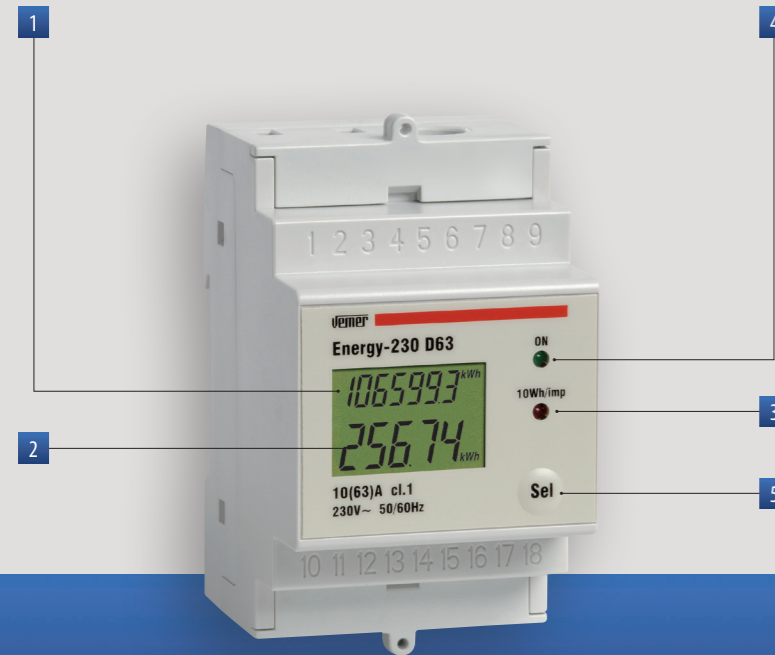
Energy meters

ENERGY-230 D63

DIMENSIONS (mm)

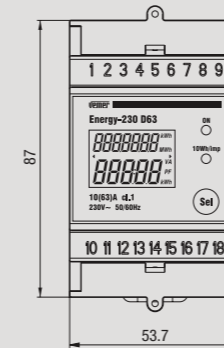
CONNECTION DIAGRAM

Static meters with LCD display to view the consumption of active energy in 230 V single-phase systems.

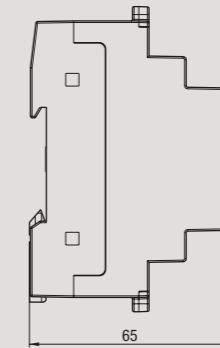


- 1 Non zeroable total meter
- 2 Zeroable partial meter
- 3 Consumption count LED
- 4 Power supply signalling LED
- 5 Programming button

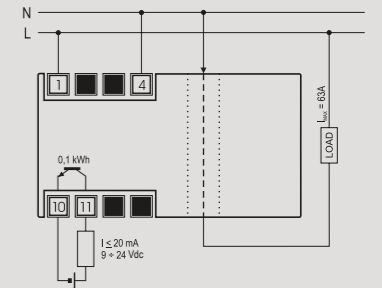
Front view



Side view



Diagram



MEASUREMENT AND CONTROL

TECHNICAL INFORMATION

DIRECT CONNECTION SINGLE-PHASE METER

- Base current: 10 A
- Max input current: 63 A
- Connection via direct passage of the current cable (max. sect. 25 mm²) in vertical section on the container body
- View via 7 digits (total energy) + 5 digits (partial energy) LCD display
- Active energy consumption indication 1 FLASH = 10 Wh
- Container 3 DIN modules
- Pulse output for PC view of the energy consumed, through specific software and relevant concentrator module
- Electrically insulated amperometric input
- Incorrect connection indication

GENERAL CHARACTERISTICS

| | | |
|----------------------|--------------------|--------------------------|
| Power supply | V AC | 230 (-15 ÷ +10) |
| Frequency | Hz | 50 / 60 |
| LCD numerator | | 7 + 5 digits |
| Reading resolution | kWh | 0.1 |
| Precision | Active energy | Class 1 (EN 62053-21) |
| Absorption | Voltmetric circuit | VA <2.5 |
| | Amperom. circuit | VA <2.5 |
| Nominal current | A | 10 |
| Degree of protection | | IP20 / 51 on the front |

| | | |
|---------------------------|----------------|----------------------------|
| Maximum current | A | 63 |
| Minimum starting current | mA | <40 |
| Optoisolated pulse output | Pulse weight | kWh 0.1 |
| | Pulse duration | ms 100 |
| | Pulse voltage | V DC 9 ÷ 24 |
| | Output current | mA <20 |
| Operating temperature | °C | -10 ÷ +45 |
| Storage temperature | °C | -20 ÷ +60 |
| Container | | 3 DIN modules |
| Humidity | | 10 ÷ 90% non condensing |

| Code | Model | Description | Dimensions |
|----------|----------------|--|---------------|
| VN973400 | Energy-230 D63 | 63 A direct connection single-phase energy meter | 3 DIN modules |

REFERENCE STANDARDS

Compliance with Community Directives: 2014/35/EU (LVD) and 2014/30/EU (EMCD) is declared with reference to the following Standards: EN 61010-1 • EN 61000-6-2 / EN 61000-6-4