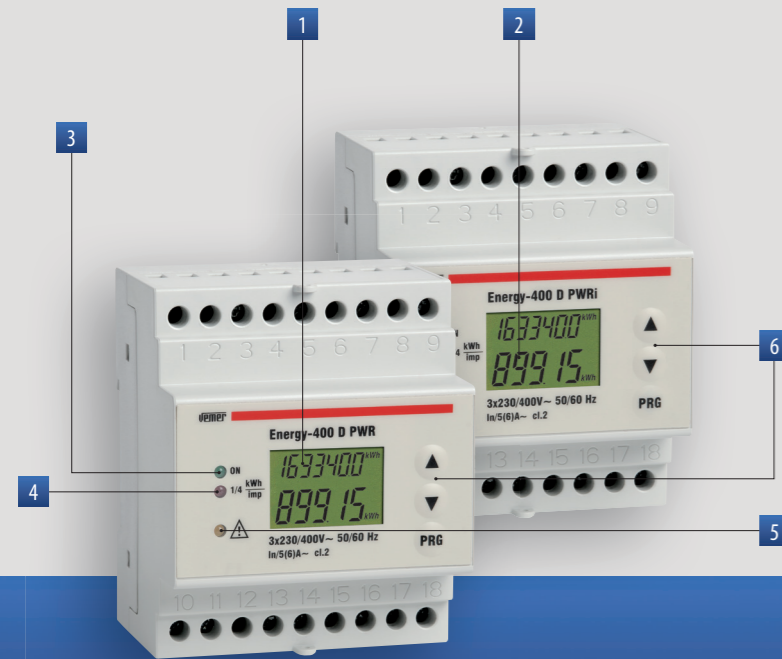


# Energy meters

## ENERGY-400D PWR ENERGY-400D PWRi

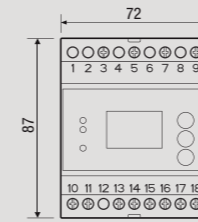
Static meters to view the consumption of active energy in 400 V three-phase systems.



- 1 Non zeroable total energy meter
- 2 Zeroable partial energy meter
- 3 Green LED: power ON
- 4 Red LED: energy consumption  
Each flash = 1/4 kWh
- 5 Yellow LED: connection error
- 6 Programming buttons

### DIMENSIONS (mm)

#### Front view

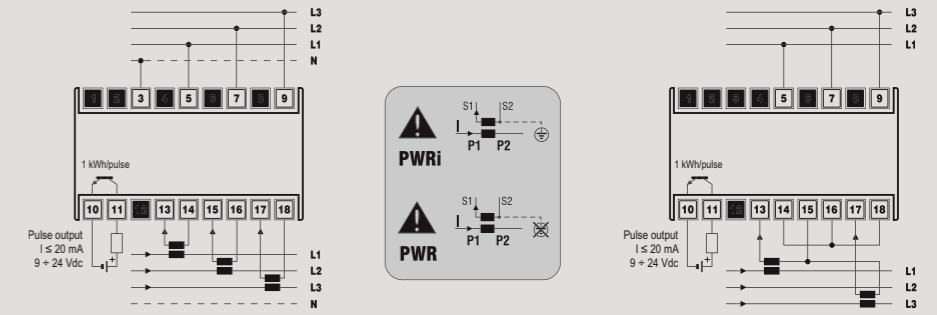


#### Side view



### CONNECTION DIAGRAM

#### Diagram



Connection with 3 CT (PWR/PWRi) WITH or WITHOUT neutral (3 or 4 wires)

Connection with 2 CT (PWRi only) WITHOUT neutral (3 wires)

## MEASUREMENT AND CONTROL

### THREE-PHASE METERS WITH CT CONNECTION

- Power supply: 3x230 phase-neutral (400 phase-phase) V AC (-15% ÷ +10%)
- Optoisolated pulse output
- Static meter to view the consumption of active energy, with amperometric connection through CT x/5A
- Possibility of connection in three-phase and three-phase + N systems
- Container 4 DIN modules
- Pulse output for PC view of the consumed energy, through specific software and relevant concentrator module
- PWRi version with electrically insulated amperometric input (the CT secondary circuit can be earthed)
- 7+5 digits LCD display
- CT setting from 5/5 A to 1000/5 A with step 5 A

Note: when connecting the instrument, the transformation ratio of the CT, must correspond exactly to the ratio described above, selectable on the instrument



### TECHNICAL INFORMATION

#### GENERAL CHARACTERISTICS

|                    |                    |                        |
|--------------------|--------------------|------------------------|
| Power supply       | V AC               | 3x230 (400)            |
| Frequency          | Hz                 | 50 / 60                |
| LCD numerator      |                    | 7 + 5 digits           |
| Reading resolution | kWh                | 1                      |
| Precision          | Active energy      | Class 2 (EN 62053-21)  |
| Absorption         | Voltmetric circuit | VA <2.5                |
|                    | Amperom. circuit   | VA <2.5                |
| Nominal current    | A                  | 5                      |
| Maximum current    | A                  | 6                      |
| Protection degree  |                    | IP20 / 21 on the front |

|                           |                |                |
|---------------------------|----------------|----------------|
| Minimum starting current  | mA             | <15            |
| Optoisolated pulse output | Pulse rate     | kWh 1          |
|                           | Pulse duration | ms 100         |
|                           | Pulse voltage  | V DC 9 ÷ 24    |
|                           | Output current | mA <20         |
| Operating temperature     | °C             | -10 ÷ +45      |
| Storage temperature       | °C             | -25 ÷ +70      |
| Humidity                  |                | 10 ÷ 90%       |
|                           |                | non condensing |
| Container                 |                | 4 DIN modules  |

| Code     | Model            | Description   | Dimensions    |
|----------|------------------|---|---------------|
| VE119400 | Energy-400D PWR  | Three-phase active energy meter with pulse output                           | 4 DIN modules |
| VE120200 | Energy-400D PWRi | Three-phase active energy meter with insulated amp. inputs and pulse output | 4 DIN modules |

### REFERENCE STANDARDS

Compliance with Community Directives: 2014/35/EU (LVD) and 2014/30/EU (EMCD) is declared with reference to the following Standards: EN 61010-1 • EN 61000-6-2 / EN 61000-6-4

