

Technical data sheet

Medium and fine protection FRD for two-core systems

48 V

Item no. 5098522



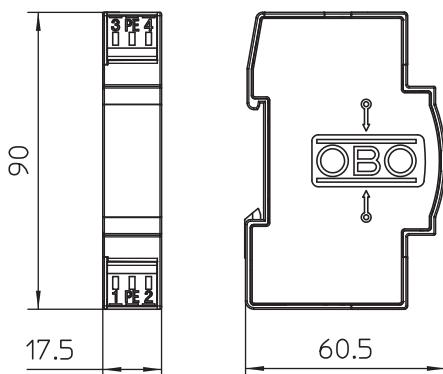
Surge protection for use in measurement and control technology

- Medium and fine protection
- Standard design for double core systems
- Two-stage protection circuit
- With installation-friendly, screwless connection terminals
- In space-saving 17.5 mm grid
- With ohmic decoupling in the longitudinal branch

Application: Universal use on any 35 mm DIN profile rail in every commercially available distributor housing.



Dimensions



Master data

Item no.	5098522
Type	FRD 48
Description 1	Lightning barrier
Description 2	with decoupling resistance
Dimension	48V AC
Smallest sales unit (VG)	1,00 Piece
Weight	5,10 kg/100 pc.

Technical data sheet

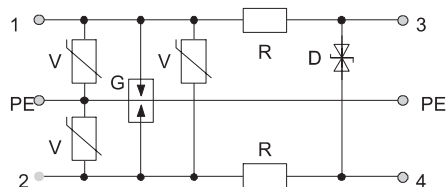
Medium and fine protection FRD for two-core systems

48 V

Item no. 5098522



Technical data



Arrestor monitoring	<input type="checkbox"/>
Category	Type 1+2+3 / D1+C2+C1
SPD to IEC 61643-21	Class I+II+III / D1+C2+C1
Connection cross-section, flexible	0,14 - 2,50 mm ²
Connection cross-section, multi-wire	0,14 - 2,50 mm ²
Connection cross-section, rigid	0,14 - 2,50 mm ²
Number of poles	2,00
Insertion loss	3 dB @ 2 MHz dB
Earthing via:	Terminal
Explosion-tested version	<input type="checkbox"/>
Telecommunications contact	<input type="checkbox"/>
Total discharge current (8/20)	10 kA
Total discharge current (10/350)	D1: 3 kA
Frequency range	0 - 2 MHz
Frequency range	0,00 - 2,00 MHz
Cut-off frequency	2,00 MHz
Maximum continuous voltage AC	37,00 V
Maximum continuous voltage DC	53,00 V
Insulation resistance	>10 MΩ
Impulse discharge current (10/350)	1,50 kA
Nominal discharge current (8/20 μs)	5,00 kA
Capacity (wire-wire)	<10 nF
Capacity (wire-earth)	<1 nF
Lightning protection zone LPZ	0→3
Nominal voltage	48,00 V
Rated current	0,20 A
Nominal load current AC	0,14 A
Nominal load current DC	0,20 A
Installation type	DIN rail 35 mm
Testing standard	IEC 61643-21
Shielding connection available	No
Protection rating	IP20
Protection level wire-wire	<140 V
Protection level wire-earth	<600 V
Series resistance per wire	15 Ω ± 10 %
Connection system	Terminal
Impulse durability wire-wire	C2: 5 kV / 2,5 kA (8/20μs)
Impulse durability wire-earth	C2: 10 kV / 5 kA (8/20μs)
Temperature range	-40+80 °C
Division unit TE (17.5 mm)	1
Approvals	UL