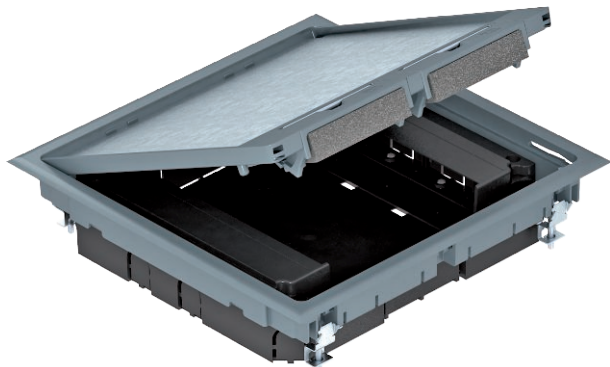


# Technical data sheet

Service outlet, square, for screed height 55 mm

Item no. 7405037



GES9 service outlet with a fixed construction height of 55 mm for use in installation trunking systems in dry rooms with dry-care floors in interior areas. With two installation housings for vertical mounting of Modul 45 devices and four strain reliefs. Two installation frames are required to mount Modul 45 devices.

The data modules are mounted using a maximum of two optional MPMT45 mounting plates. The service outlet is equipped with universal fastening brackets.

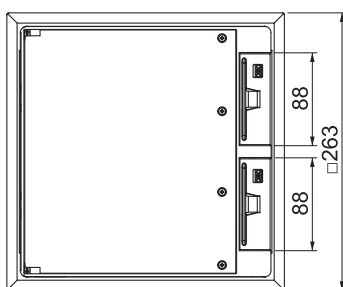
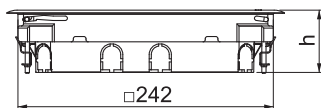


PA Polyamide

## Master data

Item no.	7405037
Type	GES9 55U V 7011
Description 1	Service outlet
Description 2	for duct mounting
Dimension	263x263x59
Colour	Iron grey
RAL number	7011
Material	Polyamide
Material symbol	PA
Smallest sales unit (VG)	1,00 Piece
Weight	206,70 kg/100 pc.

## Technical data



Number of installable devices	8,00
Floor covering thickness	5,00 mm
Floor covering protection frame	<input checked="" type="checkbox"/>
Floor care	Dry
Version for	Square
Seal installation option	<input type="checkbox"/>
Installation depth	55,00 mm
Screed height	55 mm
Device support to accept mounting boxes	<input type="checkbox"/>
Suitable for wet care	<input type="checkbox"/>
Suitable for screed-flush closed underfloor ducts	<input checked="" type="checkbox"/>
Suitable for screed-covered underfloor ducts	<input checked="" type="checkbox"/>
Suitable for raised floor installation	<input checked="" type="checkbox"/>
Suitable for cavity floor installation	<input checked="" type="checkbox"/>
Suitable for underfloor ducts	<input checked="" type="checkbox"/>

# Technical data sheet

Service outlet, square, for screed height 55 mm

Item no. 7405037



## Technical data

With floor covering recess	<input type="checkbox"/>
Nominal size for device installation units	9
Frame version	Carpet protection frame
Schwerlastausführung	<input type="checkbox"/>