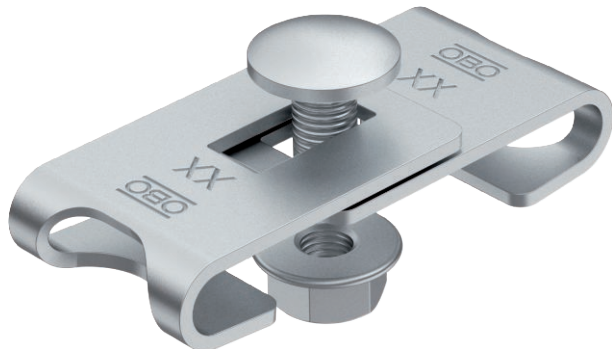


# Technical data sheet

## GEV 36 corner connector

Item no. 6016715



Corner connector for the creation of mesh cable tray bend elements.



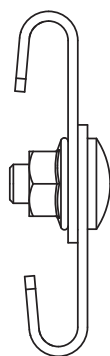
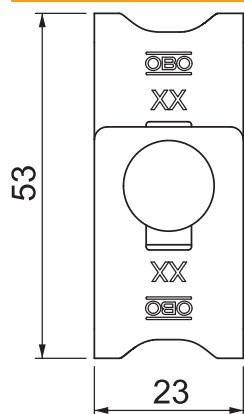
<b>St</b>	Steel
<b>G</b>	Electrogalvanised

Additional product text, instruction  
Including FRS M6 x 12 bolt with flange nut.

### Master data

Item no.	6016715
Type	GEV 36 G
Description 1	Corner connector
Material	Steel
Material symbol	St
Surface	Electrogalvanised
Surface to DIN	DIN EN 12329
Surface symbol	G
Smallest sales unit (VG)	20,00 Piece
Weight	3,04 kg/100 pc.

### Technical data



Length	55,00 mm
Width	23,00 mm
Dimension	42-54 x 23 mm
Version	Corner connector
Suitable for cable tray	<input type="checkbox"/>
Suitable for mesh cable tray	<input checked="" type="checkbox"/>
Suitable for cable ladder	<input type="checkbox"/>
Suitable for maintaining electrical function	<input type="checkbox"/>
Suitable for mesh cable tray wire	3,90 - 4,90 mm
Rustproof steel, pickled	<input type="checkbox"/>
Connection type	Screw connector