

Technical data sheet

GKS 34 hold-down clamp

Item no. 6016855



Clamp for fixing mesh cable trays to wall or support brackets.



St	Steel
G	Electrogalvanised

Additional product text, instruction
Including FRS M6 x 20 bolt with combination nut.

Master data

Item no.	6016855
Type	GKS 34 G
Description 1	Hold-down clamp
Description 2	for mesh cable tray
Material	Steel
Material symbol	St
Surface	Electrogalvanised
Surface to DIN	DIN EN 12329
Surface symbol	G
Smallest sales unit (VG)	20,00 Piece
Weight	1,46 kg/100 pc.

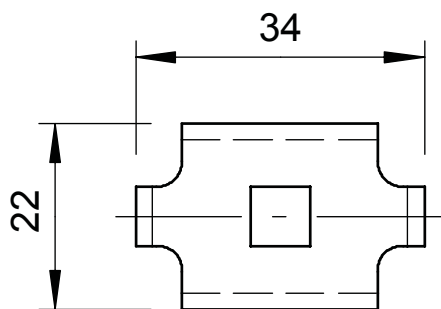
Technical data sheet

GKS 34 hold-down clamp

Item no. 6016855



Technical data



Suitable for cable tray	<input type="checkbox"/>
Suitable for mesh cable tray	<input checked="" type="checkbox"/>
Suitable for cable ladder	<input type="checkbox"/>
Rustproof steel, pickled	<input type="checkbox"/>
Connection type	Other