

Technical data sheet

GKS 34 hold-down clamp

Item no. 6016839



Hold-down clamp for fixing mesh cable trays to wall or support brackets.



A2	Stainless steel, rustproof 1.4301
2B	Bright, reworked

Additional product text, instruction	Including FRS M6 x 20 bolt with nut-and-washer assembly.
Product text, scope of delivery	Including FRS M6 x 20 screw with nut and washer.

Master data

Item no.	6016839
Type	GKS 34 A2
Description 1	Hold-down clamp
Description 2	for mesh cable tray
Material	Stainless steel, material no. 1.4301
Material symbol	A2
Surface	Bright, reworked
Surface symbol	2B
Smallest sales unit (VG)	20,00 Piece
Weight	2,00 kg/100 pc.

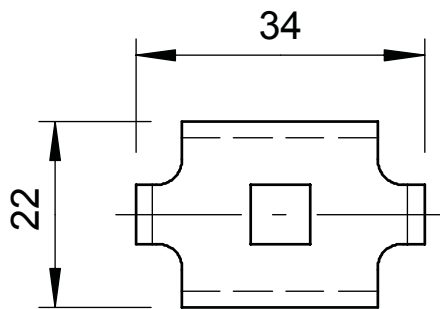
Technical data sheet

GKS 34 hold-down clamp

Item no. 6016839



Technical data



Dimension	34 x 22 mm
Suitable for cable tray	<input type="checkbox"/>
Suitable for mesh cable tray	<input checked="" type="checkbox"/>
Suitable for cable ladder	<input type="checkbox"/>
Rustproof steel, pickled	<input type="checkbox"/>
Connection type	Other