

High-power stud terminal, Stud connection, Mounting type: Mounting rail TS 35/7.5, Rated cross-section: 70 mm², Width: 32 mm, Colour: Beige

Business data

Article number	<u>17035.2</u>
Article name	HSKG 70/M8/B/B BG
GTIN (EAN)	4044211186593
Packaging unit	10
Quantity unit	PC
Weight per piece (not including packaging)	146.7 g
Weight per piece (including packaging)	156.2 g
Unit of weight	G
Customs number	85369010
Country of origin	DE
Product description	High-power stud terminal
Colour	Beige

Technical data

Dimensions

Length	132 mm
Length with TW/ADH	180 mm
Width	32 mm
Height TS 35/7.5	61 mm
Height TS 35/7.5 with TW/ADH	70 mm

Ratings

Rated voltage	1000 V
Rated current	192 A
Rated cross-section	70 mm ²
Rated impulse voltage	8 kV
Overvoltage category	III
Contamination degree	3
Maximum power dissipation for nominal condition	6.14 W

Connection data

Connection principle	Stud connection
Connection position	Top
Connections	2
Number of terminals per level	2
Number of levels	1
Wire cross-section AWG, min.	14
Wire cross-section AWG, max.	3/0
Bolt head	Hexagon
Bolt thread	M 8
Tightening torque, min.	6 Nm
Tightening torque, max.	12 Nm
Contact wire range	≤ 95 mm ²

Materials

Insulation housing	Polyamide 6.6
Flammability class UL 94	V-0
Working temperature, min.	-40 °C
Working temperature, max.	120 °C

Technical data

Further technical data

Mounting type	Mounting rail TS 35/7,5
Spanner width (AF)	13 mm
Number of cross-connection channels	2
DIN 46234 / 1 cable lug per side, min.	2.5 mm ²
DIN 46234 / 1 cable lug per side, max.	95 mm ²
DIN 46234 / 2 cable lugs per side, min.	2.5 mm ²
DIN 46234 / 2 cable lugs per side, max.	70 mm ²
DIN 46235: 1 cable lug per side, max.	70 mm ²
DIN 46235: 1 cable lug per side, min.	16 mm ²
DIN 46235: 2 cable lugs per side, min.	16 mm ²
DIN 46235: 2 cable lugs per side, max.	70 mm ²

Environmental Product Compliance

REACH Conform	yes
REACH Reference date	2023-06-14
REACH Candidate Substance Note	No
RoHS Conform	yes

Approvals

CSA approval

CSA approval	C22.2 No 158
CSA approval granted	yes
CSA Usegroup C: rated voltage	1000 V
CSA Usegroup C: rated current	175 A
CSA Usegroup D: rated voltage	1000 V
CSA Usegroup D: rated current	175 A
CSA wire cross-section AWG, min.	14
CSA wire cross-section AWG, max.	3/0
CSA torque, max.	12 Nm
CSA torque, min.	6 Nm

CSAus approval

CSAus approval	UL 1059
CSAus approval granted	yes
CSAus Usegroup C: rated voltage	1000 V
CSAus Usegroup C: rated current	175 A
CSAus Usegroup D: rated voltage	1000 V
CSAus Usegroup D: rated current	175 A
CSAus wire cross-section AWG, min.	14
CSAus wire cross-section AWG, max.	3/0
CSAus torque, min.	6 Nm
CSAus torque, max.	12 Nm

Approvals

cUL Recognized

cUL approval	C22.2 No 158
cUL Usegroup B: rated voltage	1000 V
cUL Usegroup B: rated current	175 A
cUL Usegroup C: rated voltage	1000 V
cUL Usegroup C: rated current	175 A
cUL Usegroup D: rated voltage	1000 V
cUL Usegroup D: rated current	175 A
cUL Usegroup E: rated voltage	1000 V
cUL Usegroup E: rated current	175 A
cUL wire cross-section AWG, min.	14
cUL wire cross-section AWG, max.	3/0
cUL torque, min.	6 Nm
cUL torque, max.	12 Nm
cUL wire material	Cu
cUL Recognized	1

KEMA KEUR approval

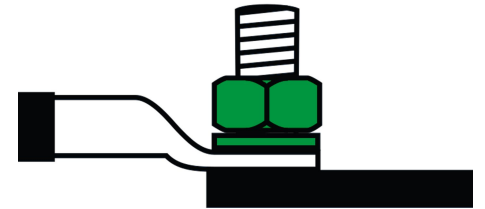
KEMA KEUR approval	EN 60947-7-1:2009
KEMA KEUR approval granted	yes
KEMA rated voltage	1000 V
KEMA rated current	192 A
KEMA rated impulse voltage	8 kV
KEMA wire cross-section, min.	2.5 mm ²
KEMA wire cross-section, max.	95 mm ²
KEMA torque, min.	6 Nm
KEMA torque, max.	12 Nm

Approvals

UL Recognized

UL approval	UL 1059
UL Usegroup B: rated voltage	1000 V
UL Usegroup B: rated current (only for factory wiring)	175 A
UL Usegroup C: rated voltage	1000 V
UL Usegroup C: rated current (only for factory wiring)	175 A
UL Usegroup D: rated voltage	1000 V
UL Usegroup D: rated current	175 A
UL Usegroup E: rated voltage	1000 V
UL Usegroup E: rated current	175 A
UL wire cross-section AWG, min.	14
UL wire cross-section AWG, max.	3/0
UL torque, min.	53.1 Lb In.
UL torque, max.	106.2 Lb In.
UL wire material	Cu
UL factory wiring	1
UL field wiring	1
UL Recognized	1

Media



Accessories

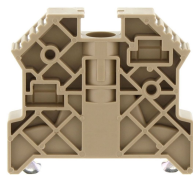
Protective hood



Cover profile, Length: 86.8 mm, Width: 31.9 mm, Colour: Yellow

Article number	Article name	GTIN (EAN)	Packaging unit
<u>17268.8</u>	ADH 70 YE	4044211186609	10

End stop



End stop, Mounting type: Mounting rail TS 35/7.5, Width: 9.5 mm, Colour: Beige

Article number	Article name	GTIN (EAN)	Packaging unit
<u>2828.0</u>	ES 35/K/ST BG	4044211055547	50

Quick marking



Terminal marker / Pocket Maxicard, Length: 5 mm, Width: 6 mm, Colour: White

Article number	Article name	GTIN (EAN)	Packaging unit
<u>4702.7</u>	PMC SB 6/50 WH	4044211089986	500 ST