



Inner hex key with bare blade

Business data

Article number	<u>2818.0</u>
Article name	ISKS 5
GTIN (EAN)	4044211055448
Design	Inner hex (Allen)
Packaging unit	1
Quantity unit	PC
Weight per piece (not including packaging)	56.6 g
Weight per piece (including packaging)	56.61 g
Unit of weight	G
Customs number	82041100
Country of origin	DE
Product description	Allen key socket wrench

Data sheet

2818.0 ISKS 5

Technical data

Dimensions

Length	130 mm
--------	--------

Blade length	100 mm
--------------	--------

Environmental Product Compliance

REACH Conform	yes
---------------	-----

REACH Reference date	2023-06-14
----------------------	------------

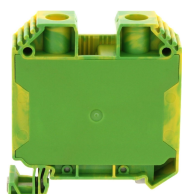
REACH Candidate Substance Note	No
--------------------------------	----

RoHS Conform	yes
--------------	-----

Media

Accessories

##INVERSE##CONTA-CONNECT



Protective earth terminal, Screw connection, Mounting type: Mounting rail TS 35/7.5, Rated cross-section: 35 mm², Width: 16.1 mm, Colour: Green-yellow

Article number	Article name	GTIN (EAN)	Packaging unit
<u>17147.2</u>	SSL 35/2A/IS GNYE	4044211186678	20 ST



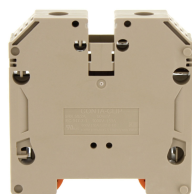
Feed-through terminal, Screw connection, Mounting type: Mounting rail TS 35/7.5, Rated cross-section: 35 mm², Width: 16.1 mm, Colour: Beige

Article number	Article name	GTIN (EAN)	Packaging unit
<u>17142.2</u>	SRK 35/2A/IS BG	4044211186647	20



Screw-distributor block, Screw connection, Mounting type: Mounting rail TS 35/7.5 and mounting surface, Rated cross-section of input: 120 mm², Rated cross-section of output: 10, 16 and 35 mm², Colour: Light grey

Article number	Article name	GTIN (EAN)	Packaging unit
<u>1743.0</u>	SVB 250 LG	4044211143503	1 ST



Feed-through terminal, Screw connection, Mounting type: Mounting rail TS 35/7.5, Rated cross-section: 50 mm², Width: 18.5 mm, Colour: Beige

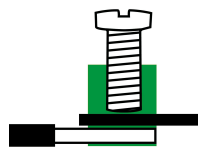
Article number	Article name	GTIN (EAN)	Packaging unit
<u>17156.2</u>	SRK 50/2A BG	4044211186715	10



Feed-through terminal, Screw connection, Mounting type: Mounting rail TS 35/7.5 and TS 32, Rated cross-section: 240 mm², Width: 36 mm, Colour: Black-yellow

Article number	Article name	GTIN (EAN)	Packaging unit
<u>1570.2</u>	RK 240/PE BKYE	4044211047412	5 ST

##INVERSE##CONTA-CONNECT



Feed-through terminal for direct mount, Screw connection, Mounting type: Mounting surface, Rated cross-section: 50 mm², Width: 20 mm, Colour: Beige

Article number	Article name	GTIN (EAN)	Packaging unit
<u>1582.2</u>	RK 50-D BG	4044211047702	10



Feed-through terminal, Screw connection, Mounting type: Mounting rail TS 35/7.5 and TS 32, Rated cross-section: 150 mm², Width: 31 mm, Colour: Black-yellow

Article number	Article name	GTIN (EAN)	Packaging unit
<u>1569.2</u>	RK 150/PE BKYE	4044211047405	5 ST



Ex feed-through terminal ATEX-certified, Screw connection, Mounting type: Mounting rail TS 35/7.5 and TS 32, Rated cross-section: 50 mm², Width: 20 mm, Colour: Beige

Article number	Article name	GTIN (EAN)	Packaging unit
<u>1473.2</u>	RK 50 Ex BG	4044211107901	10



Feed-through terminal, Screw connection, Mounting type: Mounting rail TS 35/7.5 and TS 32, Rated cross-section: 50 mm², Width: 20 mm, Colour: Beige

Article number	Article name	GTIN (EAN)	Packaging unit
<u>1120.2</u>	RK 50 BG	4044211018702	10



Ex feed-through terminal ATEX-certified, Screw connection, Mounting type: Mounting rail TS 35/7.5 and TS 32, Rated cross-section: 50 mm², Width: 20 mm, Colour: Beige

Article number	Article name	GTIN (EAN)	Packaging unit
<u>1473.2</u>	RK 50 Ex BG	4044211107901	10



Ex feed-through terminal ATEX-certified, Screw connection, Mounting type: Mounting rail TS 35/7.5 and TS 32, Rated cross-section: 50 mm², Width: 20 mm, Colour: Beige

Article number	Article name	GTIN (EAN)	Packaging unit
<u>1473.2</u>	RK 50 Ex BG	4044211107901	10