



Seal, Mounting type: Plug in, Length x width: 20.3 mm, Max. cable diameter: 15 mm, IP 66, Colour: Black

RAL: 9005

Kaufmännische Daten

Artikelnummer	<u>28608.4</u>
Artikelbezeichnung	KDS-DE 14-15 BK
GTIN (EAN)	4044211219314
Packaging unit	10
Quantity unit	PC
Weight per piece (not including packaging)	3.8 g
Weight per piece (including packaging)	4.2 g
Unit of weight	G
Customs number	39259020
Country of origin	DE
Product description	Sealing Element
Colour	Black

Technische Daten

Dimensions

Length	20.3 mm
Width	20.3 mm
Height	17.7 mm

Materials

Material	TPE
Flammability class UL 94	HB
Working temperature, min.	-40 °C
Working temperature, max.	120 °C
Halogen-free	✓
Silicone-free	✓
UV-resistant	✓

Further technical data

Mounting type	Plug in
Degree of protection	IP66
Strain relief	✓
Cable diameter, min.	14 mm
Cable diameter, max.	15 mm
NEMA Type	1, 12, 4x (indoor use only)
Number of wires	1

Environmental Product Compliance

REACH Conform	yes
REACH Reference date	2023-06-14
REACH Candidate Substance Note	No
RoHS Conform	yes

Zulassungen

Standards and regulations

Standards / specifications	Strain relief complying with DIN EN 62444
----------------------------	---

cUL Recognized

cUL approval	C22.2 No. 14-18
--------------	-----------------

cUL File Number	E489821
-----------------	---------

cUL Recognized	1
----------------	---

UL Recognized

UL approval	UL 508A
-------------	---------

UL File Number	E489821
----------------	---------

UL Recognized	1
---------------	---

UL Type Rating	1, 12, 4x (indoor use only)
----------------	-----------------------------

German Lloyd approval

DNV GL Certificate number	TAE00003V7
---------------------------	------------

DNV GL Location Classes	Temperature: -40°C to 120°C, Humidity: B, Vibration: B, Ingress protection: IP66
-------------------------	--

DNV GL approval granted	1
-------------------------	---

Medien



Zubehör

Inlays



Cable entry, Inlay, Mounting type: Plug in, IP 66, Colour: Black

Artikelnummer	Artikelbezeichnung	GTIN (EAN)	VPE
<u>28516.4</u>	KDS-Inlay 1 BK	4044211210847	5 ST



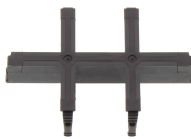
Cable entry, Inlay, Mounting type: Plug in, IP 66, Colour: Black

Artikelnummer	Artikelbezeichnung	GTIN (EAN)	VPE
<u>28517.4</u>	KDS-Inlay 2 BK	4044211210854	5 ST



Cable entry, Inlay, Mounting type: Plug in, IP 66, Colour: Black

Artikelnummer	Artikelbezeichnung	GTIN (EAN)	VPE
<u>28518.4</u>	KDS-Inlay 4 BK	4044211210861	5 ST



Cable entry, Inlay, Mounting type: Plug in, IP 66, Colour: Black

Artikelnummer	Artikelbezeichnung	GTIN (EAN)	VPE
<u>28519.4</u>	KDS-Inlay 6 BK	4044211210014	5 ST

Screw frame



Cable entry with foamed-in seal, Mounting type: Screws, Length: 153 mm, Width: 70 mm, IP 66, Colour: Black

Artikelnummer	Artikelbezeichnung	GTIN (EAN)	VPE
<u>28504.4</u>	KDS-SR 10/24 BK	4044211210809	1 ST



Cable entry with foamed-in seal, Mounting type: Screws, Length: 106 mm, Width: 70 mm, IP 66, Colour: Black

Artikelnummer	Artikelbezeichnung	GTIN (EAN)	VPE
<u>28500.4</u>	KDS-SR 6/10 BK	4044211210021	1 ST

28608.4 KDS-DE 14-15 BK

Screw frame



Cable entry with foamed-in seal, Mounting type: Screws, Length: 126 mm, Width: 70 mm, IP 66, Colour: Black

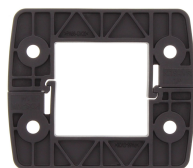
Artikelnummer	Artikelbezeichnung	GTIN (EAN)	VPE
<u>28502.4</u>	KDS-SR 8/16 BK	4044211210786	1 ST



Cable entry with foamed-in seal, Mounting type: Screws, Length: 81 mm, Width: 70 mm, IP 66, Colour: Black

Artikelnummer	Artikelbezeichnung	GTIN (EAN)	VPE
<u>28506.4</u>	KDS-SR 1-4 BK	4044211210823	1 ST

Locking frame



Inner locking frame, Length: 80 mm, Height: 11.5 mm, Colour: Black

Artikelnummer	Artikelbezeichnung	GTIN (EAN)	VPE
<u>28507.4</u>	KDS-IVR 1-4 BK	4044211210830	10 ST



Inner locking frame, Length: 105 mm, Height: 11.5 mm, Colour: Black

Artikelnummer	Artikelbezeichnung	GTIN (EAN)	VPE
<u>28501.4</u>	KDS-IVR 6/10 BK	4044211210779	10 ST



Inner locking frame, Length: 125 mm, Height: 11.5 mm, Colour: Black

Artikelnummer	Artikelbezeichnung	GTIN (EAN)	VPE
<u>28503.4</u>	KDS-IVR 8/16 BK	4044211210793	10 ST



Inner locking frame, Length: 152 mm, Height: 11.5 mm, Colour: Black

Artikelnummer	Artikelbezeichnung	GTIN (EAN)	VPE
<u>28505.4</u>	KDS-IVR 10/24 BK	4044211210816	10 ST

Actuating tool

28608.4 KDS-DE 14-15 BK



Using the KDS BW1 actuating tool, the seals can be conveniently mounted in and dismantled from the frame. The ergonomic grip and the special shape enable simple and precise installations, especially for cabling applications in confined spaces., Material: Polyamide

Artikelnummer	Artikelbezeichnung	GTIN (EAN)	VPE
28622.0	KDS BW 1	4044211216597	1 ST

##INVERSE##CONTA-CABLE



Split cable gland including counter nut, Thread type: metric, Material: PA 6.6, Protection: IP 66, Colour: Black

Artikelnummer	Artikelbezeichnung	GTIN (EAN)	VPE
28612.4	KDS-KV M32 BK	4044211208950	10 ST



Cable entry flange plate with foamed-in frame gasket, Mounting type: Screw, Length: 165 mm, Width: 123 mm, IP66, Colour: Black

Artikelnummer	Artikelbezeichnung	GTIN (EAN)	VPE
28660.4	KDS-FP 2x10/24 BK	4044211220358	1 ST



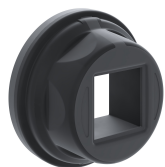
Cable entry flange plate with foamed-in frame gasket, Mounting type: Screw, Length: 165 mm, Width: 174 mm, IP66, Colour: Black

Artikelnummer	Artikelbezeichnung	GTIN (EAN)	VPE
28661.4	KDS-FP 3x10/24 BK	4044211220365	1 ST



Cable entry flange plate with foamed-in frame gasket, Mounting type: Screw, Length: 165 mm, Width: 174 mm, IP66, Colour: Black

Artikelnummer	Artikelbezeichnung	GTIN (EAN)	VPE
28661.4	KDS-FP 3x10/24 BK	4044211220365	1 ST



Round cable entry, Material: polyamide PA 6.6, glass-fibre reinforced | TPE, Colour: Black

Artikelnummer	Artikelbezeichnung	GTIN (EAN)	VPE
28770.4	KDS-R 20-32 BK	4044211234508	5 ST

##INVERSE##CONTA-CABLE



Cable entry with moulded-in seal, Mounting type: Screws, Length: 120 mm, Width: 39 mm, IP 66, Colour: Black

Artikelnummer	Artikelbezeichnung	GTIN (EAN)	VPE
<u>28706.4</u>	KDS-SR-FB3/D BK	4044211225537	10 ST



Cable entry with moulded-in seal, Mounting type: Screws, Length: 120 mm, Width: 39 mm, IP 66, Colour: Black

Artikelnummer	Artikelbezeichnung	GTIN (EAN)	VPE
<u>28704.4</u>	KDS-SR-FB3/B BK	4044211225513	10 ST



Thread and locking adapter, Material: Polyamide PA 6.6, glass-fibre reinforced, Colour: Black

Artikelnummer	Artikelbezeichnung	GTIN (EAN)	VPE
<u>28777.4</u>	KDS-RGA M63 BK	4044211234577	5 ST



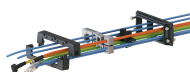
Cable entry with moulded-in seal, Mounting type: Screws, Length: 147 mm, Width: 39 mm, IP 66, Colour: Black

Artikelnummer	Artikelbezeichnung	GTIN (EAN)	VPE
<u>28709.4</u>	KDS-SR-FB4/C BK	4044211225568	10 ST



Cable entry with moulded-in seal, Mounting type: Screws, Length: 147 mm, Width: 39 mm, IP 66, Colour: Black

Artikelnummer	Artikelbezeichnung	GTIN (EAN)	VPE
<u>28708.4</u>	KDS-SR-FB4/B BK	4044211225551	10 ST



Cable entry with TPE seal, Mounting type: Screws, Length: 81 mm, Width: 64 mm, IP 66, Colour: Black

Artikelnummer	Artikelbezeichnung	GTIN (EAN)	VPE
<u>28880.4</u>	KDSI-SR 1-4 BK	4044211243807	1 ST



Cable entry with foamed-in seal, Mounting type: Screws, Length: 126 mm, Width: 70 mm, IP 66, Colour: Black

Artikelnummer	Artikelbezeichnung	GTIN (EAN)	VPE
<u>28502.4</u>	KDS-SR 8/16 BK	4044211210786	1 ST

##INVERSE##CONTA-CABLE



Cable entry set, IP66, Consisting of: 1 x KDSI-SR 1-4 BK, 1 x KDS-Inlay 4 BK

Artikelnummer	Artikelbezeichnung	GTIN (EAN)	VPE
<u>28890.4</u>	KDSI-SET 1-4 BK	4044211242152	1 ST



Cable entry with TPE seal, Mounting type: Screws, Length: 106 mm, Width: 64 mm, IP 66, Colour: Black

Artikelnummer	Artikelbezeichnung	GTIN (EAN)	VPE
<u>28881.4</u>	KDSI-SR 6/10 BK	4044211242084	1 ST



Cable entry with foamed-in seal, Mounting type: Screws, Length: 126 mm, Width: 70 mm, IP 66, Colour: Black

Artikelnummer	Artikelbezeichnung	GTIN (EAN)	VPE
<u>28502.4</u>	KDS-SR 8/16 BK	4044211210786	1 ST



Cable entry set, IP66, Consisting of: 1xKDSI-SR 6/10, 1xKDS-Inlay 2, 1xKDS-Inlay 6

Artikelnummer	Artikelbezeichnung	GTIN (EAN)	VPE
<u>28891.4</u>	KDSI-SET 6/10 BK	4044211242169	1 ST



Cable entry with TPE seal, Mounting type: Screws, Length: 126 mm, Width: 64 mm, IP 66, Colour: Black

Artikelnummer	Artikelbezeichnung	GTIN (EAN)	VPE
<u>28882.4</u>	KDSI-SR 8/16 BK	4044211242091	1 ST



Cable entry set, IP66, Consisting of: 1 x KDSI-SR 1-4 BK, 1 x KDS-Inlay 4 BK

Artikelnummer	Artikelbezeichnung	GTIN (EAN)	VPE
<u>28890.4</u>	KDSI-SET 1-4 BK	4044211242152	1 ST



Cable entry with foamed-in seal, Mounting type: Screws, Length: 106 mm, Width: 70 mm, IP 66, Colour: Black

Artikelnummer	Artikelbezeichnung	GTIN (EAN)	VPE
<u>28500.4</u>	KDS-SR 6/10 BK	4044211210021	1 ST

28608.4 KDS-DE 14-15 BK

##INVERSE##CONTA-CABLE



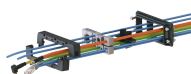
Cable entry with TPE seal, Mounting type: Screws, Length: 153 mm, Width: 64 mm, IP66, Colour: Black

Artikelnummer	Artikelbezeichnung	GTIN (EAN)	VPE
<u>28883.4</u>	KDSI-SR 10/24 BK	4044211242107	1 ST



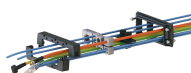
Cable entry set, IP66, Consisting of: 1xKDSI-SR 8/16, 2xKDS-Inlay 4

Artikelnummer	Artikelbezeichnung	GTIN (EAN)	VPE
<u>28892.4</u>	KDSI-SET 8/16 BK	4044211242176	1 ST



Cable entry with TPE seal, Mounting type: Screws, Length: 106 mm, Width: 64 mm, IP 66, Colour: Black

Artikelnummer	Artikelbezeichnung	GTIN (EAN)	VPE
<u>28881.4</u>	KDSI-SR 6/10 BK	4044211242084	1 ST



Cable entry with TPE seal, Mounting type: Screws, Length: 106 mm, Width: 64 mm, IP 66, Colour: Black

Artikelnummer	Artikelbezeichnung	GTIN (EAN)	VPE
<u>28881.4</u>	KDSI-SR 6/10 BK	4044211242084	1 ST



Cable entry set, IP66, Consisting of: 1xKDSI-SR 10/24, each 1xKDS-Inlay 2,4,6

Artikelnummer	Artikelbezeichnung	GTIN (EAN)	VPE
<u>28893.4</u>	KDSI-SET 10/24 BK	4044211242183	1 ST



Cable entry set, IP66, Consisting of: 1xKDSI-SR 8/16, 2xKDS-Inlay 4

Artikelnummer	Artikelbezeichnung	GTIN (EAN)	VPE
<u>28892.4</u>	KDSI-SET 8/16 BK	4044211242176	1 ST



Cable entry with TPE seal, Mounting type: Screws, Length: 106 mm, Width: 64 mm, IP 66, Colour: Black

Artikelnummer	Artikelbezeichnung	GTIN (EAN)	VPE
<u>28881.4</u>	KDSI-SR 6/10 BK	4044211242084	1 ST

28608.4 KDS-DE 14-15 BK

##INVERSE##CONTA-CABLE



Cable entry with TPE seal, Mounting type: Screws, Length: 126 mm, Width: 64 mm, IP66, Colour: Black

Artikelnummer	Artikelbezeichnung	GTIN (EAN)	VPE
<u>28882.4</u>	KDSI-SR 8/16 BK	4044211242091	1 ST



Cable entry with TPE seal, Mounting type: Screws, Length: 153 mm, Width: 64 mm, IP 66, Colour: Black

Artikelnummer	Artikelbezeichnung	GTIN (EAN)	VPE
<u>28883.4</u>	KDSI-SR 10/24 BK	4044211242107	1 ST



Cable entry set, IP66, Consisting of: 1 x KDSI-SR 1-4 BK, 1 x KDS-Inlay 4 BK

Artikelnummer	Artikelbezeichnung	GTIN (EAN)	VPE
<u>28890.4</u>	KDSI-SET 1-4 BK	4044211242152	1 ST



Cable entry set, IP66, Consisting of: 1xKDSI-SR 6/10, 1xKDS-Inlay 2, 1xKDS-Inlay 6

Artikelnummer	Artikelbezeichnung	GTIN (EAN)	VPE
<u>28891.4</u>	KDSI-SET 6/10 BK	4044211242169	1 ST



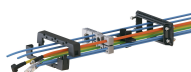
Cable entry set, IP66, Consisting of: 1xKDSI-SR 8/16, 2xKDS-Inlay 4

Artikelnummer	Artikelbezeichnung	GTIN (EAN)	VPE
<u>28892.4</u>	KDSI-SET 8/16 BK	4044211242176	1 ST



Cable entry set, IP66, Consisting of: 1xKDSI-SR 10/24, each 1xKDS-Inlay 2,4,6

Artikelnummer	Artikelbezeichnung	GTIN (EAN)	VPE
<u>28893.4</u>	KDSI-SET 10/24 BK	4044211242183	1 ST



Cable entry with TPE seal, Mounting type: Screws, Length: 106 mm, Width: 64 mm, IP 66, Colour: Black

Artikelnummer	Artikelbezeichnung	GTIN (EAN)	VPE
<u>28881.4</u>	KDSI-SR 6/10 BK	4044211242084	1 ST