



Inner lock, Mounting type: Plug in

Business data

Article number	<u>28664.3</u>
Article name	KDS-FP-IVR OG
GTIN (EAN)	4044211220402
Packaging unit	20
Quantity unit	PC
Weight per piece (not including packaging)	3.3 g
Weight per piece (including packaging)	3.4 g
Unit of weight	G
Customs number	39259020
Country of origin	DE
Product description	Cable Entry
Colour	Orange

Technical data

Dimensions

Length	60 mm
Width	19 mm
Height	27 mm
Installation height	11 mm

Materials

Material	Polyamide 6.6
Glass-fibre reinforced	✓
Flammability class UL 94	V-0
Working temperature, min.	-40 °C
Working temperature, max.	120 °C
Halogen-free	✓
Silicone-free	✓

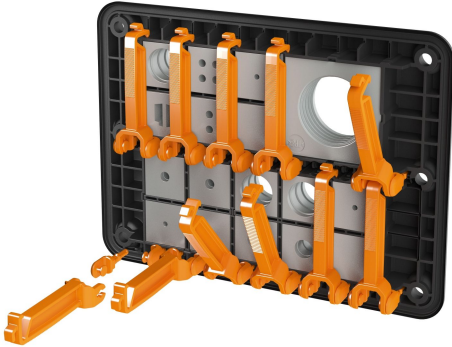
Further technical data

Mounting type	Snap-on
---------------	---------

Environmental Product Compliance

REACH Conform	yes
REACH Reference date	2023-06-14
REACH Candidate Substance Note	No
RoHS Conform	yes

Media



28664.3 KDS-FP-IVR OG

Accessories

##INVERSE##CONTA-CABLE



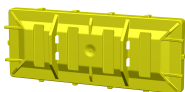
Cable entry flange plate with foamed-in frame gasket, Mounting type: Screw, Length: 165 mm, Width: 123 mm, IP66, Colour: Black

Article number	Article name	GTIN (EAN)	Packaging unit
28660.4	KDS-FP 2x10/24 BK	4044211220358	1 ST



Cable entry flange plate with foamed-in frame gasket, Mounting type: Screw, Length: 165 mm, Width: 174 mm, IP66, Colour: Black

Article number	Article name	GTIN (EAN)	Packaging unit
28661.4	KDS-FP 3x10/24 BK	4044211220365	1 ST



Inner cover for unused openings in the flange plates KDS-FP, Mounting type: plug-in, length: 153 mm, width: 55 mm, height: 11.5 mm, Material: Polyamide 6.6

Article number	Article name	GTIN (EAN)	Packaging unit
28665.8	KDS-FP-AD/UL YE	4044211234034	10 ST