



Cable entry, Inlay, Mounting type: Plug in, IP 66, Colour: Black

RAL: 9005

Kaufmännische Daten

Artikelnummer	28517.4
Artikelbezeichnung	KDS-Inlay 2 BK
GTIN (EAN)	4044211210854
Packaging unit	5
Quantity unit	PC
Weight per piece (not including packaging)	3.9 g
Weight per piece (including packaging)	4.3 g
Unit of weight	G
Customs number	39259020
Country of origin	DE
Product description	Cable Entry
Colour	Black

Technische Daten

Dimensions

Length	25 mm
Width	45 mm
Height	17.7 mm
Installation height	17.7 mm

Materials

Material	Polyamide 6.6
Glass-fibre reinforced	✓
Flammability class UL 94	V-0
Working temperature, min.	-40 °C
Working temperature, max.	120 °C
Sealing material	TPE
Halogen-free	✓
Silicone-free	✓

Further technical data

Mounting type	Plug in
Degree of protection	IP66
NEMA Type	1, 12, 4x (indoor use only)

Environmental Product Compliance

REACH Conform	yes
REACH Reference date	2023-06-14
REACH Candidate Substance Note	No
RoHS Conform	yes

Zulassungen

cUL Recognized

cUL approval	C22.2 No. 14-18
cUL File Number	E489821
cUL Recognized	1

UL Recognized

UL approval	UL 508A
UL File Number	E489821
UL Recognized	1
UL Type Rating	1, 12, 4x (indoor use only)

German Lloyd approval

DNV GL Certificate number	TAE00003V7
DNV GL Location Classes	Temperature: -40°C to 120°C, Humidity: B, Vibration: B, Ingress protection: IP66
DNV GL approval granted	1

Medien



Zubehör

Small Seals



Seal, Mounting type: Plug in, Length x width: 42.8 mm, Max. cable diameter: 20 mm, IP 66, Colour: Black

Artikelnummer	Artikelbezeichnung	GTIN (EAN)	VPE
<u>28540.4</u>	KDS-DEG 19-20 BK	4044211215354	10 ST



Seal dummy, Mounting type: Plug in, Length x width: 42.8 mm, IP 66, Colour: Black

Artikelnummer	Artikelbezeichnung	GTIN (EAN)	VPE
<u>28534.4</u>	KDS-DEG/B BK	4044211215255	10 ST



Seal, Mounting type: Plug in, Length x width: 42.8 mm, Max. cable diameter: 15 mm, IP 66, Colour: Black

Artikelnummer	Artikelbezeichnung	GTIN (EAN)	VPE
<u>28535.4</u>	KDS-DEG 14-15 BK	4044211209995	10 ST



Seal, Mounting type: Plug in, Length x width: 42.8 mm, Max. cable diameter: 16 mm, IP 66, Colour: Black

Artikelnummer	Artikelbezeichnung	GTIN (EAN)	VPE
<u>28536.4</u>	KDS-DEG 15-16 BK	4044211215279	10 ST



Seal, Mounting type: Plug in, Length x width: 42.8 mm, Max. cable diameter: 17 mm, IP 66, Colour: Black

Artikelnummer	Artikelbezeichnung	GTIN (EAN)	VPE
<u>28537.4</u>	KDS-DEG 16-17 BK	4044211215293	10 ST



Seal, Mounting type: Plug in, Length x width: 42.8 mm, Max. cable diameter: 18 mm, IP 66, Colour: Black

Artikelnummer	Artikelbezeichnung	GTIN (EAN)	VPE
<u>28538.4</u>	KDS-DEG 17-18 BK	4044211215316	10 ST

Small Seals



Seal, Mounting type: Plug in, Length x width: 42.8 mm, Max. cable diameter: 24 mm, IP 66, Colour: Black

Artikelnummer	Artikelbezeichnung	GTIN (EAN)	VPE
<u>28544.4</u>	KDS-DEG 23-24 BK	4044211215439	10 ST



Seal, Mounting type: Plug in, Length x width: 42.8 mm, Max. cable diameter: 25 mm, IP 66, Colour: Black

Artikelnummer	Artikelbezeichnung	GTIN (EAN)	VPE
<u>28545.4</u>	KDS-DEG 24-25 BK	4044211215453	10 ST



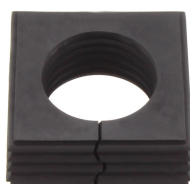
Seal, Mounting type: Plug in, Length x width: 42.8 mm, Max. cable diameter: 26 mm, IP 66, Colour: Black

Artikelnummer	Artikelbezeichnung	GTIN (EAN)	VPE
<u>28546.4</u>	KDS-DEG 25-26 BK	4044211215460	10 ST



Seal, Mounting type: Plug in, Length x width: 42.8 mm, Max. cable diameter: 27 mm, IP 66, Colour: Black

Artikelnummer	Artikelbezeichnung	GTIN (EAN)	VPE
<u>28547.4</u>	KDS-DEG 26-27 BK	4044211215491	10 ST



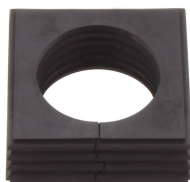
Seal, Mounting type: Plug in, Length x width: 42.8 mm, Max. cable diameter: 28 mm, IP 66, Colour: Black

Artikelnummer	Artikelbezeichnung	GTIN (EAN)	VPE
<u>28548.4</u>	KDS-DEG 27-28 BK	4044211215514	10 ST



Seal, Mounting type: Plug in, Length x width: 42.8 mm, Max. cable diameter: 29 mm, IP 66, Colour: Black

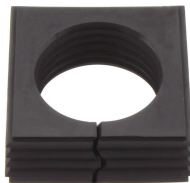
Artikelnummer	Artikelbezeichnung	GTIN (EAN)	VPE
<u>28549.4</u>	KDS-DEG 28-29 BK	4044211215538	10 ST



Seal, Mounting type: Plug in, Length x width: 42.8 mm, Max. cable diameter: 30 mm, IP 66, Colour: Black

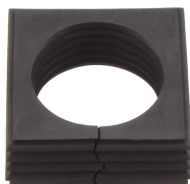
Artikelnummer	Artikelbezeichnung	GTIN (EAN)	VPE
<u>28550.4</u>	KDS-DEG 29-30 BK	4044211215552	10 ST

Small Seals



Seal, Mounting type: Plug in, Length x width: 42.8 mm, Max. cable diameter: 31 mm, IP 66, Colour: Black

Artikelnummer	Artikelbezeichnung	GTIN (EAN)	VPE
<u>28551.4</u>	KDS-DEG 30-31 BK	4044211215576	10 ST



Seal, Mounting type: Plug in, Length x width: 42.8 mm, Max. cable diameter: 32 mm, IP 66, Colour: Black

Artikelnummer	Artikelbezeichnung	GTIN (EAN)	VPE
<u>28552.4</u>	KDS-DEG 31-32 BK	4044211215590	10 ST



Seal, Mounting type: Plug in, Length x width: 42.8 mm, Max. cable diameter: 23 mm, IP 66, Colour: Black

Artikelnummer	Artikelbezeichnung	GTIN (EAN)	VPE
<u>28543.4</u>	KDS-DEG 22-23 BK	4044211215415	10 ST



Seal, Mounting type: Plug in, Length x width: 42.8 mm, Max. cable diameter: 24 mm, IP 66, Colour: Black

Artikelnummer	Artikelbezeichnung	GTIN (EAN)	VPE
<u>28554.4</u>	KDS-DEG/K 7-24 BK	4044211216108	10 ST



Seal, Mounting type: Plug in, Length x width: 42.8 mm, Max. cable diameter: 19 mm, IP 66, Colour: Black

Artikelnummer	Artikelbezeichnung	GTIN (EAN)	VPE
<u>28539.4</u>	KDS-DEG 18-19 BK	4044211215330	10 ST



Seal, Mounting type: Plug in, Length x width: 42.8 mm, Max. cable diameter: 21 mm, IP 66, Colour: Black

Artikelnummer	Artikelbezeichnung	GTIN (EAN)	VPE
<u>28541.4</u>	KDS-DEG 20-21 BK	4044211215378	10 ST



Seal, Mounting type: Plug in, Length x width: 42.8 mm, Max. cable diameter: 22 mm, IP 66, Colour: Black

Artikelnummer	Artikelbezeichnung	GTIN (EAN)	VPE
<u>28542.4</u>	KDS-DEG 21-22 BK	4044211215392	10 ST

Small Seals



Seal, Mounting type: Plug in, Length x width: 20.3 mm, Max. cable diameter: 11 mm, IP 66, Colour: Black

Artikelnummer	Artikelbezeichnung	GTIN (EAN)	VPE
<u>28530.4</u>	KDS-DE 10-11 BK	4044211210960	10 ST



Seal, Mounting type: Plug in, Length x width: 20.3 mm, Max. cable diameter: 12 mm, IP 66, Colour: Black

Artikelnummer	Artikelbezeichnung	GTIN (EAN)	VPE
<u>28531.4</u>	KDS-DE 11-12 BK	4044211210977	10 ST



Seal, Mounting type: Plug in, Length x width: 20.3 mm, Max. cable diameter: 13 mm, IP 66, Colour: Black

Artikelnummer	Artikelbezeichnung	GTIN (EAN)	VPE
<u>28532.4</u>	KDS-DE 12-13 BK	4044211210984	10 ST



Seal, Mounting type: Plug in, Length x width: 20.3 mm, Max. cable diameter: 14 mm, IP 66, Colour: Black

Artikelnummer	Artikelbezeichnung	GTIN (EAN)	VPE
<u>28533.4</u>	KDS-DE 13-14 BK	4044211210991	10 ST



Seal, Mounting type: Plug in, Length x width: 20.3 mm, Max. cable diameter: 11 mm, IP 66, Colour: Black

Artikelnummer	Artikelbezeichnung	GTIN (EAN)	VPE
<u>28553.4</u>	KDS-DE/K 2-11 BK	4044211216092	10 ST



Seal, Mounting type: Plug in, Length x width: 20.3 mm, Max. cable diameter: 5 mm, IP 66, Colour: Black

Artikelnummer	Artikelbezeichnung	GTIN (EAN)	VPE
<u>28555.4</u>	KDS-DE 2X4-5 BK	4044211215620	10 ST



Seal dummy, Mounting type: Plug in, Length x width: 20.3 mm, IP 66, Colour: Black

Artikelnummer	Artikelbezeichnung	GTIN (EAN)	VPE
<u>28520.4</u>	KDS-DE/B BK	4044211210878	10 ST

Small Seals



Seal, Mounting type: Plug in, Length x width: 20.3 mm, Max. cable diameter: 2 mm, IP 66, Colour: Black

Artikelnummer	Artikelbezeichnung	GTIN (EAN)	VPE
<u>28521.4</u>	KDS-DE 1,5-2 BK	4044211210007	10 ST



Seal, Mounting type: Plug in, Length x width: 20.3 mm, Max. cable diameter: 3 mm, IP 66, Colour: Black

Artikelnummer	Artikelbezeichnung	GTIN (EAN)	VPE
<u>28522.4</u>	KDS-DE 2-3 BK	4044211210885	10 ST



Seal, Mounting type: Plug in, Length x width: 20.3 mm, Max. cable diameter: 4 mm, IP 66, Colour: Black

Artikelnummer	Artikelbezeichnung	GTIN (EAN)	VPE
<u>28523.4</u>	KDS-DE 3-4 BK	4044211210892	10 ST



Seal, Mounting type: Plug in, Length x width: 20.3 mm, Max. cable diameter: 5 mm, IP 66, Colour: Black

Artikelnummer	Artikelbezeichnung	GTIN (EAN)	VPE
<u>28524.4</u>	KDS-DE 4-5 BK	4044211210908	10 ST



Seal, Mounting type: Plug in, Length x width: 20.3 mm, Max. cable diameter: 6 mm, IP 66, Colour: Black

Artikelnummer	Artikelbezeichnung	GTIN (EAN)	VPE
<u>28525.4</u>	KDS-DE 5-6 BK	4044211210915	10 ST



Seal, Mounting type: Plug in, Length x width: 20.3 mm, Max. cable diameter: 7 mm, IP 66, Colour: Black

Artikelnummer	Artikelbezeichnung	GTIN (EAN)	VPE
<u>28526.4</u>	KDS-DE 6-7 BK	4044211210922	10 ST



Seal, Mounting type: Plug in, Length x width: 20.3 mm, Max. cable diameter: 8 mm, IP 66, Colour: Black

Artikelnummer	Artikelbezeichnung	GTIN (EAN)	VPE
<u>28527.4</u>	KDS-DE 7-8 BK	4044211210939	10 ST

28517.4 KDS-Inlay 2 BK

Small Seals



Seal, Mounting type: Plug in, Length x width: 20.3 mm, Max. cable diameter: 9 mm, IP 66, Colour: Black

Artikelnummer	Artikelbezeichnung	GTIN (EAN)	VPE
<u>28528.4</u>	KDS-DE 8-9 BK	4044211210946	10 ST



Seal, Mounting type: Plug in, Length x width: 20.3 mm, Max. cable diameter: 10 mm, IP 66, Colour: Black

Artikelnummer	Artikelbezeichnung	GTIN (EAN)	VPE
<u>28529.4</u>	KDS-DE 9-10 BK	4044211210953	10 ST

Screw frame



Cable entry with foamed-in seal, Mounting type: Screws, Length: 153 mm, Width: 70 mm, IP 66, Colour: Black

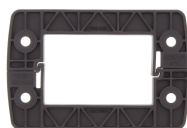
Artikelnummer	Artikelbezeichnung	GTIN (EAN)	VPE
<u>28504.4</u>	KDS-SR 10/24 BK	4044211210809	1 ST



Cable entry with foamed-in seal, Mounting type: Screws, Length: 106 mm, Width: 70 mm, IP 66, Colour: Black

Artikelnummer	Artikelbezeichnung	GTIN (EAN)	VPE
<u>28500.4</u>	KDS-SR 6/10 BK	4044211210021	1 ST

Locking frame



Inner locking frame, Length: 105 mm, Height: 11.5 mm, Colour: Black

Artikelnummer	Artikelbezeichnung	GTIN (EAN)	VPE
<u>28501.4</u>	KDS-IVR 6/10 BK	4044211210779	10 ST



Inner locking frame, Length: 152 mm, Height: 11.5 mm, Colour: Black

Artikelnummer	Artikelbezeichnung	GTIN (EAN)	VPE
<u>28505.4</u>	KDS-IVR 10/24 BK	4044211210816	10 ST

28517.4 KDS-Inlay 2 BK

##INVERSE##CONTA-CABLE



Seal, Mounting type: Plug in, Length x width: 42.8 mm, Max. cable diameter: 20 mm, IP 66, Colour: Black

Artikelnummer	Artikelbezeichnung	GTIN (EAN)	VPE
28540.4	KDS-DEG 19-20 BK	4044211215354	10 ST



Seal, Mounting type: Plug in, Length x width: 42.8 mm, Max. cable diameter: 33 mm, IP 66, Colour: Black

Artikelnummer	Artikelbezeichnung	GTIN (EAN)	VPE
28601.4	KDS-DEG 32-33 BK	4044211215613	10 ST



Cable entry flange plate with foamed-in frame gasket, Mounting type: Screw, Length: 165 mm, Width: 123 mm, IP66, Colour: Black

Artikelnummer	Artikelbezeichnung	GTIN (EAN)	VPE
28660.4	KDS-FP 2x10/24 BK	4044211220358	1 ST



Cable entry flange plate with foamed-in frame gasket, Mounting type: Screw, Length: 165 mm, Width: 174 mm, IP66, Colour: Black

Artikelnummer	Artikelbezeichnung	GTIN (EAN)	VPE
28661.4	KDS-FP 3x10/24 BK	4044211220365	1 ST



Seal dummy, Mounting type: Plug in, Length x width: 42.8 mm, IP 66, Colour: Black

Artikelnummer	Artikelbezeichnung	GTIN (EAN)	VPE
28534.4	KDS-DEG/B BK	4044211215255	10 ST



Seal, Mounting type: Plug in, Length x width: 42.8 mm, Max. cable diameter: 15 mm, IP 66, Colour: Black

Artikelnummer	Artikelbezeichnung	GTIN (EAN)	VPE
28535.4	KDS-DEG 14-15 BK	4044211209995	10 ST



Seal, Mounting type: Plug in, Length x width: 42.8 mm, Max. cable diameter: 16 mm, IP 66, Colour: Black

Artikelnummer	Artikelbezeichnung	GTIN (EAN)	VPE
28536.4	KDS-DEG 15-16 BK	4044211215279	10 ST

28517.4 KDS-Inlay 2 BK

##INVERSE##CONTA-CABLE



Seal, Mounting type: Plug in, Length x width: 42.8 mm, Max. cable diameter: 17 mm, IP 66, Colour: Black

Artikelnummer	Artikelbezeichnung	GTIN (EAN)	VPE
<u>28537.4</u>	KDS-DEG 16-17 BK	4044211215293	10 ST



Seal, Mounting type: Plug in, Length x width: 42.8 mm, Max. cable diameter: 18 mm, IP 66, Colour: Black

Artikelnummer	Artikelbezeichnung	GTIN (EAN)	VPE
<u>28538.4</u>	KDS-DEG 17-18 BK	4044211215316	10 ST



Seal, Mounting type: Plug in, Length x width: 42.8 mm, Max. cable diameter: 24 mm, IP 66, Colour: Black

Artikelnummer	Artikelbezeichnung	GTIN (EAN)	VPE
<u>28544.4</u>	KDS-DEG 23-24 BK	4044211215439	10 ST



Seal, Mounting type: Plug in, Length x width: 42.8 mm, Max. cable diameter: 20 mm, IP 66, Colour: Grey

Artikelnummer	Artikelbezeichnung	GTIN (EAN)	VPE
<u>28581.6</u>	KDS-DEG 19-20 GR	4044211215347	10 ST



Seal, Mounting type: Plug in, Length x width: 42.8 mm, Max. cable diameter: 21 mm, IP 66, Colour: Grey

Artikelnummer	Artikelbezeichnung	GTIN (EAN)	VPE
<u>28582.6</u>	KDS-DEG 20-21 GR	4044211215361	10 ST



Seal, Mounting type: Plug in, Length x width: 42.8 mm, Max. cable diameter: 22 mm, IP 66, Colour: Grey

Artikelnummer	Artikelbezeichnung	GTIN (EAN)	VPE
<u>28583.6</u>	KDS-DEG 21-22 GR	4044211215385	10 ST



Seal, Mounting type: Plug in, Length x width: 42.8 mm, Max. cable diameter: 23 mm, IP 66, Colour: Grey

Artikelnummer	Artikelbezeichnung	GTIN (EAN)	VPE
<u>28584.6</u>	KDS-DEG 22-23 GR	4044211215408	10 ST

28517.4 KDS-Inlay 2 BK

##INVERSE##CONTA-CABLE



Seal, Mounting type: Plug in, Length x width: 42.8 mm, Max. cable diameter: 25 mm, IP 66, Colour: Black

Artikelnummer	Artikelbezeichnung	GTIN (EAN)	VPE
<u>28545.4</u>	KDS-DEG 24-25 BK	4044211215453	10 ST



Seal, Mounting type: Plug in, Length x width: 42.8 mm, Max. cable diameter: 26 mm, IP 66, Colour: Black

Artikelnummer	Artikelbezeichnung	GTIN (EAN)	VPE
<u>28546.4</u>	KDS-DEG 25-26 BK	4044211215460	10 ST



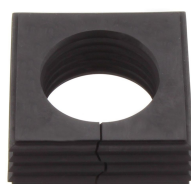
Seal, Mounting type: Plug in, Length x width: 42.8 mm, Max. cable diameter: 27 mm, IP 66, Colour: Black

Artikelnummer	Artikelbezeichnung	GTIN (EAN)	VPE
<u>28547.4</u>	KDS-DEG 26-27 BK	4044211215491	10 ST



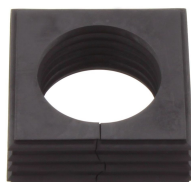
Seal, Mounting type: Plug in, Length x width: 42.8 mm, Max. cable diameter: 28 mm, IP 66, Colour: Black

Artikelnummer	Artikelbezeichnung	GTIN (EAN)	VPE
<u>28548.4</u>	KDS-DEG 27-28 BK	4044211215514	10 ST



Seal, Mounting type: Plug in, Length x width: 42.8 mm, Max. cable diameter: 29 mm, IP 66, Colour: Black

Artikelnummer	Artikelbezeichnung	GTIN (EAN)	VPE
<u>28549.4</u>	KDS-DEG 28-29 BK	4044211215538	10 ST



Seal, Mounting type: Plug in, Length x width: 42.8 mm, Max. cable diameter: 30 mm, IP 66, Colour: Black

Artikelnummer	Artikelbezeichnung	GTIN (EAN)	VPE
<u>28550.4</u>	KDS-DEG 29-30 BK	4044211215552	10 ST

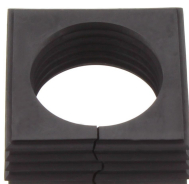


Seal, Mounting type: Plug in, Length x width: 42.8 mm, Max. cable diameter: 31 mm, IP 66, Colour: Black

Artikelnummer	Artikelbezeichnung	GTIN (EAN)	VPE
<u>28551.4</u>	KDS-DEG 30-31 BK	4044211215576	10 ST

28517.4 KDS-Inlay 2 BK

##INVERSE##CONTA-CABLE



Seal, Mounting type: Plug in, Length x width: 42.8 mm, Max. cable diameter: 32 mm, IP 66, Colour: Black

Artikelnummer	Artikelbezeichnung	GTIN (EAN)	VPE
<u>28552.4</u>	KDS-DEG 31-32 BK	4044211215590	10 ST



Seal, Mounting type: Plug in, Length x width: 42.8 mm, Max. cable diameter: 18 mm, IP 66, Colour: Grey

Artikelnummer	Artikelbezeichnung	GTIN (EAN)	VPE
<u>28579.6</u>	KDS-DEG 17-18 GR	4044211215309	10 ST



Seal, Mounting type: Plug in, Length x width: 42.8 mm, Max. cable diameter: 19 mm, IP 66, Colour: Grey

Artikelnummer	Artikelbezeichnung	GTIN (EAN)	VPE
<u>28580.6</u>	KDS-DEG 18-19 GR	4044211215323	10 ST



Seal dummy, Mounting type: Plug in, Length x width: 42.8 mm, IP 66, Colour: Grey

Artikelnummer	Artikelbezeichnung	GTIN (EAN)	VPE
<u>28575.6</u>	KDS-DEG/B GR	4044211215248	10 ST



Seal, Mounting type: Plug in, Length x width: 42.8 mm, Max. cable diameter: 15 mm, IP 66, Colour: Grey

Artikelnummer	Artikelbezeichnung	GTIN (EAN)	VPE
<u>28576.6</u>	KDS-DEG 14-15 GR	4044211209971	10 ST



Seal, Mounting type: Plug in, Length x width: 42.8 mm, Max. cable diameter: 16 mm, IP 66, Colour: Grey

Artikelnummer	Artikelbezeichnung	GTIN (EAN)	VPE
<u>28577.6</u>	KDS-DEG 15-16 GR	4044211215262	10 ST

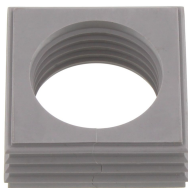


Seal, Mounting type: Plug in, Length x width: 42.8 mm, Max. cable diameter: 17 mm, IP 66, Colour: Grey

Artikelnummer	Artikelbezeichnung	GTIN (EAN)	VPE
<u>28578.6</u>	KDS-DEG 16-17 GR	4044211215286	10 ST

28517.4 KDS-Inlay 2 BK

##INVERSE##CONTA-CABLE



Seal, Mounting type: Plug in, Length x width: 42.8 mm, Max. cable diameter: 32 mm, IP 66, Colour: Grey

Artikelnummer	Artikelbezeichnung	GTIN (EAN)	VPE
28593.6	KDS-DEG 31-32 GR	4044211215583	10 ST



Seal, Mounting type: Plug in, Length x width: 42.8 mm, Max. cable diameter: 33 mm, IP 66, Colour: Grey

Artikelnummer	Artikelbezeichnung	GTIN (EAN)	VPE
28594.6	KDS-DEG 32-33 GR	4044211215606	10 ST



Seal, Mounting type: Plug in, Length x width: 42.8 mm, Max. cable diameter: 23 mm, IP 66, Colour: Black

Artikelnummer	Artikelbezeichnung	GTIN (EAN)	VPE
28543.4	KDS-DEG 22-23 BK	4044211215415	10 ST



Seal, Mounting type: Plug in, Length x width: 42.8 mm, Max. cable diameter: 24 mm, IP 66, Colour: Black

Artikelnummer	Artikelbezeichnung	GTIN (EAN)	VPE
28554.4	KDS-DEG/K 7-24 BK	4044211216108	10 ST



Seal, Mounting type: Plug in, Length x width: 42.8 mm, Max. cable diameter: 24 mm, IP 66, Colour: Grey

Artikelnummer	Artikelbezeichnung	GTIN (EAN)	VPE
28585.6	KDS-DEG 23-24 GR	4044211215422	10 ST



Seal, Mounting type: Plug in, Length x width: 42.8 mm, Max. cable diameter: 25 mm, IP 66, Colour: Grey

Artikelnummer	Artikelbezeichnung	GTIN (EAN)	VPE
28586.6	KDS-DEG 24-25 GR	4044211215446	10 ST



Seal, Mounting type: Plug in, Length x width: 42.8 mm, Max. cable diameter: 26 mm, IP 66, Colour: Grey

Artikelnummer	Artikelbezeichnung	GTIN (EAN)	VPE
28587.6	KDS-DEG 25-26 GR	4044211215477	10 ST

28517.4 KDS-Inlay 2 BK

##INVERSE##CONTA-CABLE



Seal, Mounting type: Plug in, Length x width: 42.8 mm, Max. cable diameter: 27 mm, IP 66, Colour: Grey

Artikelnummer	Artikelbezeichnung	GTIN (EAN)	VPE
<u>28588.6</u>	KDS-DEG 26-27 GR	4044211215484	10 ST



Seal, Mounting type: Plug in, Length x width: 42.8 mm, Max. cable diameter: 28 mm, IP 66, Colour: Grey

Artikelnummer	Artikelbezeichnung	GTIN (EAN)	VPE
<u>28589.6</u>	KDS-DEG 27-28 GR	4044211215507	10 ST



Seal, Mounting type: Plug in, Length x width: 42.8 mm, Max. cable diameter: 29 mm, IP 66, Colour: Grey

Artikelnummer	Artikelbezeichnung	GTIN (EAN)	VPE
<u>28590.6</u>	KDS-DEG 28-29 GR	4044211215521	10 ST



Seal, Mounting type: Plug in, Length x width: 42.8 mm, Max. cable diameter: 30 mm, IP 66, Colour: Grey

Artikelnummer	Artikelbezeichnung	GTIN (EAN)	VPE
<u>28591.6</u>	KDS-DEG 29-30 GR	4044211215545	10 ST



Seal, Mounting type: Plug in, Length x width: 42.8 mm, Max. cable diameter: 31 mm, IP 66, Colour: Grey

Artikelnummer	Artikelbezeichnung	GTIN (EAN)	VPE
<u>28592.6</u>	KDS-DEG 30-31 GR	4044211215569	10 ST



Seal, Mounting type: Plug in, Length x width: 42.8 mm, Max. cable diameter: 19 mm, IP 66, Colour: Black

Artikelnummer	Artikelbezeichnung	GTIN (EAN)	VPE
<u>28539.4</u>	KDS-DEG 18-19 BK	4044211215330	10 ST



Seal, Mounting type: Plug in, Length x width: 42.8 mm, Max. cable diameter: 21 mm, IP 66, Colour: Black

Artikelnummer	Artikelbezeichnung	GTIN (EAN)	VPE
<u>28541.4</u>	KDS-DEG 20-21 BK	4044211215378	10 ST

28517.4 KDS-Inlay 2 BK

##INVERSE##CONTA-CABLE



Seal, Mounting type: Plug in, Length x width: 42.8 mm, Max. cable diameter: 22 mm, IP 66, Colour: Black

Artikelnummer	Artikelbezeichnung	GTIN (EAN)	VPE
<u>28542.4</u>	KDS-DEG 21-22 BK	4044211215392	10 ST



Seal, Mounting type: Plug in, Length x width: 20.3 mm, Max. cable diameter: 7 mm, IP 66, Colour: Grey

Artikelnummer	Artikelbezeichnung	GTIN (EAN)	VPE
<u>28567.6</u>	KDS-DE 6-7 GR	4044211211059	10 ST



Seal, Mounting type: Plug in, Length x width: 20.3 mm, Max. cable diameter: 8 mm, IP 66, Colour: Grey

Artikelnummer	Artikelbezeichnung	GTIN (EAN)	VPE
<u>28568.6</u>	KDS-DE 7-8 GR	4044211211066	10 ST



Seal, Mounting type: Plug in, Length x width: 20.3 mm, Max. cable diameter: 9 mm, IP 66, Colour: Grey

Artikelnummer	Artikelbezeichnung	GTIN (EAN)	VPE
<u>28569.6</u>	KDS-DE 8-9 GR	4044211211073	10 ST



Seal, Mounting type: Plug in, Length x width: 20.3 mm, Max. cable diameter: 10 mm, IP 66, Colour: Grey

Artikelnummer	Artikelbezeichnung	GTIN (EAN)	VPE
<u>28570.6</u>	KDS-DE 9-10 GR	4044211211080	10 ST



Seal, Mounting type: Plug in, Length x width: 20.3 mm, Max. cable diameter: 11 mm, IP 66, Colour: Grey

Artikelnummer	Artikelbezeichnung	GTIN (EAN)	VPE
<u>28571.6</u>	KDS-DE 10-11 GR	4044211211097	10 ST



Seal, Mounting type: Plug in, Length x width: 20.3 mm, Max. cable diameter: 12 mm, IP 66, Colour: Grey

Artikelnummer	Artikelbezeichnung	GTIN (EAN)	VPE
<u>28572.6</u>	KDS-DE 11-12 GR	4044211211103	10 ST

28517.4 KDS-Inlay 2 BK

##INVERSE##CONTA-CABLE



Seal, Mounting type: Plug in, Length x width: 20.3 mm, Max. cable diameter: 13 mm, IP 66, Colour: Grey

Artikelnummer	Artikelbezeichnung	GTIN (EAN)	VPE
<u>28573.6</u>	KDS-DE 12-13 GR	4044211215224	10 ST



Seal, Mounting type: Plug in, Length x width: 20.3 mm, Max. cable diameter: 3 mm, IP 66, Colour: Grey

Artikelnummer	Artikelbezeichnung	GTIN (EAN)	VPE
<u>28563.6</u>	KDS-DE 2-3 GR	4044211211011	10 ST



Seal, Mounting type: Plug in, Length x width: 20.3 mm, Max. cable diameter: 4 mm, IP 66, Colour: Grey

Artikelnummer	Artikelbezeichnung	GTIN (EAN)	VPE
<u>28564.6</u>	KDS-DE 3-4 GR	4044211211028	10 ST



Seal, Mounting type: Plug in, Length x width: 20.3 mm, Max. cable diameter: 5 mm, IP 66, Colour: Grey

Artikelnummer	Artikelbezeichnung	GTIN (EAN)	VPE
<u>28565.6</u>	KDS-DE 4-5 GR	4044211211035	10 ST



Seal, Mounting type: Plug in, Length x width: 20.3 mm, Max. cable diameter: 6 mm, IP 66, Colour: Grey

Artikelnummer	Artikelbezeichnung	GTIN (EAN)	VPE
<u>28566.6</u>	KDS-DE 5-6 GR	4044211211042	10 ST



Seal, Mounting type: Plug in, Length x width: 20.3 mm, Max. cable diameter: 14 mm, IP 66, Colour: Grey

Artikelnummer	Artikelbezeichnung	GTIN (EAN)	VPE
<u>28574.6</u>	KDS-DE 13-14 GR	4044211215231	10 ST



Seal, Mounting type: Plug in, Length x width: 20.3 mm, Max. cable diameter: 5 mm, IP 66, Colour: Grey

Artikelnummer	Artikelbezeichnung	GTIN (EAN)	VPE
<u>28595.6</u>	KDS-DE 2X4-5 GR	4044211215682	10 ST

28517.4 KDS-Inlay 2 BK

##INVERSE##CONTA-CABLE



Seal, Mounting type: Plug in, Length x width: 20.3 mm, Max. cable diameter: 6 mm, IP 66, Colour: Grey

Artikelnummer	Artikelbezeichnung	GTIN (EAN)	VPE
28596.6	KDS-DE 2X5-6 GR	4044211215699	10 ST



Seal, Mounting type: Plug in, Length x width: 20.3 mm, Max. cable diameter: 3 mm, IP 66, Colour: Grey

Artikelnummer	Artikelbezeichnung	GTIN (EAN)	VPE
28597.6	KDS-DE 4X2-3 GR	4044211215705	10 ST



Seal, Mounting type: Plug in, Length x width: 20.3 mm, Max. cable diameter: 4 mm, IP 66, Colour: Grey

Artikelnummer	Artikelbezeichnung	GTIN (EAN)	VPE
28598.6	KDS-DE 4X3-4 GR	4044211215712	10 ST



Seal, Mounting type: Plug in, Length x width: 20.3 mm, IP 66, Colour: Grey

Artikelnummer	Artikelbezeichnung	GTIN (EAN)	VPE
28599.6	KDS-DE/1XASI GR	4044211215729	10 ST



Seal, Mounting type: Plug in, Length x width: 20.3 mm, IP 66, Colour: Black

Artikelnummer	Artikelbezeichnung	GTIN (EAN)	VPE
28560.4	KDS-DE/2XASI BK	4044211215675	10 ST



Seal dummy, Mounting type: Plug in, Length x width: 20.3 mm, IP 66, Colour: Grey

Artikelnummer	Artikelbezeichnung	GTIN (EAN)	VPE
28561.6	KDS-DE/B GR	4044211211004	10 ST



Seal, Mounting type: Plug in, Length x width: 20.3 mm, Max. cable diameter: 2 mm, IP 66, Colour: Grey

Artikelnummer	Artikelbezeichnung	GTIN (EAN)	VPE
28562.6	KDS-DE 1,5-2 GR	4044211209988	10 ST

28517.4 KDS-Inlay 2 BK

##INVERSE##CONTA-CABLE



Seal, Mounting type: Plug in, Length x width: 20.3 mm, Max. cable diameter: 6.5 mm, IP 66, Colour: Black

Artikelnummer	Artikelbezeichnung	GTIN (EAN)	VPE
<u>28682.4</u>	KDS-DE 2X6,5 BK	4044211219536	10 ST



Seal, Mounting type: Plug in, Length x width: 20.3 mm, Max. cable diameter: 6.5 mm, IP 66, Colour: Black

Artikelnummer	Artikelbezeichnung	GTIN (EAN)	VPE
<u>28687.4</u>	KDS-DE 3X5-6 BK	4044211220501	10 ST



Seal, Mounting type: Plug in, Length x width: 20.3 mm, Max. cable diameter: 2 mm, IP 66, Colour: Grey

Artikelnummer	Artikelbezeichnung	GTIN (EAN)	VPE
<u>28696.6</u>	KDS-DE 2 GR	4044211220884	10 ST



Seal, Mounting type: Plug in, Length x width: 20.3 mm, Max. cable diameter: 3 mm, IP 66, Colour: Black

Artikelnummer	Artikelbezeichnung	GTIN (EAN)	VPE
<u>28697.4</u>	KDS-DE 3 BK	4044211220891	10 ST



Seal, Mounting type: Plug in, Length x width: 20.3 mm, Max. cable diameter: 3 mm, IP 66, Colour: Grey

Artikelnummer	Artikelbezeichnung	GTIN (EAN)	VPE
<u>28698.6</u>	KDS-DE 3 GR	4044211220907	10 ST



Seal, Mounting type: Plug in, Length x width: 20.3 mm, IP 66, Colour: Grey

Artikelnummer	Artikelbezeichnung	GTIN (EAN)	VPE
<u>28600.6</u>	KDS-DE/2XASI GR	4044211215736	10 ST



Seal, Mounting type: Plug in, Length x width: 20.3 mm, Max. cable diameter: 4.5 mm, IP 66, Colour: Grey

Artikelnummer	Artikelbezeichnung	GTIN (EAN)	VPE
<u>28606.6</u>	KDS-DE 4X4,5 GR	4044211216252	10 ST

28517.4 KDS-Inlay 2 BK

##INVERSE##CONTA-CABLE



Seal, Mounting type: Plug in, Length x width: 20.3 mm, Max. cable diameter: 6.5 mm, IP 66, Colour: Grey

Artikelnummer	Artikelbezeichnung	GTIN (EAN)	VPE
<u>28607.6</u>	KDS-DE 2X6,5 GR	4044211216238	10 ST



Seal, Mounting type: Plug in, Length x width: 20.3 mm, Max. cable diameter: 15 mm, IP 66, Colour: Black

Artikelnummer	Artikelbezeichnung	GTIN (EAN)	VPE
<u>28608.4</u>	KDS-DE 14-15 BK	4044211219314	10 ST



Seal, Mounting type: Plug in, Length x width: 20.3 mm, Max. cable diameter: 15 mm, IP 66, Colour: Grey

Artikelnummer	Artikelbezeichnung	GTIN (EAN)	VPE
<u>28609.6</u>	KDS-DE 14-15 GR	4044211219307	10 ST



Seal, Mounting type: Plug in, Length x width: 20.3 mm, Max. cable diameter: 16 mm, IP 66, Colour: Black

Artikelnummer	Artikelbezeichnung	GTIN (EAN)	VPE
<u>28670.4</u>	KDS-DE 15-16 BK	4044211219321	10 ST



Seal, Mounting type: Plug in, Length x width: 20.3 mm, Max. cable diameter: 17 mm, IP 66, Colour: Grey

Artikelnummer	Artikelbezeichnung	GTIN (EAN)	VPE
<u>28671.6</u>	KDS-DE 15-16 GR	4044211219338	10 ST



Seal, Mounting type: Plug in, Length x width: 20.3 mm, Max. cable diameter: 5 mm, IP 66, Colour: Black

Artikelnummer	Artikelbezeichnung	GTIN (EAN)	VPE
<u>28672.4</u>	KDS-DE 4X5 BK	4044211219345	10 ST



Seal, Mounting type: Plug in, Length x width: 20.3 mm, Max. cable diameter: 5 mm, IP 66, Colour: Grey

Artikelnummer	Artikelbezeichnung	GTIN (EAN)	VPE
<u>28673.6</u>	KDS-DE 4X5 GR	4044211219352	10 ST

28517.4 KDS-Inlay 2 BK

##INVERSE##CONTA-CABLE



Seal, Mounting type: Plug in, Length x width: 20.3 mm, Max. cable diameter: 4.5 mm, IP 66, Colour: Black

Artikelnummer	Artikelbezeichnung	GTIN (EAN)	VPE
28681.4	KDS-DE 4X4,5 BK	4044211219543	10 ST



Seal, Mounting type: Plug in, Length x width: 20.3 mm, Max. cable diameter: 11 mm, IP 66, Colour: Black

Artikelnummer	Artikelbezeichnung	GTIN (EAN)	VPE
28530.4	KDS-DE 10-11 BK	4044211210960	10 ST



Seal, Mounting type: Plug in, Length x width: 20.3 mm, Max. cable diameter: 12 mm, IP 66, Colour: Black

Artikelnummer	Artikelbezeichnung	GTIN (EAN)	VPE
28531.4	KDS-DE 11-12 BK	4044211210977	10 ST



Seal, Mounting type: Plug in, Length x width: 20.3 mm, Max. cable diameter: 13 mm, IP 66, Colour: Black

Artikelnummer	Artikelbezeichnung	GTIN (EAN)	VPE
28532.4	KDS-DE 12-13 BK	4044211210984	10 ST



Seal, Mounting type: Plug in, Length x width: 20.3 mm, Max. cable diameter: 14 mm, IP 66, Colour: Black

Artikelnummer	Artikelbezeichnung	GTIN (EAN)	VPE
28533.4	KDS-DE 13-14 BK	4044211210991	10 ST



Seal, Mounting type: Plug in, Length x width: 20.3 mm, Max. cable diameter: 11 mm, IP 66, Colour: Black

Artikelnummer	Artikelbezeichnung	GTIN (EAN)	VPE
28553.4	KDS-DE/K 2-11 BK	4044211216092	10 ST



Seal, Mounting type: Plug in, Length x width: 20.3 mm, Max. cable diameter: 5 mm, IP 66, Colour: Black

Artikelnummer	Artikelbezeichnung	GTIN (EAN)	VPE
28555.4	KDS-DE 2X4-5 BK	4044211215620	10 ST

28517.4 KDS-Inlay 2 BK

##INVERSE##CONTA-CABLE



Seal, Mounting type: Plug in, Length x width: 20.3 mm, Max. cable diameter: 6 mm, IP 66, Colour: Black

Artikelnummer	Artikelbezeichnung	GTIN (EAN)	VPE
28556.4	KDS-DE 2X5-6 BK	4044211215637	10 ST



Seal, Mounting type: Plug in, Length x width: 20.3 mm, Max. cable diameter: 3 mm, IP 66, Colour: Black

Artikelnummer	Artikelbezeichnung	GTIN (EAN)	VPE
28557.4	KDS-DE 4X2-3 BK	4044211215644	10 ST



Seal, Mounting type: Plug in, Length x width: 20.3 mm, Max. cable diameter: 4 mm, IP 66, Colour: Black

Artikelnummer	Artikelbezeichnung	GTIN (EAN)	VPE
28558.4	KDS-DE 4X3-4 BK	4044211215651	10 ST



Seal, Mounting type: Plug in, Length x width: 20.3 mm, IP 66, Colour: Black

Artikelnummer	Artikelbezeichnung	GTIN (EAN)	VPE
28559.4	KDS-DE/1XASI BK	4044211215668	10 ST



Seal dummy, Mounting type: Plug in, Length x width: 20.3 mm, IP 66, Colour: Black

Artikelnummer	Artikelbezeichnung	GTIN (EAN)	VPE
28520.4	KDS-DE/B BK	4044211210878	10 ST



Seal, Mounting type: Plug in, Length x width: 20.3 mm, Max. cable diameter: 2 mm, IP 66, Colour: Black

Artikelnummer	Artikelbezeichnung	GTIN (EAN)	VPE
28521.4	KDS-DE 1,5-2 BK	4044211210007	10 ST



Seal, Mounting type: Plug in, Length x width: 20.3 mm, Max. cable diameter: 3 mm, IP 66, Colour: Black

Artikelnummer	Artikelbezeichnung	GTIN (EAN)	VPE
28522.4	KDS-DE 2-3 BK	4044211210885	10 ST

28517.4 KDS-Inlay 2 BK

##INVERSE##CONTA-CABLE



Seal, Mounting type: Plug in, Length x width: 20.3 mm, Max. cable diameter: 4 mm, IP 66, Colour: Black

Artikelnummer	Artikelbezeichnung	GTIN (EAN)	VPE
<u>28523.4</u>	KDS-DE 3-4 BK	4044211210892	10 ST



Seal, Mounting type: Plug in, Length x width: 20.3 mm, Max. cable diameter: 5 mm, IP 66, Colour: Black

Artikelnummer	Artikelbezeichnung	GTIN (EAN)	VPE
<u>28524.4</u>	KDS-DE 4-5 BK	4044211210908	10 ST



Seal, Mounting type: Plug in, Length x width: 20.3 mm, Max. cable diameter: 6 mm, IP 66, Colour: Black

Artikelnummer	Artikelbezeichnung	GTIN (EAN)	VPE
<u>28525.4</u>	KDS-DE 5-6 BK	4044211210915	10 ST



Seal, Mounting type: Plug in, Length x width: 20.3 mm, Max. cable diameter: 7 mm, IP 66, Colour: Black

Artikelnummer	Artikelbezeichnung	GTIN (EAN)	VPE
<u>28526.4</u>	KDS-DE 6-7 BK	4044211210922	10 ST



Seal, Mounting type: Plug in, Length x width: 20.3 mm, Max. cable diameter: 8 mm, IP 66, Colour: Black

Artikelnummer	Artikelbezeichnung	GTIN (EAN)	VPE
<u>28527.4</u>	KDS-DE 7-8 BK	4044211210939	10 ST



Seal, Mounting type: Plug in, Length x width: 20.3 mm, Max. cable diameter: 9 mm, IP 66, Colour: Black

Artikelnummer	Artikelbezeichnung	GTIN (EAN)	VPE
<u>28528.4</u>	KDS-DE 8-9 BK	4044211210946	10 ST



Seal, Mounting type: Plug in, Length x width: 20.3 mm, Max. cable diameter: 10 mm, IP 66, Colour: Black

Artikelnummer	Artikelbezeichnung	GTIN (EAN)	VPE
<u>28529.4</u>	KDS-DE 9-10 BK	4044211210953	10 ST

28517.4 KDS-Inlay 2 BK

##INVERSE##CONTA-CABLE



Seal, Mounting type: Plug in, Length x width: 20.3 mm, Max. cable diameter: 6 mm, IP 66, Colour: Grey

Artikelnummer	Artikelbezeichnung	GTIN (EAN)	VPE
<u>28688.6</u>	KDS-DE 3X5-6 GR	4044211220518	10 ST



Seal, Mounting type: Plug in, Length x width: 20.3 mm, Max. cable diameter: 7 mm, IP 66, Colour: Black

Artikelnummer	Artikelbezeichnung	GTIN (EAN)	VPE
<u>28689.4</u>	KDS-DE 2X7 BK	4044211220815	10 ST



Seal, Mounting type: Plug in, Length x width: 20.3 mm, Max. cable diameter: 7 mm, IP 66, Colour: Grey

Artikelnummer	Artikelbezeichnung	GTIN (EAN)	VPE
<u>28690.6</u>	KDS-DE 2X7 GR	4044211220822	10 ST



Seal, Mounting type: Plug in, Length x width: 20.3 mm, Max. cable diameter: 8 mm, IP 66, Colour: Black

Artikelnummer	Artikelbezeichnung	GTIN (EAN)	VPE
<u>28691.4</u>	KDS-DE 2X8 BK	4044211220839	10 ST



Seal, Mounting type: Plug in, Length x width: 20.3 mm, Max. cable diameter: 8 mm, IP 66, Colour: Grey

Artikelnummer	Artikelbezeichnung	GTIN (EAN)	VPE
<u>28692.6</u>	KDS-DE 2X8 GR	4044211220846	10 ST



Seal, Mounting type: Plug in, Length x width: 20.3 mm, Max. cable diameter: 1.5 mm, IP 66, Colour: Black

Artikelnummer	Artikelbezeichnung	GTIN (EAN)	VPE
<u>28693.4</u>	KDS-DE 1,5 BK	4044211220853	10 ST



Seal, Mounting type: Plug in, Length x width: 20.3 mm, Max. cable diameter: 1.5 mm, IP 66, Colour: Grey

Artikelnummer	Artikelbezeichnung	GTIN (EAN)	VPE
<u>28694.6</u>	KDS-DE 1,5 GR	4044211220860	10 ST

28517.4 KDS-Inlay 2 BK

##INVERSE##CONTA-CABLE



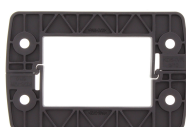
Seal, Mounting type: Plug in, Length x width: 20.3 mm, Max. cable diameter: 2 mm, IP 66, Colour: Black

Artikelnummer	Artikelbezeichnung	GTIN (EAN)	VPE
<u>28695.4</u>	KDS-DE 2 BK	4044211220877	10 ST



Inner locking frame, Length: 105 mm, Height: 11.5 mm, Colour: Black

Artikelnummer	Artikelbezeichnung	GTIN (EAN)	VPE
<u>28501.4</u>	KDS-IVR 6/10 BK	4044211210779	10 ST



Inner locking frame, Length: 105 mm, Height: 11.5 mm, Colour: Black

Artikelnummer	Artikelbezeichnung	GTIN (EAN)	VPE
<u>28501.4</u>	KDS-IVR 6/10 BK	4044211210779	10 ST



Inner locking frame, Length: 152 mm, Height: 11.5 mm, Colour: Black

Artikelnummer	Artikelbezeichnung	GTIN (EAN)	VPE
<u>28505.4</u>	KDS-IVR 10/24 BK	4044211210816	10 ST



Cable entry with foamed-in seal, Mounting type: Screws, Length: 153 mm, Width: 70 mm, IP 66, Colour: Black

Artikelnummer	Artikelbezeichnung	GTIN (EAN)	VPE
<u>28504.4</u>	KDS-SR 10/24 BK	4044211210809	1 ST



Cable entry with foamed-in seal, Mounting type: Screws, Length: 126 mm, Width: 70 mm, IP 66, Colour: Black

Artikelnummer	Artikelbezeichnung	GTIN (EAN)	VPE
<u>28502.4</u>	KDS-SR 8/16 BK	4044211210786	1 ST



Cable entry with foamed-in seal, Mounting type: Screws, Length: 126 mm, Width: 70 mm, IP 66, Colour: Black

Artikelnummer	Artikelbezeichnung	GTIN (EAN)	VPE
<u>28502.4</u>	KDS-SR 8/16 BK	4044211210786	1 ST

28517.4 KDS-Inlay 2 BK

##INVERSE##CONTA-CABLE



Cable entry with foamed-in seal, Mounting type: Screws, Length: 81 mm, Width: 70 mm, IP 66, Colour: Black

Artikelnummer	Artikelbezeichnung	GTIN (EAN)	VPE
28506.4	KDS-SR 1-4 BK	4044211210823	1 ST



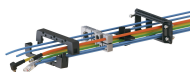
Cable entry with TPE seal, Mounting type: Screws, Length: 126 mm, Width: 64 mm, IP 66, Colour: Black

Artikelnummer	Artikelbezeichnung	GTIN (EAN)	VPE
28882.4	KDSI-SR 8/16 BK	4044211242091	1 ST



Cable entry with TPE seal, Mounting type: Screws, Length: 153 mm, Width: 64 mm, IP 66, Colour: Black

Artikelnummer	Artikelbezeichnung	GTIN (EAN)	VPE
28883.4	KDSI-SR 10/24 BK	4044211242107	1 ST



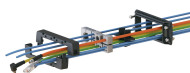
Cable entry with TPE seal, Mounting type: Screws, Length: 106 mm, Width: 64 mm, IP 66, Colour: Black

Artikelnummer	Artikelbezeichnung	GTIN (EAN)	VPE
28881.4	KDSI-SR 6/10 BK	4044211242084	1 ST



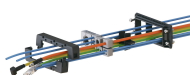
Cable entry set, IP66, Consisting of: 1xKDSI-SR 8/16, 2xKDS-Inlay 4

Artikelnummer	Artikelbezeichnung	GTIN (EAN)	VPE
28892.4	KDSI-SET 8/16 BK	4044211242176	1 ST



Cable entry with TPE seal, Mounting type: Screws, Length: 106 mm, Width: 64 mm, IP 66, Colour: Black

Artikelnummer	Artikelbezeichnung	GTIN (EAN)	VPE
28881.4	KDSI-SR 6/10 BK	4044211242084	1 ST



Cable entry with TPE seal, Mounting type: Screws, Length: 106 mm, Width: 64 mm, IP 66, Colour: Black

Artikelnummer	Artikelbezeichnung	GTIN (EAN)	VPE
28881.4	KDSI-SR 6/10 BK	4044211242084	1 ST