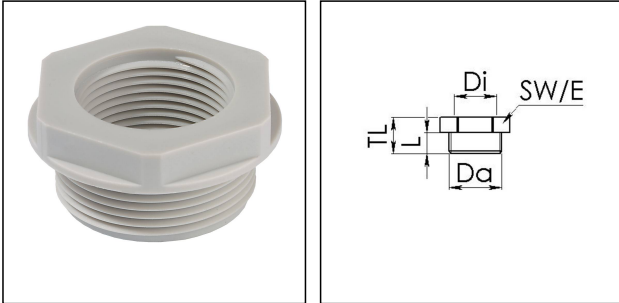


KRM 25/12 LG

Reduction adaptor, polyamide, RAL 7035, M25 / M12



Products may differ in size, colour and appearance to those shown. If you require further information or customisation, please contact us directly.



Material	Polyamide, fibre reinforced
Temp. range min	-40 °C
Temp. range max	100 °C
Glow wire test	650 °C
Thread type outer	M
Ø outer thread	25
Lead outer	1,5
Length screw-in thread L	10 mm
Thread type inner	M
Ø inner thread	12
Lead inner	1,5
Total length TL	17 mm
Key width SW	29 mm
Collar diameter (E)	32 mm
Product Color	RAL 7035
Order no. RAL 7035	10063580
Type	KRM 25/12 LG
Packing unit	100
EAN number	4007685635806
Tariff number	39269097
ETIM-Classification	EC000938

Recommended accessories

Your Contact:

WISKA Hoppmann GmbH

Kisdorfer Weg 28 · 24568 Kaltenkirchen · Germany

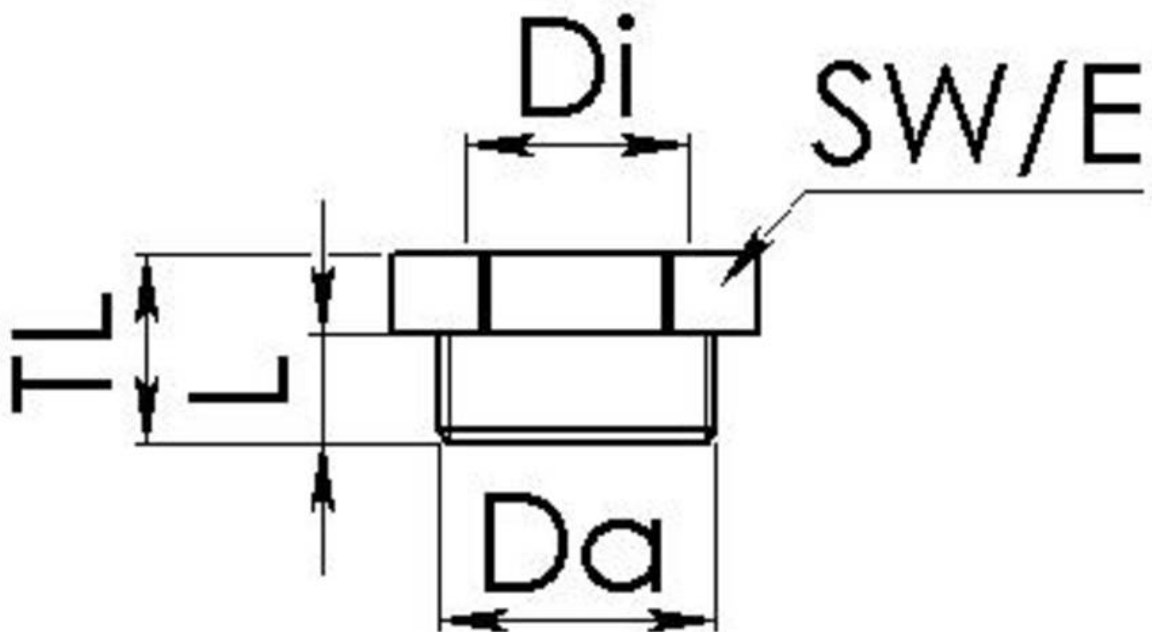
☎ +49-4191-508-0 · 📠 +49-4191-508-209

contact@wiska.de · www.wiska.com

EMUG 25 LG	10060773
EADR 25	10062804

10.12.2023

Your Contact:
WISKA Hoppmann GmbH
Kisdorfer Weg 28 · 24568 Kaltenkirchen · Germany
☎ +49-4191-508-0 · 📠 +49-4191-508-209
contact@wiska.de · www.wiska.com



Your Contact:

WISKA Hoppmann GmbH

Kisdorfer Weg 28 · 24568 Kaltenkirchen · Germany

☎ +49-4191-508-0 · 📠 +49-4191-508-209

contact@wiska.de · www.wiska.com