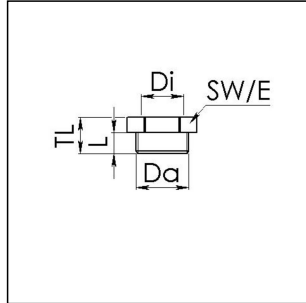


KRM 32/25 LG

Reduction adaptor, polyamide, RAL 7035, M32 / M25



Products may differ in size, colour and appearance to those shown. If you require further information or customisation, please contact us directly.



Material	Polyamide, fibre reinforced
Temp. range min	-40 °C
Temp. range max	100 °C
Glow wire test	650 °C
Thread type outer	M
Ø outer thread	32
Lead outer	1,5
Length screw-in thread L	12 mm
Thread type inner	M
Ø inner thread	25
Lead inner	1,5
Total length TL	19 mm
Key width SW	36 mm
Collar diameter (E)	40 mm
Product Color	RAL 7035
Order no. RAL 7035	10063585
Type	KRM 32/25 LG
Packing unit	50
EAN number	4007685635851
Tariff number	39269097
ETIM-Classification	EC000938

Recommended accessories

Your Contact:

WISKA Hoppmann GmbH

Kisdorfer Weg 28 · 24568 Kaltenkirchen · Germany

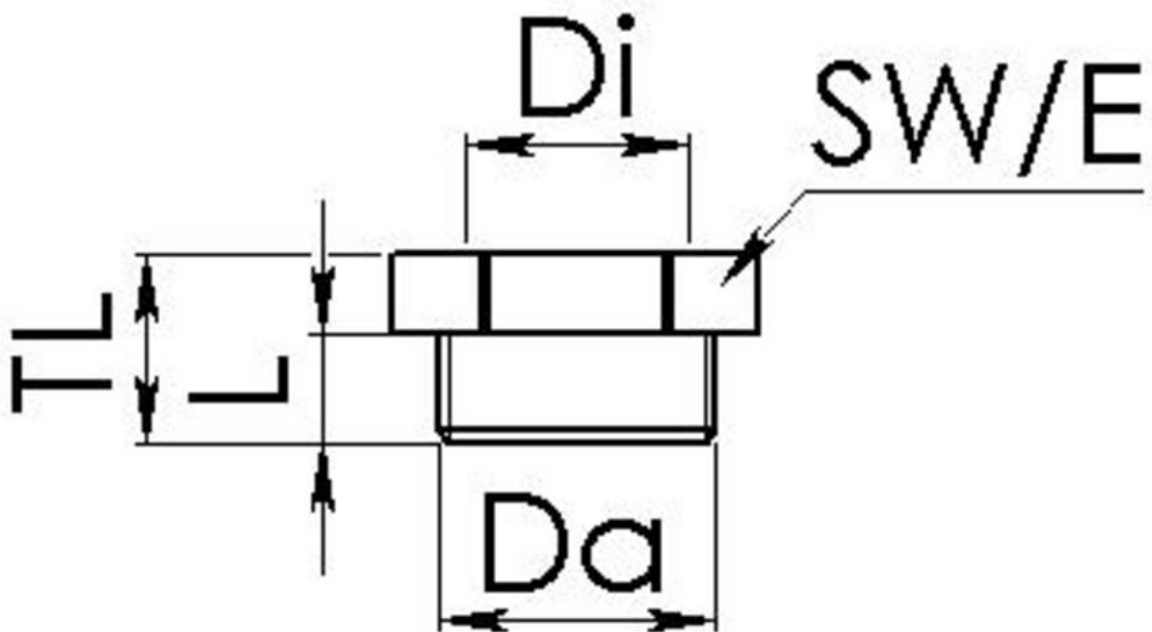
☎ +49-4191-508-0 · 📠 +49-4191-508-209

contact@wiska.de · www.wiska.com

EMUG 32 LG	10060774
EADR 32	10062805

10.12.2023

Your Contact:
WISKA Hoppmann GmbH
Kisdorfer Weg 28 · 24568 Kaltenkirchen · Germany
☎ +49-4191-508-0 · 📠 +49-4191-508-209
contact@wiska.de · www.wiska.com



Your Contact:

WISKA Hoppmann GmbH

Kisdorfer Weg 28 · 24568 Kaltenkirchen · Germany

☎ +49-4191-508-0 · 📠 +49-4191-508-209

contact@wiska.de · www.wiska.com