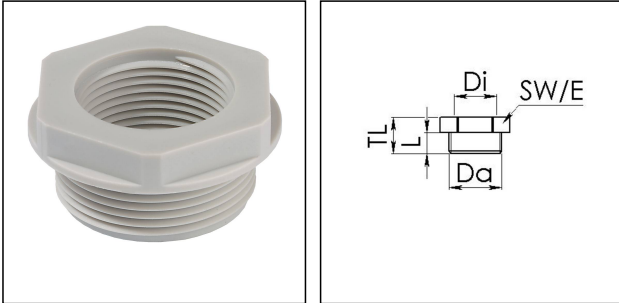


KRM 40/20 LG

Reduction adaptor, polyamide, RAL 7035, M40 / M20



Products may differ in size, colour and appearance to those shown. If you require further information or customisation, please contact us directly.



Material	Polyamide, fibre reinforced
Temp. range min	-40 °C
Temp. range max	100 °C
Glow wire test	650 °C
Thread type outer	M
Ø outer thread	40
Lead outer	1,5
Length screw-in thread L	12 mm
Thread type inner	M
Ø inner thread	20
Lead inner	1,5
Total length TL	19 mm
Key width SW	46 mm
Collar diameter (E)	51 mm
Product Color	RAL 7035
Order no. RAL 7035	10063586
Type	KRM 40/20 LG
Packing unit	25
EAN number	4007685635868
Tariff number	39269097
ETIM-Classification	EC000938

Recommended accessories

Your Contact:

WISKA Hoppmann GmbH

Kisdorfer Weg 28 · 24568 Kaltenkirchen · Germany

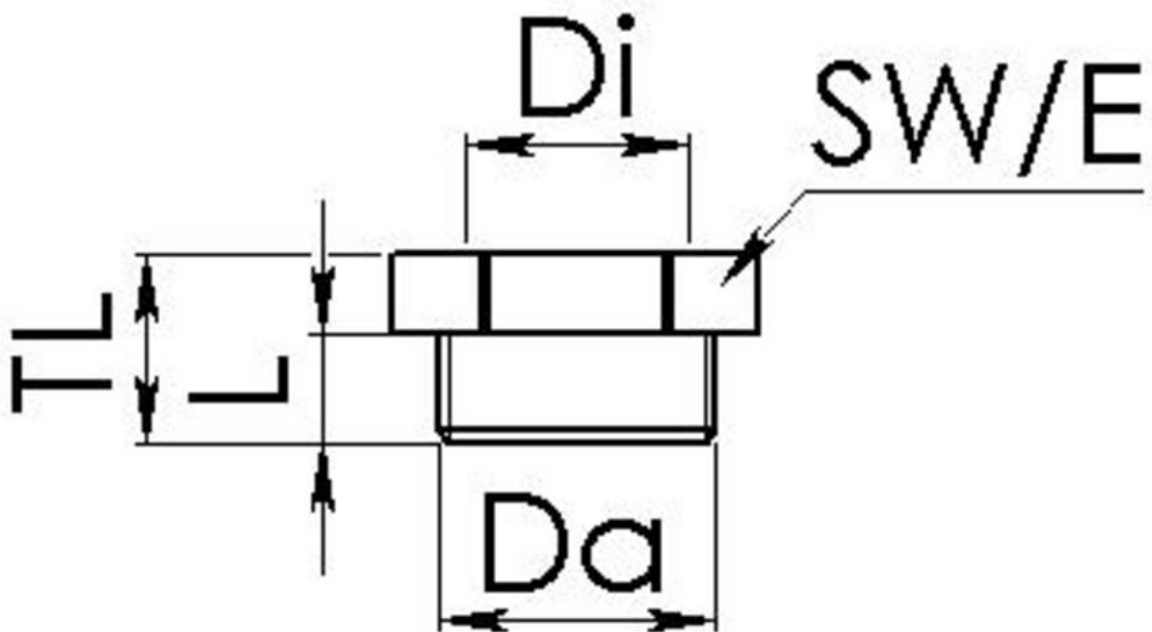
☎ +49-4191-508-0 · 📠 +49-4191-508-209

contact@wiska.de · www.wiska.com

EMUG 40 LG	10060775
EADR 40	10062806

10.12.2023

Your Contact:
WISKA Hoppmann GmbH
Kisdorfer Weg 28 · 24568 Kaltenkirchen · Germany
☎ +49-4191-508-0 · 📠 +49-4191-508-209
contact@wiska.de · www.wiska.com



Your Contact:

WISKA Hoppmann GmbH

Kisdorfer Weg 28 · 24568 Kaltenkirchen · Germany

☎ +49-4191-508-0 · 📠 +49-4191-508-209

contact@wiska.de · www.wiska.com