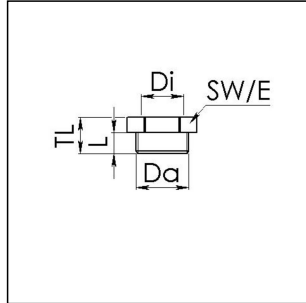


## KRM 50/25 LG

Reduction adaptor, polyamide, RAL 7035, M50 / M25



Products may differ in size, colour and appearance to those shown. If you require further information or customisation, please contact us directly.



<b>Material</b>	Polyamide, fibre reinforced
<b>Temp. range min</b>	-40 °C
<b>Temp. range max</b>	100 °C
<b>Glow wire test</b>	650 °C
<b>Thread type outer</b>	M
<b>Ø outer thread</b>	50
<b>Lead outer</b>	1,5
<b>Length screw-in thread L</b>	14 mm
<b>Thread type inner</b>	M
<b>Ø inner thread</b>	25
<b>Lead inner</b>	1,5
<b>Total length TL</b>	21 mm
<b>Key width SW</b>	55 mm
<b>Collar diameter (E)</b>	61 mm
<b>Product Color</b>	RAL 7035
<b>Order no. RAL 7035</b>	10063589
<b>Type</b>	KRM 50/25 LG
<b>Packing unit</b>	5
<b>EAN number</b>	4007685635899
<b>Tariff number</b>	39269097
<b>ETIM-Classification</b>	EC000938

### Recommended accessories

Your Contact:

WISKA Hoppmann GmbH

Kisdorfer Weg 28 · 24568 Kaltenkirchen · Germany

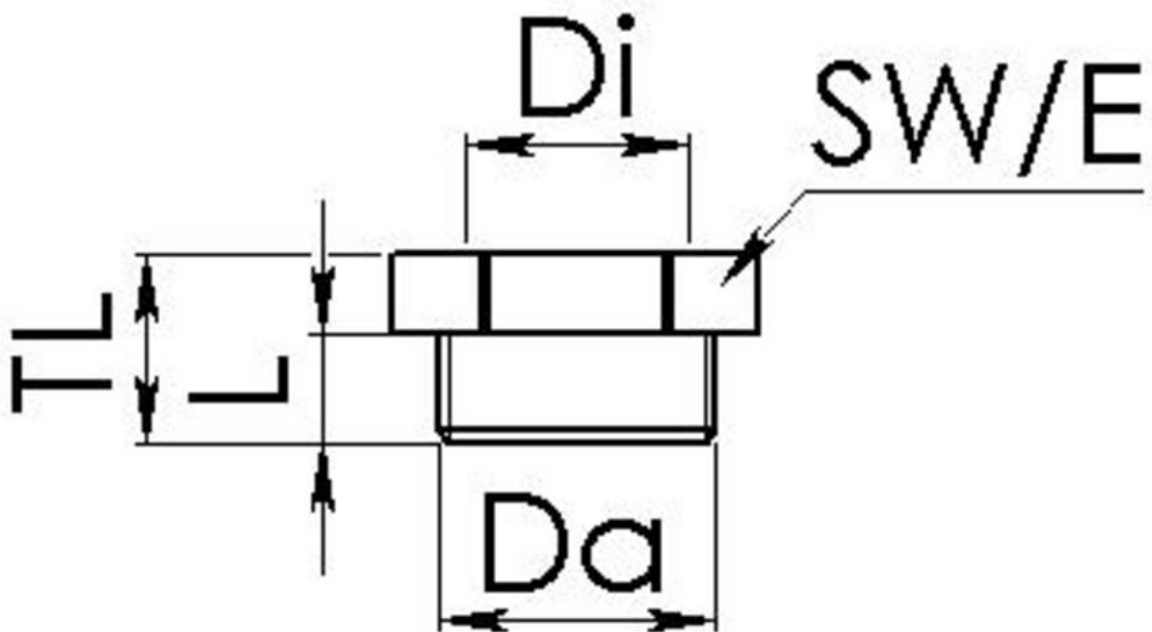
☎ +49-4191-508-0 · 📠 +49-4191-508-209

contact@wiska.de · www.wiska.com

<b>EMUG 50 LG</b>	10060776
<b>EADR 50</b>	10062807

10.12.2023

Your Contact:  
**WISKA Hoppmann GmbH**  
Kisdorfer Weg 28 · 24568 Kaltenkirchen · Germany  
☎ +49-4191-508-0 · 📠 +49-4191-508-209  
contact@wiska.de · www.wiska.com



Your Contact:

**WISKA Hoppmann GmbH**

Kisdorfer Weg 28 · 24568 Kaltenkirchen · Germany

☎ +49-4191-508-0 · 📠 +49-4191-508-209

contact@wiska.de · www.wiska.com