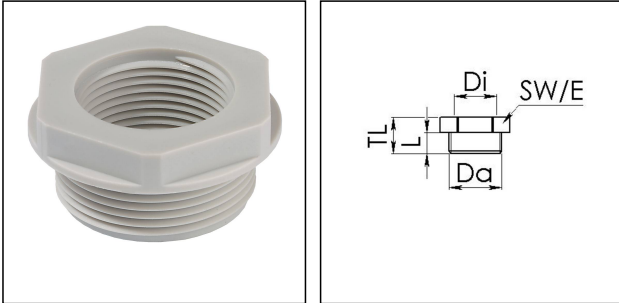


KRM 50/32 LG

Reduction adaptor, polyamide, RAL 7035, M50 / M32



Products may differ in size, colour and appearance to those shown. If you require further information or customisation, please contact us directly.



Material	Polyamide, fibre reinforced
Temp. range min	-40 °C
Temp. range max	100 °C
Glow wire test	650 °C
Thread type outer	M
Ø outer thread	50
Lead outer	1,5
Length screw-in thread L	14 mm
Thread type inner	M
Ø inner thread	32
Lead inner	1,5
Total length TL	21 mm
Key width SW	55 mm
Collar diameter (E)	61 mm
Product Color	RAL 7035
Order no. RAL 7035	10063590
Type	KRM 50/32 LG
Packing unit	5
EAN number	4007685635905
Tariff number	39269097
ETIM-Classification	EC000938

Recommended accessories

Your Contact:

WISKA Hoppmann GmbH

Kisdorfer Weg 28 · 24568 Kaltenkirchen · Germany

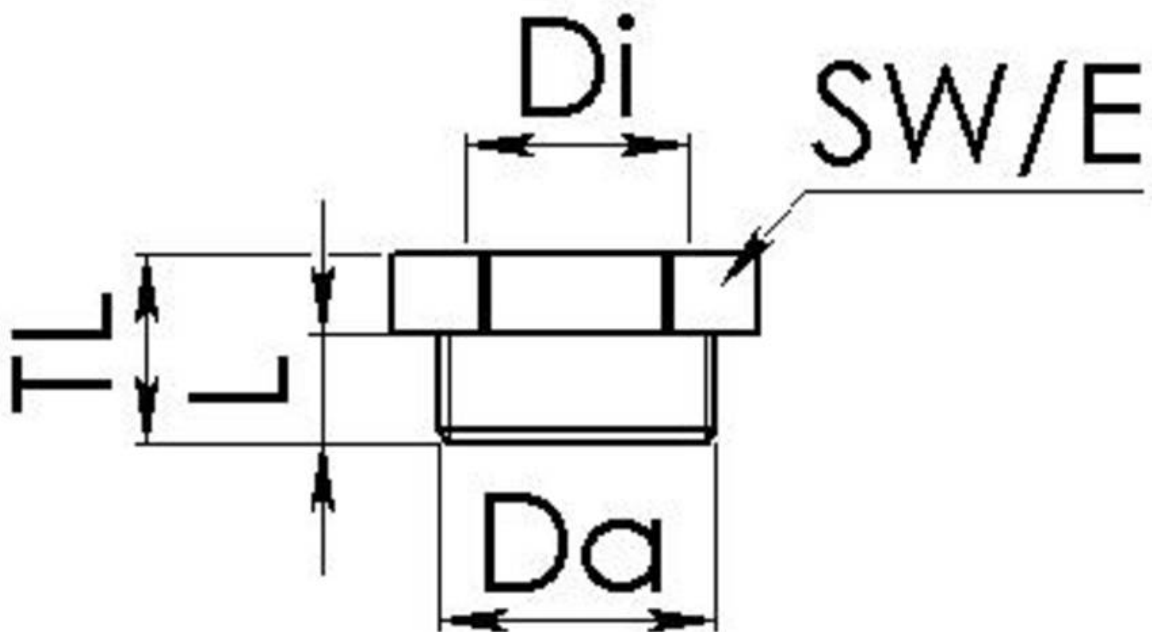
☎ +49-4191-508-0 · 📠 +49-4191-508-209

contact@wiska.de · www.wiska.com

EMUG 50 LG	10060776
EADR 50	10062807

11.12.2023

Your Contact:
WISKA Hoppmann GmbH
Kisdorfer Weg 28 · 24568 Kaltenkirchen · Germany
☎ +49-4191-508-0 · 📠 +49-4191-508-209
contact@wiska.de · www.wiska.com



Your Contact:

WISKA Hoppmann GmbH

Kisdorfer Weg 28 · 24568 Kaltenkirchen · Germany

☎ +49-4191-508-0 · 📠 +49-4191-508-209

contact@wiska.de · www.wiska.com