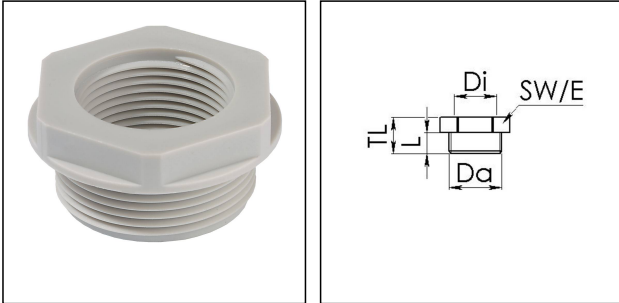


KRM 63/50 LG

Reduction adaptor, polyamide, RAL 7035, M63 / M50



Products may differ in size, colour and appearance to those shown. If you require further information or customisation, please contact us directly.



| | |
|---------------------------------|-----------------------------|
| Material | Polyamide, fibre reinforced |
| Temp. range min | -40 °C |
| Temp. range max | 100 °C |
| Glow wire test | 650 °C |
| Thread type outer | M |
| Ø outer thread | 63 |
| Lead outer | 1,5 |
| Length screw-in thread L | 15 mm |
| Thread type inner | M |
| Ø inner thread | 50 |
| Lead inner | 1,5 |
| Total length TL | 22 mm |
| Key width SW | 65 mm |
| Collar diameter (E) | 73 mm |
| Product Color | RAL 7035 |
| Order no. RAL 7035 | 10063594 |
| Type | KRM 63/50 LG |
| Packing unit | 5 |
| EAN number | 4007685635943 |
| Tariff number | 39269097 |
| ETIM-Classification | EC000938 |

Recommended accessories

Your Contact:

WISKA Hoppmann GmbH

Kisdorfer Weg 28 · 24568 Kaltenkirchen · Germany

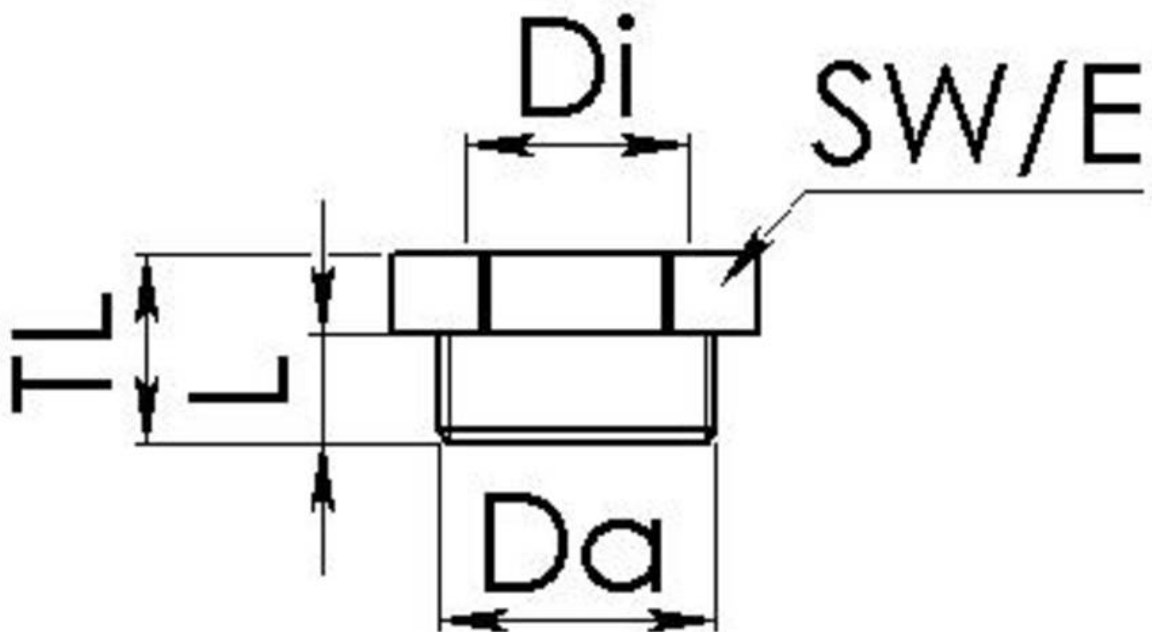
☎ +49-4191-508-0 · 📠 +49-4191-508-209

contact@wiska.de · www.wiska.com

| | |
|-------------------|----------|
| EMUG 63 LG | 10060777 |
| EADR 63 | 10062808 |

11.12.2023

Your Contact:
WISKA Hoppmann GmbH
Kisdorfer Weg 28 · 24568 Kaltenkirchen · Germany
☎ +49-4191-508-0 · 📠 +49-4191-508-209
contact@wiska.de · www.wiska.com



Your Contact:

WISKA Hoppmann GmbH

Kisdorfer Weg 28 · 24568 Kaltenkirchen · Germany

☎ +49-4191-508-0 · 📠 +49-4191-508-209

contact@wiska.de · www.wiska.com