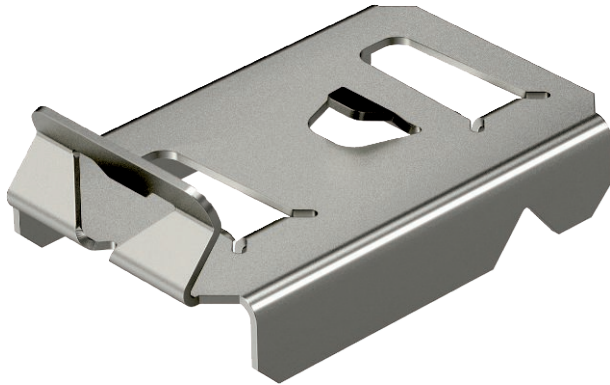


# Technical data sheet

## Hold-down clamp for barrier strip fastening in GRM

Item no. 6062282



Hold-down clamp for fastening barrier strips in mesh cable trays.

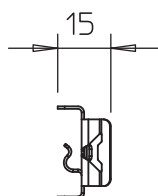
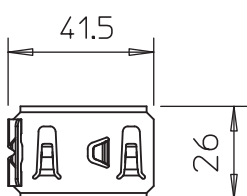


**A2** Stainless steel, rustproof 1.4310  
**2B** Bright, reworked

### Master data

Item no.	6062282
Type	KS GR A2
Description 1	Hold-down clamp - mesh cbl tr.
Description 2	for barrier strip fastening
Material	Stainless steel, grade 301
Material symbol	A2
Surface	Bright, reworked
Surface symbol	2B
Smallest sales unit (VG)	30,00 Piece
Weight	0,83 kg/100 pc.

### Technical data



Suitable for mesh cable tray	<input checked="" type="checkbox"/>
Suitable for cable ladder	<input type="checkbox"/>
Suitable for cable tray	<input type="checkbox"/>
Suitable for maintaining electrical function	<input type="checkbox"/>
Rustproof steel, pickled	<input type="checkbox"/>