

End plate, Width: 1.5 mm, Colour: Grey

RAL: Ähnlich 7035

Business data

Article number	<u>27100.6</u>
Article name	PAP 1,5/2A GR
GTIN (EAN)	4044211224295
Packaging unit	20
Quantity unit	PC
Weight per piece (not including packaging)	1.25 g
Weight per piece (including packaging)	1.26 g
Unit of weight	G
Prio-Article	27100.6
Product description	End plate

Technical data

Dimensions

Length	45 mm
Width	1.5 mm
Height	24 mm

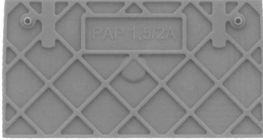
Materials

Material	Polyamide 6.6
Flammability class UL 94	V-0
Working temperature, min.	-40 °C
Working temperature, max.	120 °C

Environmental Product Compliance

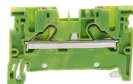
REACH Candidate Substance Note	No
--------------------------------	----

Media



Accessories

Terminal blocks



Protective earth terminal, Push-in connection, Mounting type: Mounting rail TS 35/7.5,
Rated cross-section: 1.5 mm², Width: 3.5 mm, Colour: Green-yellow

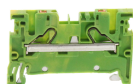
Article number	Article name	GTIN (EAN)	Packaging unit
<u>27001.2</u>	PSL 1,5/2A GNYE	4044211223687	50 ST



Feed-through terminal, Push-in connection, Mounting type: Mounting rail TS 35/7.5,
Rated cross-section: 1.5 mm², Width: 3.5 mm, Colour: Grey

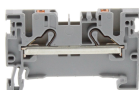
Article number	Article name	GTIN (EAN)	Packaging unit
<u>27000.6</u>	PRK 1,5/2A GR	4044211223670	50

##INVERSE##CONTA-CONNECT



Protective earth terminal, Push-in connection, Mounting type: Mounting rail TS 35/7.5,
Rated cross-section: 1.5 mm², Width: 3.5 mm, Colour: Green-yellow

Article number	Article name	GTIN (EAN)	Packaging unit
<u>27001.2</u>	PSL 1,5/2A GNYE	4044211223687	50 ST



Feed-through terminal, Push-in connection, Mounting type: Mounting rail TS 35/7.5,
Rated cross-section: 1.5 mm², Width: 3.5 mm, Colour: Grey

Article number	Article name	GTIN (EAN)	Packaging unit
<u>27000.6</u>	PRK 1,5/2A GR	4044211223670	50