

Insulated cross-connector, No. of poles: 10, Mounting type: Plug in, Width: 119.9 mm, Colour: Red

Business data

Article number	<u>27151.9</u>
Article name	PQI 4/20 RD
GTIN (EAN)	4044211225339
Packaging unit	5
Quantity unit	PC
Weight per piece (not including packaging)	18.6 g
Weight per piece (including packaging)	19.2 g
Unit of weight	G
Customs number	85389099
Country of origin	DE
Prio-Article	27151.9
Product description	Insulated cross-connector

Technical data

Dimensions

Length	4 mm
Width	119.9 mm
Height	19.4 mm
Pitch size	6.1 mm

Ratings

Max. voltage	800 V
Rated current	32 A
Current load, max.	32 A
Rated cross-section	4 mm ²
Contamination degree	3

Connection data

No. of poles	20
--------------	----

Materials

Insulation housing	Polyamide 6.6
Flammability class UL 94	V-0
Working temperature, min.	-40 °C
Working temperature, max.	120 °C

Further technical data

Mounting type	Plug in
Insulation available	✓
Touch protection is available	✓
Number of bridged terminals	20

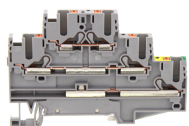
Environmental Product Compliance

REACH Candidate Substance Note	No
--------------------------------	----

Media

Accessories

##INVERSE##CONTA-CONNECT



Three-level initiator terminal |Multi-wire terminal, Push-in connection, Mounting type: Mounting rail TS 35/7.5, Rated cross-section: 2.5 mm², Width: 5.1 mm, Colour: Grey

Article number	Article name	GTIN (EAN)	Packaging unit
<u>27048.6</u>	PIKD 2,5/1PE/L/L GR	4044211227173	50 ST



Protective earth terminal, Push-in connection, Mounting type: Mounting rail TS 35/7.5, Rated cross-section: 4 mm², Width: 6.1 mm, Colour: Green-yellow

Article number	Article name	GTIN (EAN)	Packaging unit
<u>27013.2</u>	PSL 4/2A GNYE	4044211215804	50 ST



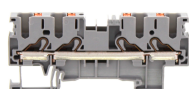
Protective earth terminal, Push-in connection, Mounting type: Mounting rail TS 35/7.5, Rated cross-section: 4 mm², Width: 6.1 mm, Colour: Green-yellow

Article number	Article name	GTIN (EAN)	Packaging unit
<u>27015.2</u>	PSL 4/3A GNYE	4044211215842	50 ST



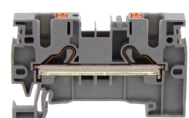
Protective earth terminal, Push-in connection, Mounting type: Mounting rail TS 35/7.5, Rated cross-section: 4 mm², Width: 6.1 mm, Colour: Green-yellow

Article number	Article name	GTIN (EAN)	Packaging unit
<u>27017.2</u>	PSL 4/4A GNYE	4044211215880	50 ST



Feed-through terminal, Push-in connection, Mounting type: Mounting rail TS 35/7.5, Rated cross-section: 4 mm², Width: 6.1 mm, Colour: Grey

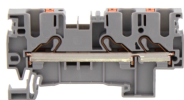
Article number	Article name	GTIN (EAN)	Packaging unit
<u>27016.6</u>	PRK 4/4A GR	4044211215873	50



Feed-through terminal, Push-in connection, Mounting type: Mounting rail TS 35/7.5, Rated cross-section: 4 mm², Width: 6.1 mm, Colour: Grey

Article number	Article name	GTIN (EAN)	Packaging unit
<u>27012.6</u>	PRK 4/2A GR	4044211215774	50

##INVERSE##CONTA-CONNECT



Feed-through terminal, Push-in connection, Mounting type: Mounting rail TS 35/7.5,
Rated cross-section: 4 mm², Width: 6.1 mm, Colour: Grey

Article number	Article name	GTIN (EAN)	Packaging unit
<u>27014.6</u>	PRK 4/3A GR	4044211215835	50

##INVERSE##CONTA-CONNECT
