

Cross-connector, No. of poles: 10, Mounting type: Can be screwed on, Width: 59.7 mm, Rated cross-section: 4 mm<sup>2</sup>, Colour: natural

### Business data

Article number	2022.0
Article name	Q 10
GTIN (EAN)	4044211048259
Packaging unit	10
Quantity unit	PC
Weight per piece (not including packaging)	28 g
Weight per piece (including packaging)	28.01 g
Unit of weight	G
Customs number	85389099
Country of origin	CZ
Product description	Cross-connector
Colour	Natural



### Technical data

#### Dimensions

Length	6 mm
Width	59.7 mm
Hole diameter	3.4 mm
Hole spacing (mid-point to mid-point)	6.1 mm
Pitch size	6 mm

#### Ratings

Voltage with partition, max.	800 V
Voltage without partition, max.	400 V
Rated current	27 A
Rated cross-section	4 mm <sup>2</sup>
Contamination degree	3

#### Connection data

No. of poles	10
Screw head	Slotted
Screw threading	M 3
Tightening torque, min.	0.5 Nm
Tightening torque, max.	1 Nm

#### Materials

Material	Copper
Surface	Nickel
Surface screw	Galvanized

#### Further technical data

Mounting type	Screwable
Number of bridged terminals	10

---

### Technical data

---

#### Environmental Product Compliance

---

REACH Conform	No
REACH Reference date	2023-06-14
REACH Candidate Substance Note	No
REACH CAS 1 Substance	LEAD
REACH CAS 1 Percent minimal	0.1 %
REACH CAS 1 Percent maximum	4 %
REACH CAS 1 Number	7439-92-1
RoHS Conform	yes
RoHS Exception rule	6c

---

---

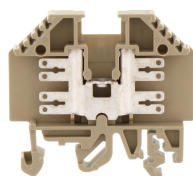
**Media**

---



### Accessories

#### ##INVERSE##CONTA-CONNECT



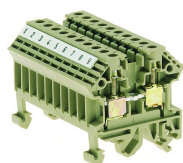
Feed-through terminal, Faston Spade connection, Mounting type: Mounting rail TS 35/7.5 and TS 32, Width: 6 mm, Colour: Beige

Article number	Article name	GTIN (EAN)	Packaging unit
<u>1014.2</u>	FF 2,5 BG	4044211003203	100



Feed-through terminal, Screw connection, Mounting type: Mounting rail TS 35/7.5, Rated cross-section: 4 mm<sup>2</sup>, Width: 6 mm, Colour: Black

Article number	Article name	GTIN (EAN)	Packaging unit
<u>1748.4</u>	RK 2,5-4 PA-G BK	4044211141134	100 ST



Feed-through terminal/block variant, Screw connection, Mounting type: Mounting rail TS 35/7.5 and TS 32, Rated cross-section: 4 mm<sup>2</sup>, Colour: Beige

Article number	Article name	GTIN (EAN)	Packaging unit
<u>1002.2</u>	KBL 2,5-4 BG	4044211000516	10 ST



Four-wire motor-connection block, Screw connection, Mounting type: Mounting rail TS 35/7.5 and TS 32, Rated cross-section: 4 mm<sup>2</sup>, Colour: Multi-coloured

Article number	Article name	GTIN (EAN)	Packaging unit
<u>1521.2</u>	VMAB 2,5-4	4044211046682	10 ST



Five-wire mains-connection block, Screw connection, Mounting type: Mounting rail TS 35/7.5 and TS 32, Rated cross-section: 4 mm<sup>2</sup>, Colour: Multi-coloured

Article number	Article name	GTIN (EAN)	Packaging unit
<u>1524.2</u>	FNAB 2,5-4	4044211046781	10 ST



Feed-through terminal/block variant, Screw connection, Mounting type: Mounting rail TS 35/7.5 and TS 32, Rated cross-section: 4 mm<sup>2</sup>, Colour: Beige

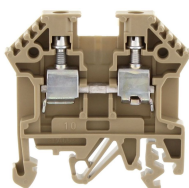
Article number	Article name	GTIN (EAN)	Packaging unit
<u>1002.2</u>	KBL 2,5-4 BG	4044211000516	10 ST

### ##INVERSE##CONTA-CONNECT



Feed-through terminal/block variant, Screw connection, Mounting type: Mounting rail TS 35/7.5 and TS 32, Rated cross-section: 4 mm<sup>2</sup>, Colour: Beige

Article number	Article name	GTIN (EAN)	Packaging unit
<u>1002.2</u>	KBL 2,5-4 BG	4044211000516	10 ST



Feed-through terminal, Screw connection, Mounting type: Mounting rail TS 35/7.5 and TS 32, Rated cross-section: 4 mm<sup>2</sup>, Width: 6 mm, Colour: Beige

Article number	Article name	GTIN (EAN)	Packaging unit
<u>1001.2</u>	RK 2,5-4 BG	4044211000240	100



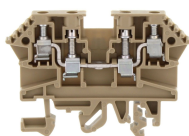
Feed-through terminal, Screw connection, Mounting type: Mounting rail TS 35/7.5, Rated cross-section: 10 mm<sup>2</sup>, Width: 8 mm, Colour: Black

Article number	Article name	GTIN (EAN)	Packaging unit
<u>1749.4</u>	RK 6-10 PA-G BK	4044211141141	100 ST



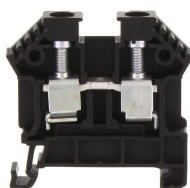
Feed-through terminal, Screw connection, Mounting type: Mounting rail TS 35/7.5, Rated cross-section: 10 mm<sup>2</sup>, Width: 8 mm, Colour: Black

Article number	Article name	GTIN (EAN)	Packaging unit
<u>1749.4</u>	RK 6-10 PA-G BK	4044211141141	100 ST



Feed-through terminal, Screw connection, Mounting type: Mounting rail TS 35/7.5 and TS 32, Rated cross-section: 4 mm<sup>2</sup>, Width: 6 mm, Colour: Beige

Article number	Article name	GTIN (EAN)	Packaging unit
<u>1211.2</u>	RK 2,5-4/ZRL BG	4044211028558	100



Feed-through terminal, Screw connection, Mounting type: Mounting rail TS 35/7.5, Rated cross-section: 10 mm<sup>2</sup>, Width: 8 mm, Colour: Black

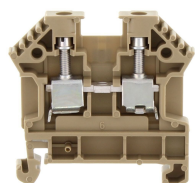
Article number	Article name	GTIN (EAN)	Packaging unit
<u>1749.4</u>	RK 6-10 PA-G BK	4044211141141	100 ST

### ##INVERSE##CONTA-CONNECT



Feed-through terminal, Screw connection, Mounting type: Mounting rail TS 35/7.5, Rated cross-section: 10 mm<sup>2</sup>, Width: 8 mm, Colour: Black

Article number	Article name	GTIN (EAN)	Packaging unit
<u>1749.4</u>	RK 6-10 PA-G BK	4044211141141	100 ST



Feed-through terminal, Screw connection, Mounting type: Mounting rail TS 35/7.5, Rated cross-section: 4 mm<sup>2</sup>, Width: 6 mm, Colour: Beige

Article number	Article name	GTIN (EAN)	Packaging unit
<u>1577.2</u>	RK 2,5-4/35 BG	4044211047566	100



Feed-through terminal, Screw connection, Mounting type: Mounting rail TS 35/7.5, Rated cross-section: 10 mm<sup>2</sup>, Width: 8 mm, Colour: Black

Article number	Article name	GTIN (EAN)	Packaging unit
<u>1749.4</u>	RK 6-10 PA-G BK	4044211141141	100 ST