



Industrial relay socket 11 pin

Screw connections

DIN-Rail mountable



Technical data

1. Function

Socket for mounting industrial relays series RT on DIN-Rail TS35. The use of retaining clips is possible.

2. Mechanical design

Self-extinguishing plastic housing.

Mounted on DIN-Rail TS 35 according to EN 60715

Mounting position: any

Shockproof terminal connection according to VBG4

IP rating IP20

Initial torque: 0.7Nm

Terminal capacity:

- 1 x 0.5 bis 2.5mm² with/without multicore cable end
- 1 x 4mm² without multicore cable end
- 2 x 0.5 bis 1.5mm² with/without multicore cable end
- 2 x 2.5mm² flexible without multicore cable end

3. Electrical data

Rated voltage: 300VAC

Overvoltage resistance: > 2500V

4. Ambient conditions

Ambient temperature: -25°C bis 70°C

Relative humidity: 15% bis 85%

5. Mounting

After fixing the socket on DIN rail the optional retaining clip has to be fixed on the socket. Next the relay can be placed and locked by the retaining clip.

6. Plug-in module

The use of optional plug-in module is not possible for this socket.

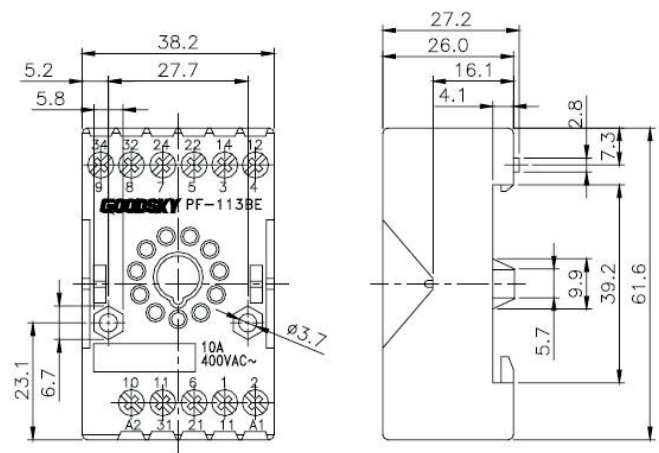
7. Retaining clip

Metal clip - HB/RT - Art.No. 180043 (VPE = 10pcs.)

8. Designation label

Labeling field integrated on socket.

9. Dimensions



10. Connections

