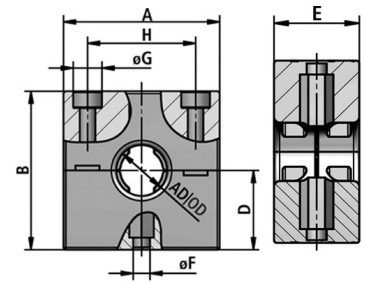


RQM2

Tubing clamp systems for light, medium and heavy duty applications, EN 45545-2 (HL3)

Heavy Tubing clamp for heavy duty applications, with fastening bore hole, ribbed fixing for strain relief, assembly of varying sizes in line feasible or on top of each other, applicable in combination with C-profile bars, EN 45545-2 (HL3)



Temperature: -40°C ... +120°C

Material: PA plastics

CHARACTERISTICS:

- Properties: fastening bore hole
- ribbed fixing for strain relief
- assembly of varying sizes joined in line or on top of each other
- for using in combination with C-profile bar

APPLICATIONS:

- Application: for heavy duty applications / machine and plant constructions / insulated electrical installations for application rules machine and plant constructions acc. to DIN EN 60204 / Railway Industrie



Characteristics	Unit	Value	Test
Mechanical characteristics			
Tensile E-Modulus	MPa		ISO 527-1/-2
Tensile strengt at yield	MPa	50-80	ISO 527-1/-2
Notched impact strength	kJ/m2		ISO 179/1eA
Thermal characteristics			
Temperature range	°C	-40°C ... +120°C	
Flame characteristics			
Free of halogen and phosphor		yes	DIN 53474
Flame class		V2	UL 94
Light emitting filament check	°C	850	
Oxygen index	%	>30	ISO 4589-2
Flammability class			DIN 5510-2
Requirements for fire behaviour		HL3	EN 45545-2
Material requirements R22 / R23			EN 45545-2
Chemical characteristics			
Resistance to fuels, mineral oils, fats, alkalises, acids and bases		excellent	
Fire performance NFPA 130			
Flammability		compliant	ASTM E 162
Smoke density		compliant	ASTM E 662
Smoke emission toxicity		compliant	Bombardier SMP 800-C



FLEXA No.	Colour	OD [mm]	A [mm]	B [mm]	D [mm]	E [mm]	Ø G [mm]	H [mm]	Weight [kg/100]	PU [pcs.]
15020008201	Black	2 x 42,5	126,0	66,0	33,0	30,0	8,5	106,0	10,900	10
15020008206	Black	2 x 54,5	151,0	66,0	33,0	30,0	8,5	132,0	12,000	5

Recommendations for any areas of applications, products, or product combinations are issued to the best of FLEXA's knowledge and experience. The user is requested to check applicability of FLEXA products to specific applications and purposes prior to the use of the particular products. All documentation, illustrations, and charts published are subject to copyright and must not be copied, changed, used, or modified. Technical drawings, certificates, authorizations, and results by the FLEXA lab will be provided upon request. FLEXA will not be held liable for typographical or other errors and incorrect drawings. Technical modifications are subject to change without prior notice.