

# Pressure Probes

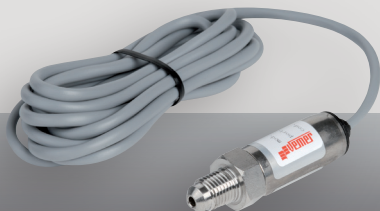
## SPK-10

### SPK-10 length 1.5 mt

Sensor series that provide a current signal and may detect the pressure value. The probe may be remote controlled up to a maximum of 100 m.

Signal transmitted: mA

- Sensor type: active, output  $4 \div 20$  mA
- Power supply:  $8 \div 28$  V DC
- Operative range:  $-0.5 \div 7$  bars
- Cable length: 1.5 m;  
brown wire = power supply (+V)  
white wire = signal output (OUT)
- To extend the probe cable use a shielded cable with a section of the single leads not lower than  $1.5 \text{ mm}^2$   
Furthermore, we advise not placing the probe leads near the power leads or the command cables of the remote control switches
- Connection: 1/4" SAE (male), 7/16" 20 UNF



Code	Model
VN871000	SPK-10

## GENERAL CHARACTERISTICS

Linearity	typical	$\pm 0.04$ bar; max $\pm 0.1$ bar
Stability	typical	$\pm 0.02$ bar; max $\pm 0.04$ bar
Signal at output	mA	$4 \div 20$
Temperature of standard work	$^{\circ}\text{C}$	$-25 \div +80$
Degree of protection	IP	65
Max. working temperature	$^{\circ}\text{C}$	$-40 \div +100$

## DIMENSIONS (mm)

