



Insulated cross-connector, No. of poles: 2, Mounting type: Plug in, Width: 26.5 mm, Rated cross-section: 35 mm<sup>2</sup>, Colour: Yellow

**RAL:** 1026

### Business data

Article number	17252.8
Article name	SQI 35/2 YE
GTIN (EAN)	4044211186807
Packaging unit	20
Quantity unit	PC
Weight per piece (not including packaging)	14 g
Weight per piece (including packaging)	14.2 g
Unit of weight	G
Customs number	85389099
Country of origin	DE
Product description	Insulated cross-connector
Colour	Yellow

### Technical data

#### Dimensions

Length	6.2 mm
Width	26.5 mm
Height	34.1 mm
Pitch size	16 mm

#### Ratings

Max. voltage	1000 V
Rated current	101 A
Current load, max.	101 A
Rated cross-section	35 mm <sup>2</sup>
Contamination degree	2

#### Connection data

No. of poles	2
--------------	---

#### Materials

Material	Bronze
Surface	Tin-plated
Insulation housing	Polyamide 6.6
Flammability class UL 94	V-2
Working temperature, min.	-40 °C
Working temperature, max.	105 °C

#### Further technical data

Mounting type	Plug in
Insulation available	✓
Touch protection is available	✓
Number of bridged terminals	2

#### Environmental Product Compliance

REACH Conform	yes
REACH Reference date	2023-06-14
REACH Candidate Substance Note	No
RoHS Conform	yes

# Data sheet

17252.8 SQI 35/2 YE



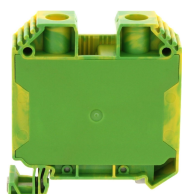
---

Media

---

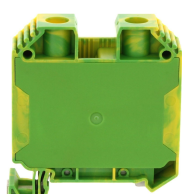
### Accessories

#### ##INVERSE##CONTA-CONNECT



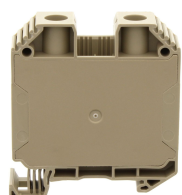
Protective earth terminal, Screw connection, Mounting type: Mounting rail TS 35/7.5, Rated cross-section: 35 mm<sup>2</sup>, Width: 16.1 mm, Colour: Green-yellow

Article number	Article name	GTIN (EAN)	Packaging unit
<u>17147.2</u>	SSL 35/2A/IS GNYE	4044211186678	20 ST



Protective earth terminal, Screw connection, Mounting type: Mounting rail TS 35/7.5, Rated cross-section: 35 mm<sup>2</sup>, Width: 16.1 mm, Colour: Green-yellow

Article number	Article name	GTIN (EAN)	Packaging unit
<u>17145.2</u>	SSL 35/2A GNYE	4044211186661	20 ST



Feed-through terminal, Screw connection, Mounting type: Mounting rail TS 35/7.5, Rated cross-section: 35 mm<sup>2</sup>, Width: 16.1 mm, Colour: Beige

Article number	Article name	GTIN (EAN)	Packaging unit
<u>17141.2</u>	SRK 35/2A/Z BG	4044211186630	20 ST



Feed-through terminal, Screw connection, Mounting type: Mounting rail TS 35/7.5, Rated cross-section: 35 mm<sup>2</sup>, Width: 16.1 mm, Colour: Beige

Article number	Article name	GTIN (EAN)	Packaging unit
<u>17143.2</u>	SRK 35/2A/Z/IS BG	4044211186654	20 ST



Feed-through terminal, Screw connection, Mounting type: Mounting rail TS 35/7.5, Rated cross-section: 35 mm<sup>2</sup>, Width: 16.1 mm, Colour: Beige

Article number	Article name	GTIN (EAN)	Packaging unit
<u>17140.2</u>	SRK 35/2A BG	4044211186616	20



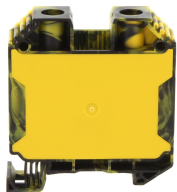
Feed-through terminal, Screw connection, Mounting type: Mounting rail TS 35/7.5, Rated cross-section: 35 mm<sup>2</sup>, Width: 16.1 mm, Colour: Beige

Article number	Article name	GTIN (EAN)	Packaging unit
<u>17142.2</u>	SRK 35/2A/IS BG	4044211186647	20

---

### ##INVERSE##CONTA-CONNECT

---



Feed-through terminal, Screw connection, Mounting type: Mounting rail TS 35/7.5, Rated cross-section: 35 mm<sup>2</sup>, Width: 16.1 mm, Colour: Black-yellow

Article number	Article name	GTIN (EAN)	Packaging unit
<u>17144.2</u>	SRK 35/2A/PE BKYE	4044211199722	20 ST

---