

Data sheet

1742.0 SVB 175 LG



Screw-distributor block, Screw connection, Mounting type: Mounting rail TS 35/7.5 and mounting surface, Rated cross-section of input: 70 mm², Rated cross-section of output: 16 mm², Colour: Light grey

RAL: 9018

Business data

Article number	<u>1742.0</u>
Article name	SVB 175 LG
GTIN (EAN)	4044211143497
Packaging unit	1
Quantity unit	PC
Weight per piece (not including packaging)	221 g
Weight per piece (including packaging)	231.6 g
Unit of weight	G
Customs number	85369010
Country of origin	FR
Product description	Screw-type distribution block
Colour	Light grey

Data sheet

1742.0 SVB 175 LG

Technical data

Dimensions

Length	71 mm
Width	45 mm
Height	43 mm
Height TS 35/7.5	46 mm

Ratings

Rated voltage AC	1000 V
Rated voltage DC	1500 V
Rated current Cu	175 A
Input: rated cross section	70 mm ²
Output: rated cross section	16 mm ²
Rated impulse voltage	2,5 kV
Overvoltage category	III
Contamination degree	3

Technical data

Connection data

Connection principle	Screw connection
Connections	11
Number of inputs	1
Number of outputs	10
Input: wire cross-section rigid, min.	16 mm ²
Input: wire cross-section rigid, max.	70 mm ²
Input: wire cross-section stranded, min.	16 mm ²
Input: wire cross-section stranded, max.	70 mm ²
Input: wire cross-section stranded, with wire-endferrules, min.	16 mm ²
Input: wire cross-section stranded, with wire-endferrules, max.	70 mm ²
Input: wire cross-section rigid AWG, min.	8
Input: wire cross-section rigid AWG, max.	2/0
Input: wire cross-section stranded AWG, min.	8
Input: wire cross-section stranded AWG, max.	2/0
Input: wire cross-section stranded, with wire-endferrules AWG, min.	8
Input: wire cross-section stranded, with wire-endferrules AWG, max.	2/0
Input: diameter	12 mm
Input: stripping length	16 mm
Input: screw head	Inner hex (Allen)
Input: screw threading	M 10
Input: torque, min.	6 Nm
Input: torque, max.	10 Nm
Output: wire cross-section rigid, min.	2.5 mm ²
Output: wire cross-section rigid, max.	16 mm ²
Output: wire cross-section stranded, min.	2.5 mm ²
Output: wire cross-section stranded, max.	16 mm ²
Output: wire cross-section stranded, with wire-end ferrules, min.	2.5 mm ²
Output: wire cross-section stranded, with wire-end ferrules, max.	16 mm ²
Output: wire cross-section rigid AWG, min.	14
Output: wire cross-section rigid AWG, max.	4
Output: wire cross-section stranded AWG, min.	14
Output: wire cross-section stranded AWG, max.	4
Output: wire cross-section stranded, with wire-end ferrules AWG, min.	14
Output: wire cross-section stranded, with wire-end ferrules AWG, max.	4
Output: diameter	6.5 mm
Output: stripping length	12 mm
Output: screw head	Inner hex (Allen)

Technical data

Materials

Insulation housing	Polyamide 6.6
Flammability class UL 94	V-0
Working temperature, min.	-40 °C
Working temperature, max.	120 °C

Further technical data

Mounting type	Mounting rail TS 35/7.5 and mounting surface
Short-circuit current resistance IPK (peak value)	30 kA
Short-circuit current resistance ICW over 1 s	11 kA
SCCR rating	100
Req. Series fuse class J	125 A

Environmental Product Compliance

REACH Conform	No
REACH Reference date	2023-06-14
REACH Candidate Substance Note	No
REACH CAS 1 Substance	LEAD
REACH CAS 1 Percent minimal	0.1 %
REACH CAS 1 Percent maximum	4 %
REACH CAS 1 Number	7439-92-1
RoHS Conform	yes
RoHS Exception rule	6c

Approvals

Standards and regulations

EAC approval	TR ZU 004/2011
EAC approval granted	yes

cUL Recognized

cUL approval	C22.2 No 158
cUL Usegroup B: rated voltage	600 V
cUL Usegroup B: rated current	175 A
cUL Usegroup C: rated voltage	600 V
cUL Usegroup C: rated current	175 A
cUL input: wire cross-section AWG, min.	8
cUL input: wire cross-section AWG, max.	2/0
cUL output: wire cross-section AWG, min.	14
cUL output: wire cross-section AWG, max.	4
cUL torque input	4 Nm
cUL torque output	2 Nm
cUL wire material	Cu
cUL Recognized	1

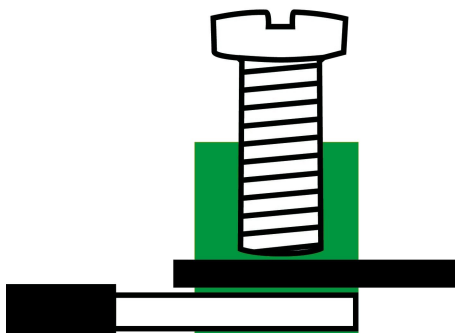
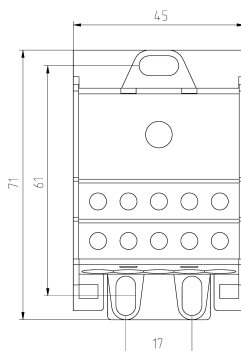
UL Recognized

UL approval	UL 1059
UL Usegroup B: rated voltage	600 V
UL Usegroup B: rated current	175 A
UL Usegroup C: rated voltage	600 V
UL Usegroup C: rated current	175 A
UL input: wire cross-section AWG, min.	8
UL input: wire cross-section AWG, max.	2/0
UL output: wire cross-section AWG, min.	14
UL output: wire cross-section AWG, max.	4
UL torque input	35.5 Lb In.
UL torque output	17.5 Lb In.
UL wire material	Cu
UL factory wiring	1
UL field wiring	1
UL Recognized	1

Data sheet

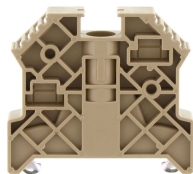
1742.0 SVB 175 LG

Media



Accessories

End stop



End stop, Mounting type: Mounting rail TS 35/7.5, Width: 9.5 mm, Colour: Beige

Article number	Article name	GTIN (EAN)	Packaging unit
<u>2828.0</u>	ES 35/K/ST BG	4044211055547	50
