

Technical data sheet

TP wall and ceiling bracket

Item no. 6365906



TP wall and ceiling bracket with clamping lugs for screwless mesh cable tray fastening.

If the wall and ceiling bracket is fastened directly to the wall or ceiling, then, for reasons of stability, always use the spacer, type DS 4.

Max. side height of the cable support system 60 mm.



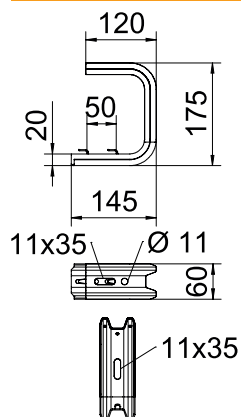
St Steel

FS Strip galvanised

Master data

Item no.	6365906
Type	TPDG 145 FS
Description 1	Wall and ceiling bracket
Description 2	for mesh cable tray
Dimension	B145mm
Material	Steel
Material symbol	St
Surface	Strip galvanised
Surface to DIN	DIN EN 10346
Surface symbol	FS
Smallest sales unit (VG)	6 Piece
Weight	52,00 kg/100 pc.

Technical data



Width	145,00 mm
Dimension B	145,00 mm
Dimension L	50,00 mm
Version	Suspension bracket (C clamp)
F in ceiling	1,30 kN
F in kN wall	1,40 kN
for width	100,00 - 100,00 mm
Suitable for tray/ladder width	100,00 mm
Suitable for maintaining electrical function	<input type="checkbox"/>
Suitable for cable tray	<input type="checkbox"/>
Suitable for cable ladder	<input type="checkbox"/>
Suitable for mesh cable tray	<input checked="" type="checkbox"/>

Appr. load:

Anchor, approved F 1.65 | 1,65 kN

Technical data sheet

TP wall and ceiling bracket

Item no. 6365906



Technical data

Appr. load:

Anchor, approved F 3.57 | 3,57 kN

Technical data sheet

TP wall and ceiling bracket

Item no. 6365906



Technical data

Appr. load:

Technical data sheet

TP wall and ceiling bracket

Item no. 6365906



Technical data

Appr. load: