

# Technical data sheet

## TPSA TP support/wall and support bracket

Item no. 6364101



TP support/bracket for fastening to horizontal concrete ceilings and walls.

If the profile is fastened directly to the ceiling or the profile is screwed together as head reinforcement, then, for reasons of stability, always use the spacer, type DS 4.

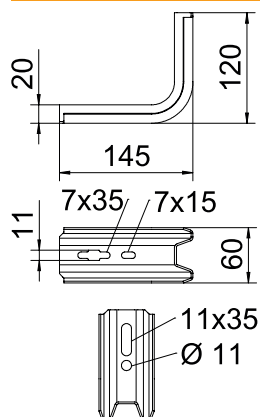


- St** Steel
- FS** Strip galvanised

### Master data

Item no.	6364101
Type	TPSA 145 FS
Description 1	TP wall and support bracket
Description 2	use as support and bracket
Dimension	B145mm
Material	Steel
Material symbol	St
Surface	Strip galvanised
Surface to DIN	DIN EN 10346
Surface symbol	FS
Smallest sales unit (VG)	1 Piece
Weight	32,30 kg/100 pc.

### Technical data



Length	145,00 mm
Width	145,00 mm
Dimension B	145,00 mm
Dimension H	120,00 mm
Dimension L	145,00 mm
Dimension value	20 x 60 x 2
Version	S profile
Version	Wall and support bracket
F in kN for width	1,50 kN / 100,00 mm
Suitable for maintaining electrical function	<input type="checkbox"/>
Rustproof steel, pickled	<input type="checkbox"/>

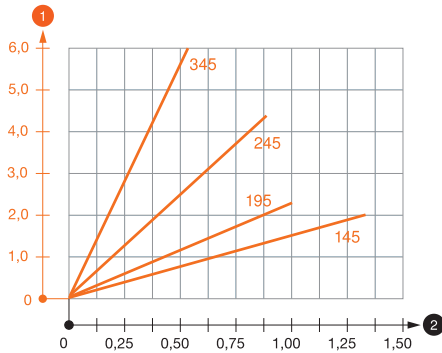
# Technical data sheet

## TPSA TP support/wall and support bracket

Item no. 6364101



### Load charts



### Load diagram, bracket TPSA

- 1 Bending of the bracket tip at permitted bracket load
- 2 Permitted bracket load in kN without man load
- Load curve with bracket lengths in mm

### Characteristic anchor load values for TP bracket

Wall fastening					
		Max. load [kN]			
		Bracket width [mm]			
Anchor type		145	195	245	345
BZ-U 8-30-41/95		1,00	1,30	0,70	2,40
BZ-U 10-30-50/110		1,50	1,00	0,90	0,55

### Characteristic anchor load values for TP bracket

T1	Wall fastening				
T2		Max. load [kN]			
T3		Bracket width [mm]			
T4	Anchor type	145	195	245	345
	BZ-U 8-30-41/95	1	1,3	0,7	2,4
	BZ-U 10-30-50/110	1,5	1	0,9	0,55