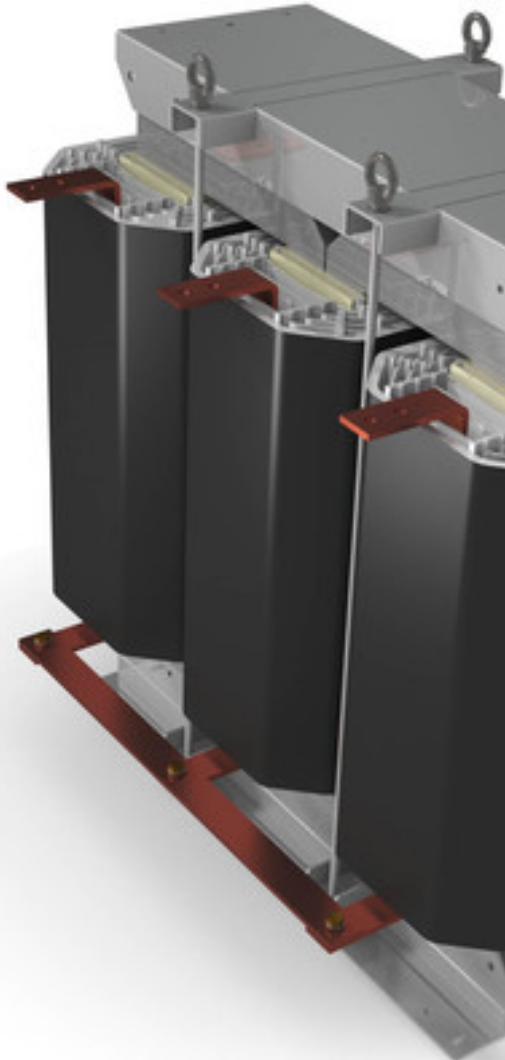


# Isolating transformer TT3-A125-4040-0



Picture shows TT3-A630-4040-0

## Advantages

Safe galvanic isolation

Very good corrosion protection and low noise thanks to BLOCK IMPEX vacuum impregnation

Very good discharging of thermal losses by means of optimally arranged cooling channels within the coils

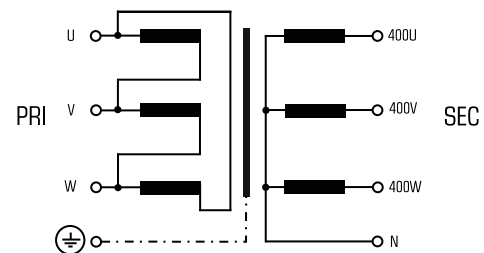
Integrated crane eyes

If desired, the transformers can be realised in individual voltages

## Applications

Isolating transformer for the safe electrical isolation of the input and output sides. The transformer may be used to set up protective separation as a protective measure in accordance with VDE 0100.

## Sample application



## Standards

Isolating transformer  
to: EN 61558 part 1 with part 2-4, UL 1561, CSA 22.2

## Approvals



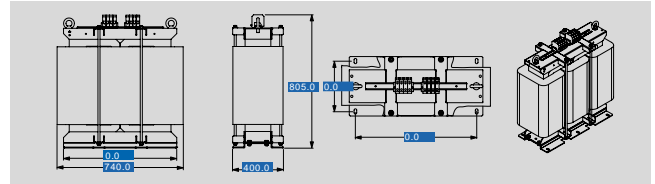
Insulationsystem only (216803)



# Isolating transformer TT3-A125-4040-0

Electrical data	
<b>Type</b> TT3-A125-4040-0	
<b>Input</b>	
Rated input voltage	3 x 400 Vac
Rated frequency	50 - 60 Hz
<b>Output</b>	
Rated output voltage	3 x 400 Vac
Rated Power	125,000 VA
Output rated current	3 x 180.4 A
Short circuit voltage	4,4 %
Vector group	Dyn 5
<b>Environment</b>	
Ambient temperature max.	40 °C
<b>Safety and protection</b>	
Insulation class	F
Protection index	IP 00
Type	Open type
Safety class (prepared)	I
Short circuit strength	non-short-circuit proof
<b>Order numbers</b>	
Recommended enclosure	BGE-115
<b>Order Number</b>	<b>TT3-A125-4040-0</b>

Mechanical data	
<b>Type</b> TT3-A125-4040-0	
<b>Terminal and mounting</b>	
Terminals	Screw-type terminal 70 mm <sup>2</sup>
Fixing method	Fixing rail
Terminals Input	Screw clamp, 70 mm <sup>2</sup>
Terminals Output	Screw clamp, 70 mm <sup>2</sup>
Terminals PE	Screw-type terminal, 70 mm <sup>2</sup>
<b>Measures and weights</b>	
Core type	3UC 594/175
Weight	410.00 kg



Subject to change.