

Current transformers

TU 20

Series of bypass bar amperometric transformers for instruments in alternating current with transformation ratio $x/5A$ or $x/1A$ and DIN rail or panel mounting (through the supplied supports).

- Bar passage: 15-20 mm
- Cable passage: $\varnothing 16$ mm
- Double terminal for secondary circuit
- Opening (hole) for cable or bar (primary) passage



BYPASS BAR

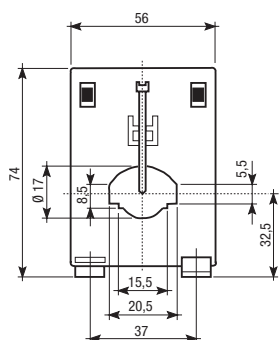
GENERAL CHARACTERISTICS

Test voltage (1 min)	kV	3
Frequency	Hz	50 / 60
Safety factor	FS	<5
Case		insulated
Max rated voltage	V	720
Short-time thermal current	A	1.2 I _n
Operating temperature	°C	-10 ÷ +50
Class		1 3
Nominal power VA	50/5 A	0.5 1
	60/5 A	1 2
	75/5 A	1.5 2.5
	100/5 A	2.5 3.75
	125/5 A	3.75 5
	50/1 A	0.5 1

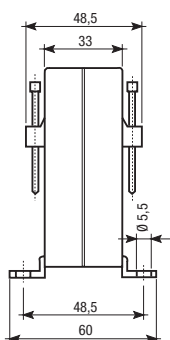


DIMENSIONS (mm)

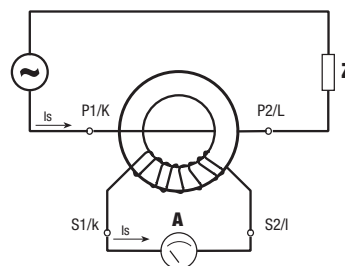
Front view



Side view



CONNECTION DIAGRAM



When connecting the amperometric transformers it is important to respect the directions of the current.
 Primary: from P1/K to P2/L
 Secondary: from S1/k to S2/l

Notes: the capacity of the amperometric transformer must correspond to the full scale of the instrument.

Code	Model	Description	Capacity
VM700200	TU 20	Bypass bar current transformer	50/5 A
VM700221	TU 20	Bypass bar current transformer	50/1 A
VM701000	TU 20	Bypass bar current transformer	60/5 A
VM702800	TU 20	Bypass bar current transformer	75/5 A
VM703600	TU 20	Bypass bar current transformer	100/5 A
VM704400	TU 20	Bypass bar current transformer	125/5 A