



Connecting sleeve, Colour: Orange

Business data

Article number	<u>2874.3</u>
Article name	VBS 3/10 OG
GTIN (EAN)	4044211055998
Packaging unit	20
Quantity unit	PC
Weight per piece (not including packaging)	0.6 g
Weight per piece (including packaging)	0.62 g
Unit of weight	G
Customs number	85389099
Country of origin	DE
Product description	Connecting sleeve
Colour	Orange

Technical data

Dimensions

Width	24 mm
-------	-------

Materials

Insulation housing	Polyamide 6.6
--------------------	---------------

Flammability class UL 94	V-2
--------------------------	-----

Working temperature, min.	-40 °C
---------------------------	--------

Working temperature, max.	105 °C
---------------------------	--------

Environmental Product Compliance

REACH Conform	yes
---------------	-----

REACH Reference date	2023-06-14
----------------------	------------

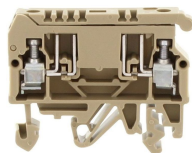
REACH Candidate Substance Note	No
--------------------------------	----

RoHS Conform	yes
--------------	-----

Media

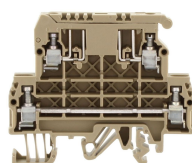
Accessories

Terminal blocks



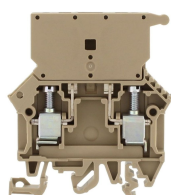
Fuse-disconnect terminal, Screw connection, Mounting type:Mounting rail TS 35/7.5 and TS 32, Rated cross-section: 4 mm², Width: 8 mm, Colour: Beige

Article number	Article name	GTIN (EAN)	Packaging unit
<u>1078.2</u>	STK 2 BG	4044211013745	100



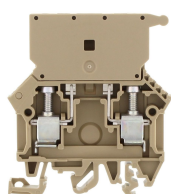
Fuse-disconnect terminal, Screw connection, Mounting type:Mounting rail TS 35/7.5 and TS 32, Rated cross-section: 4 mm², Width: 8 mm, Colour: Beige

Article number	Article name	GTIN (EAN)	Packaging unit
<u>1079.2</u>	STKD 1 BG	4044211013905	50



Fused terminal with disconnect plug, Screw connection, Mounting type:Mounting rail TS 35/7.5 and TS 32, Rated cross-section: 10 mm², Width: 8 mm, Colour: Beige

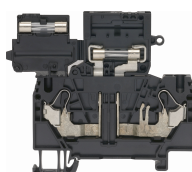
Article number	Article name	GTIN (EAN)	Packaging unit
<u>17042.2</u>	SIK 10/ST BG	4044211155797	25



Fuse-disconnect terminal, Screw connection, Mounting type:Mounting rail TS 35/7.5 and TS 32, Rated cross-section: 10 mm², Width: 8 mm, Colour: Beige

Article number	Article name	GTIN (EAN)	Packaging unit
<u>1101.2</u>	SIK 10 BG	4044211016388	50

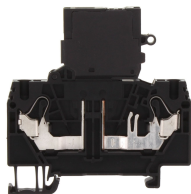
##INVERSE##CONTA-CONNECT



Fuse-disconnect terminal, Push-in connection, Mounting type: Mounting rail TS 35/7.5, Rated cross-section: 4 mm², Width: 6 mm, Colour: Black

Article number	Article name	GTIN (EAN)	Packaging unit
<u>3290.4</u>	FSIK 4/2A BK	4044211180287	25 ST

##INVERSE##CONTA-CONNECT



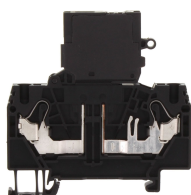
Fuse-disconnect terminal, Push-in connection, Mounting type: Mounting rail TS 35/7.5, Rated cross-section: 4 mm², Width: 6 mm, Colour: Black

Article number	Article name	GTIN (EAN)	Packaging unit
<u>3291.4</u>	FSIK 4/2A/LED 12-30V AC/DC BK	4044211188962	25 ST



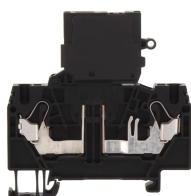
Disconnect-blade terminal, Push-in connection, Mounting type: Mounting rail TS 35/7.5, Rated cross-section: 4 mm², Width: 6.1 mm, Colour: Black

Article number	Article name	GTIN (EAN)	Packaging unit
<u>3239.4</u>	FSIK 4/2A/MT BK	4044211209933	50 ST



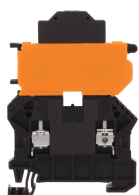
Fuse-disconnect terminal, Push-in connection, Mounting type: Mounting rail TS 35/7.5, Rated cross-section: 4 mm², Width: 6 mm, Colour: Black

Article number	Article name	GTIN (EAN)	Packaging unit
<u>3292.4</u>	FSIK 4/2A/LED 30-60V AC/DC BK	4044211188979	25 ST



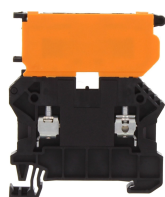
Fuse-disconnect terminal, Push-in connection, Mounting type: Mounting rail TS 35/7.5, Rated cross-section: 4 mm², Width: 6 mm, Colour: Black

Article number	Article name	GTIN (EAN)	Packaging unit
<u>3293.4</u>	FSIK 4/2A/LED 110-250V AC/DC BK	4044211188986	25 ST



Fuse-disconnect terminal, Screw connection, Mounting type: Mounting rail TS 35/7.5, Rated cross-section: 4 mm², Width: 6.1 mm, Colour: Black

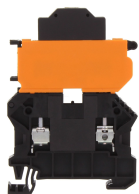
Article number	Article name	GTIN (EAN)	Packaging unit
<u>17172.4</u>	SSIK 4/2A/LED 30-60V AC/DC BK	4044211180447	25 ST



Fuse-disconnect terminal, Screw connection, Mounting type: Mounting rail TS 35/7.5, Rated cross-section: 4 mm², Width: 6.1 mm, Colour: Black

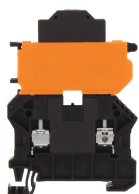
Article number	Article name	GTIN (EAN)	Packaging unit
<u>17150.4</u>	SSIK 4/2A BK	4044211179816	50 ST

##INVERSE##CONTA-CONNECT



Fuse-disconnect terminal, Screw connection, Mounting type: Mounting rail TS 35/7.5, Rated cross-section: 4 mm², Width: 6.1 mm, Colour: Black

Article number	Article name	GTIN (EAN)	Packaging unit
<u>17171.4</u>	SSIK 4/2A/LED 12-30V AC/DC BK	4044211180430	25 ST



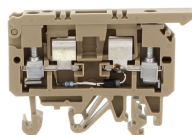
Fuse-disconnect terminal, Screw connection, Mounting type: Mounting rail TS 35/7.5, Rated cross-section: 4 mm², Width: 6.1 mm, Colour: Black

Article number	Article name	GTIN (EAN)	Packaging unit
<u>17173.4</u>	SSIK 4/2A/LED 110-250V AC/DC BK	4044211180454	25 ST



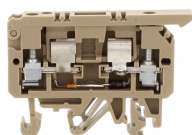
Fuse-disconnect terminal, Screw connection, Mounting type: Mounting rail TS 35/7.5, Rated cross-section: 4 mm², Width: 6.1 mm, Colour: Black

Article number	Article name	GTIN (EAN)	Packaging unit
<u>17174.4</u>	SSIK 4/2A/LED 500V AC/DC BK	4044211180461	25 ST



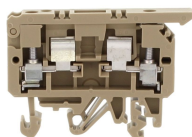
Fuse-disconnect terminal, Screw connection, Mounting type: Mounting rail TS 35/7.5 and TS 32, Rated cross-section: 4 mm², Width: 8 mm, Colour: Beige

Article number	Article name	GTIN (EAN)	Packaging unit
<u>2451.2</u>	STK 1/LED(RD)/60V DC BG	4044211052416	100 ST



Fuse-disconnect terminal, Screw connection, Mounting type: Mounting rail TS 35/7.5 and TS 32, Rated cross-section: 4 mm², Width: 8 mm, Colour: Beige

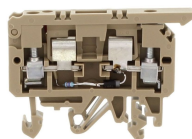
Article number	Article name	GTIN (EAN)	Packaging unit
<u>2457.2</u>	STK 1/LED(RD)/115V AC BG	4044211052478	100 ST



Fuse-disconnect terminal, Screw connection, Mounting type: Mounting rail TS 35/7.5 and TS 32, Rated cross-section: 4 mm², Width: 8 mm, Colour: Beige

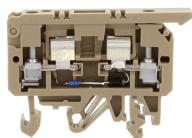
Article number	Article name	GTIN (EAN)	Packaging unit
<u>2190.2</u>	STK 1 BG	4044211050115	100

##INVERSE##CONTA-CONNECT



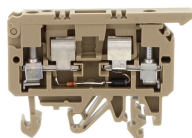
Fuse-disconnect terminal, Screw connection, Mounting type:Mounting rail TS 35/7.5 and TS 32, Rated cross-section: 4 mm², Width: 8 mm, Colour: Beige

Article number	Article name	GTIN (EAN)	Packaging unit
2452.2	STK 1/LED(RD)/115V DC BG	4044211052423	100 ST



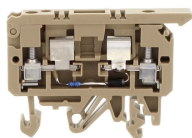
Fuse-disconnect terminal, Screw connection, Mounting type:Mounting rail TS 35/7.5 and TS 32, Rated cross-section: 4 mm², Width: 8 mm, Colour: Beige

Article number	Article name	GTIN (EAN)	Packaging unit
2454.2	STK 1/LED(RD)/24V AC BG	4044211052447	100 ST



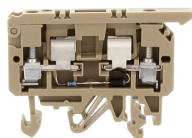
Fuse-disconnect terminal, Screw connection, Mounting type:Mounting rail TS 35/7.5 and TS 32, Rated cross-section: 4 mm², Width: 8 mm, Colour: Beige

Article number	Article name	GTIN (EAN)	Packaging unit
2455.2	STK 1/LED(RD)/48V AC BG	4044211052454	100 ST



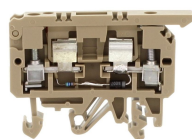
Fuse-disconnect terminal, Screw connection, Mounting type:Mounting rail TS 35/7.5 and TS 32, Rated cross-section: 4 mm², Width: 8 mm, Colour: Beige

Article number	Article name	GTIN (EAN)	Packaging unit
2449.2	STK 1/LED(RD)/24V DC BG	4044211052393	100 ST



Fuse-disconnect terminal, Screw connection, Mounting type:Mounting rail TS 35/7.5 and TS 32, Rated cross-section: 4 mm², Width: 8 mm, Colour: Beige

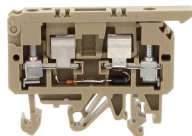
Article number	Article name	GTIN (EAN)	Packaging unit
2453.2	STK 1/LED(RD)/230V DC BG	4044211052430	100 ST



Fuse-disconnect terminal, Screw connection, Mounting type:Mounting rail TS 35/7.5 and TS 32, Rated cross-section: 4 mm², Width: 8 mm, Colour: Beige

Article number	Article name	GTIN (EAN)	Packaging unit
2458.2	STK 1/LED(RD)/230V AC BG	4044211052485	100 ST

##INVERSE##CONTA-CONNECT



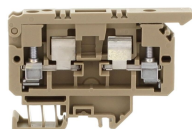
Fuse-disconnect terminal, Screw connection, Mounting type: Mounting rail TS 35/7.5 and TS 32, Rated cross-section: 4 mm², Width: 8 mm, Colour: Beige

Article number	Article name	GTIN (EAN)	Packaging unit
<u>2456.2</u>	STK 1/LED(RD)/60V AC BG	4044211052461	100 ST



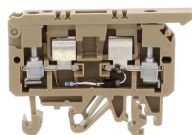
Fused terminal, Screw connection, Mounting type: Mounting rail TS 35/7.5 and TS 32, Rated cross-section: 10 mm², Width: 8 mm, Colour: Black

Article number	Article name	GTIN (EAN)	Packaging unit
<u>17364.4</u>	SIK 10 PA-G BK	4044211178406	50 ST



Fuse-disconnect terminal, Screw connection, Mounting type: Mounting rail TS 15/5.5, Rated cross-section: 4 mm², Width: 8 mm, Colour: Beige

Article number	Article name	GTIN (EAN)	Packaging unit
<u>2191.2</u>	STK 1/15 BG	4044211050160	100



Fuse-disconnect terminal, Screw connection, Mounting type: Mounting rail TS 35/7.5 and TS 32, Rated cross-section: 4 mm², Width: 8 mm, Colour: Beige

Article number	Article name	GTIN (EAN)	Packaging unit
<u>2450.2</u>	STK 1/LED(RD)/48V DC BG	4044211052409	100 ST