

TECHNICAL CHARACTERISTICS

Series of insulators designed to be used as supports or spacers of electrically active parts such as the bars used to create panels.

Made of polyester or polyamide resin with the addition of glass fibres, they guarantee a high mechanical and electrical resistance over time.

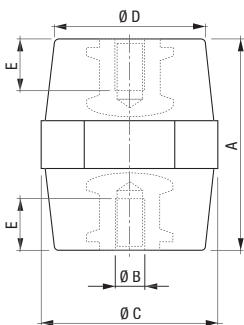
On request the non-absorbing and highly self-extinguishing material used can be provided in its antiacid version, which is particularly suitable for use in contaminated atmospheres.

On both resting sides the insulators feature a brass or white iron zincate threaded female insert that, by means of different types of special headless screws, allows the coupling with the parts concerned, while the central part features a band for the fastening, depending on the model (octagonal or hexagonal).

- Colour: red RAL-3002 (a different colour can be provided on request in case of large orders)
- Arc resistance: > 180 s - ASTM D-495
- Material: self-extinguishing in class V0 (1.6 mm) according to the UL-94 standard
- Operating temperature:
- 40 °C ÷ +130 °C
- Water absorption: < 0.2% - ASTM D-570
- Tracking resistance: 3 W/min - ASTM D-2302
- For the fastening please refer to the section "GV series accessories"

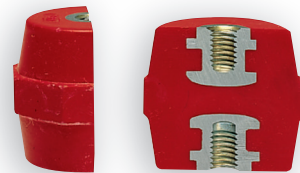


DIMENSIONS (mm)

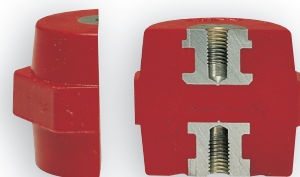


Variable dimensions according to the model.
See tables below.

Octagonal version



Hexagonal version



Load-bearing and spacer insulators SELECTABLE ELEMENTS

DP SERIES

Code	Model	Shape	Material*	Height (mm)			Width (mm)			Tensile strength (daN)	Compressive strength (daN)	Flexural strength (daN)	Rated voltage at 50Hz for 1 min (kV)	Min internal flashover voltage AC (kV)	Operating voltage DC / AC (V)
				(A)	(C)	(D)	(E)	(A)	(C)						
M3 insert															
SA511300	DP6012-03	Hexagonal	PA	12	8	7,8	3	100	100	20	3	8	220		
M4 insert															
SA512100	DP8015-04	Octagonal	PA	15	14	12	4	300	500	60	3	8	250		
SA513900	DP6016-04	Octagonal	PA	16	14	12	4	300	500	60	3	8	250		
SA514700	DP6020-04	Hexagonal	PA	20	17	15	5	360	600	80	5	15	400		
SA517000	DP6026-04	Hexagonal	PA	25,5	19	15	7	580	2300	200	8	25	600		
M5 insert															
SA515400	DP6020-05	Hexagonal	PA	20	17	15	5	360	600	80	5	15	400		
SA519600	DP6026-05	Hexagonal	PA	25,5	19	15	7	580	2300	200	8	25	600		
M6 insert															
SA516200	DP6020-06	Hexagonal	PA	20	17	15	5	360	600	80	5	15	400		
SA520400	DP6026-06	Hexagonal	PA	25,5	19	15	7	580	2300	200	8	25	600		
SA521200	DP6030-06	Hexagonal	PA	30	30	26	9	900	4900	450	10	30	750		
SA524600	DP8035-06	Octagonal	PA	35	41	34	11	1600	6800	550	10	40	750		
SA525300	DP6035-06	Hexagonal	PA	35	32	28	11	1700	6800	700	10	40	1000		
SA529500	DP6036-06	Hexagonal	PA	36	41	35	11	1200	8000	750	12	40	1000		
SA532900	DP6040-06	Hexagonal	PA	40	46	40	11	1300	8300	750	12	40	1000		
SA536000	DP8045-06	Octagonal	PA	45	41	34	15	1300	8300	750	12	40	1000		
SA543600	DP6050-06	Hexagonal	PA	50	36	29	15	1600	6800	750	12	40	1500		
SA555000	DP6063-06	Hexagonal	PA	63	41	31	15	1800	8300	550	20	50	1500		
M8 insert															
SA522000	DP6030-08	Hexagonal	PA	30	30	26	10	900	4900	450	10	30	750		
SA526100	DP8035-08	Octagonal	PA	35	41	34	11	1600	6800	550	10	40	750		
SA527900	DP6035-08	Hexagonal	PA	35	32	28	11	1700	6800	700	10	40	1000		
SA530300	DP6036-08	Hexagonal	PA	36	41	35	11	1200	8000	750	12	40	1000		
SA533700	DP6040-08	Hexagonal	PA	40	46	40	11	1300	8300	750	12	40	1000		
SA537800	DP8045-08	Octagonal	PA	45	41	34	15	1300	8300	750	12	40	1000		
SA538600	DP8046-08	Octagonal	PA	46	50	41	15	1300	8300	750	12	40	1000		
SA540200	DP6046-08	Hexagonal	PA	46	46	40	15	1300	9800	550	12	40	1500		
SA544400	DP6050-08	Hexagonal	PA	50	36	29	15	1600	6800	750	12	40	1500		
SA546900	DP6051-08	Hexagonal	PA	51	50	42	15	1600	9800	750	15	40	1500		
SA549300	DP6055-08	Hexagonal	PA	55	55	46	15	1600	11700	800	15	40	1500		
SA552700	DP8060-08	Octagonal	BMC/PA	60	55	46	15	2000	11700	800	15	40	1500		
SA556800	DP6063-08	Hexagonal	PA	63	41	31	15	1800	8300	550	20	50	1500		
SA558400	DP6065-08	Hexagonal	BMC	65	55	43	15	2000	11700	800	15	50	2000		
SA570900	DP6076-08	Hexagonal	BMC/PA	76	50	36	15	3500	16600	1200	25	50	3600		

Ultimate strength tolerance ±10% 1 daN = 10 N

* PA= Polyamide / BMC= Mass Polyester

Code	Model	Shape	Material*	Height (mm)			Width (mm)			Tensile strength (daN)	Compressive strength (daN)	Flexural strength (daN)	Rated voltage at 50Hz for 1 min (kV)	Min internal flashover voltage AC (kV)	Operating voltage DC / AC (V)
				(A)	(C)	(D)	(E)	(A)	(C)						
M10 insert															
SA528700	DP6035-10	Hexagonal	PA	35	32	28	10	1700	6800	700	10	40	1000		
SA531100	DP6036-10	Hexagonal	PA	36	41	35	10	1200	8000	750	12	40	1000		
SA534500	DP6040-10	Hexagonal	PA	40	46	40	10	1300	8300	750	12	40	1000		
SA539400	DP8045-10	Octagonal	PA	45	50	41	15	1300	8300	750	12	40	1000		
SA541000	DP6046-10	Hexagonal	PA	46	46	40	15	1300	9800	550	12	40	1500		
SA545100	DP6050-10	Hexagonal	PA	50	36	29	15	1600	6800	750	12	40	1500		
SA547700	DP6051-10	Hexagonal	PA	51	50	42	15	1600	9800	750	15	40	1500		
SA550100	DP6055-10	Hexagonal	PA	55	55	46	15	1600	11700	800	15	40	1500		
SA553500	DP8060-10	Octagonal	BMC/PA	60	55	46	15	2000	11700	800	15	40	1500		
SA557600	DP6063-10	Hexagonal	PA	63	41	31	15	1800	8300	550	20	50	1500		
SA559200	DP6065-10	Hexagonal	BMC	65	55	43	15	2000	11700	800	15	50	2000		
SA561800	DP6070-10	Hexagonal	BMC/PA	70	65	52	25	3000	16600	1200	23	50	2000		
SA565900	DP8075-10	Octagonal	BMC	75	65	52	25	3500	12000	1200	25	50	2000		
SA571700	DP6076-10	Hexagonal	BMC/PA	76	50	36	25	3500	16600	1200	25	50	3600		
SA573300	DP6080-10	Hexagonal	BMC/PA	80	65	52	25	3500	16600	1300	25	50	3600		
M12 insert															
SA535200	DP6040-12	Hexagonal	PA	40	46	40	12	1300	8300	750	12	40	1000		
SA542800	DP6046-12	Hexagonal	PA	46	46	40	14	1300	9800	550	12	40	1500		
SA548500	DP6051-12	Hexagonal	PA	51	50	42	14	1600	9800	750	15	40	1500		
SA551900	DP6055-12	Hexagonal	PA	55	55	46	14	1600	11700	800	15	40	1500		
SA560000	DP6065-12	Hexagonal	BMC	65	55	43	14	2000	11700	800	15	50	2000		
SA562600	DP6070-12	Hexagonal	BMC/PA	70	65	52	25	3000	16600	1200	23	50	2000		
SA566700	DP8075-12	Octagonal	BMC	75	65	52	25	3500	12000	1200	25	50	2000		
SA572500	DP6076-12	Hexagonal	BMC/PA	76	50	36	25	3500	16600	1200	25	50	3600		
SA574100	DP6080-12	Hexagonal	BMC/PA	80	65	52	25	3500	16600	1300	25	50	3600		
SA576600	DP8100-12	Octagonal	BMC/PA	100	65	52	25	4000	16700	1300	30	50	3600		
SA578200	DP8102-12	Octagonal	BMC/PA	102	65	52	25	4000	16700	1300	30	50	3600		
SA554300	DP6060-12	Hexagonal	BMC	60	55	43	14	2000	11700	800	15	40	1500		
M16 insert															
SA563400	DP6070-16	Hexagonal	BMC/PA	70	65	52	25	3000	16600	1200	23	50	2000		
SA567500	DP6076-16	Hexagonal	BMC	76	50	36	25	3500	12000	1200	25	50	2000		
SA569100	DP8075-16	Octagonal	BMC	75	65	52	25	3500	16600	1200	25	50	3600		
SA575800	DP6080-16	Hexagonal	BMC/PA	80	65	52	25	3500	16600	1300	25	50	3600		
SA577400	DP8100-16	Octagonal	BMC/PA	100	65	52	25	4000	16700	1300	30	50	3600		
SA579000	DP8102-16	Octagonal	BMC/PA	102	65	52	25	4000	16700	1300	30	50	3600		

Ultimate strength tolerance ±10% 1 daN = 10 N

* PA= Polyamide / BMC= Mass Polyester