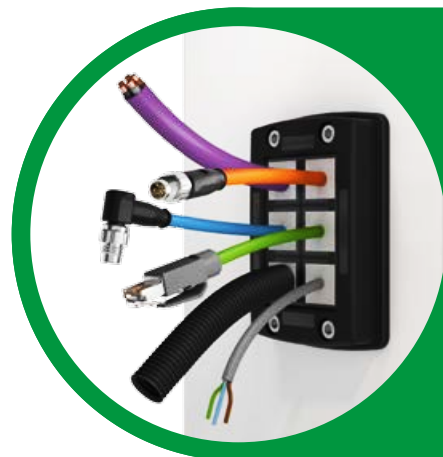


CABLE MANAGEMENT SYSTEMS

KES Hygienic FOOD INDUSTRY System



Catalogue 08



 **CONTA CLIP**

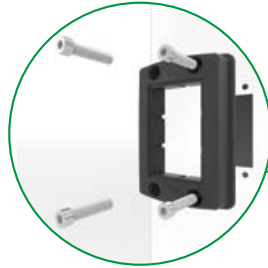
KDS CLICK

by CONTA-CLIP

An overview of your advantages

Attaching the frame

The one-piece frame can be easily and quickly attached to the wall.



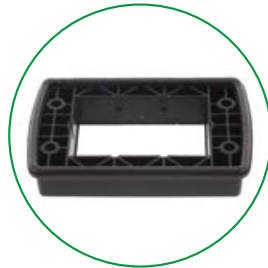
Quick inside-outwards assembly for easier servicing work

The frame does not need to be disassembled if your requirements change or if you're carrying out service work.



Captive seal

The foamed-in frame gasket eliminates the risk of incorrect assembly (forgotten gasket) and speeds up the assembly process.



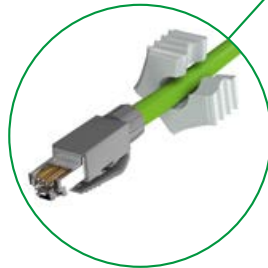
Smart separation of the seals

The wave-cut profile makes them easy to install and ensures a perfect fit around the cables.



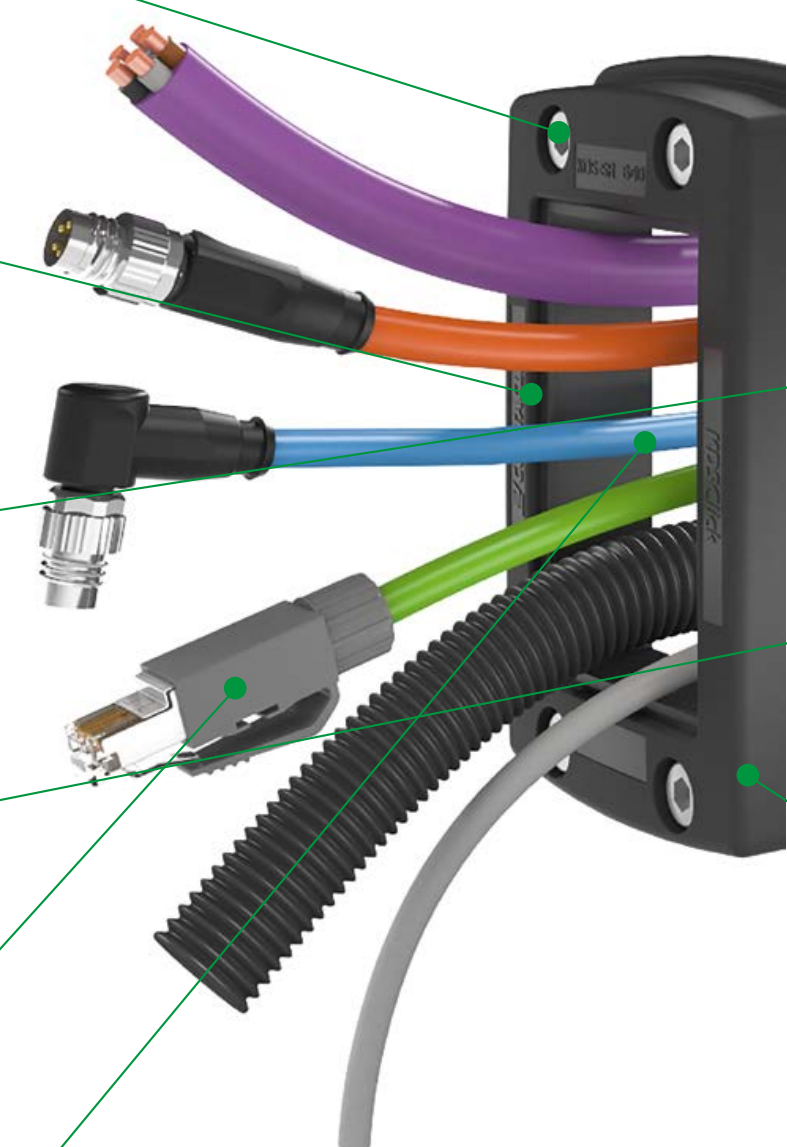
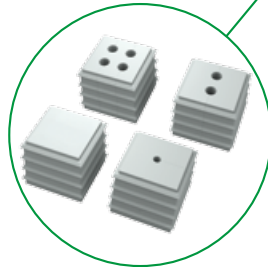
No loss of guarantee: assembled cables

No need to disassemble and reconnect connectors, so manufacturer's warranty is not voided.



Versatile, high-density assemblies are possible

1-way, 2-way, and 4-way seals provide you with excellent versatility for cable management.



IP66

It's easy.
It's quick.
It's **KDSClick**.



Outstanding versatility with optimized warehousing

The frames, inlays and seals can be combined in many ways – ensuring you many versatile configuration options.



Safe and quick installation with feedback

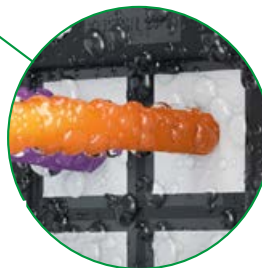
An audible “click” confirms that the inlay and frame have been properly installed.

Click



Integrated strain relief

The absolute tightness of the seals ensures a strain relief mechanism for the cables working towards accordance with DIN EN 62444.



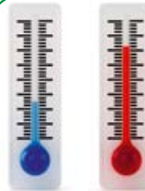
Outstanding IP66 seal

Multi-resistant, tapered seals feature inner and outer sealing gills.



Inner locking frame

The optional locking frame ensures that the seals cannot be pushed out without using tools.



Can be used from –40 °C to +120 °C

Materials contain no halogen or silicone, suitable for many different applications.



IP66

**NEMA
TYPE
12**

**NEMA
TYPE
4X**

ECOLAB
certified

RoHS
compliant

Made in
Germany



The basic components of the modular system

Frames. Inlays. Seals. The modular design – 3 basic components – provides more versatility, variability and variety.

1. Frame

Made from a single mould, the one-piece frame is quick and easy to assemble. It is made of sturdy, glass-fibre reinforced plastic. The foamed seal guarantees an optimal seal with IP66 protection, even on painted or rough surfaces.



2. Inlays

The click-in inlays enable needs-based dimensioning of the frame opening, corresponding to the seal being used. An audible "click" confirms a correct installation. So you can variably configure cable entries to match various requirements (for cables, lines, tubing, pneumatic and hydraulic lines).



3. Seals

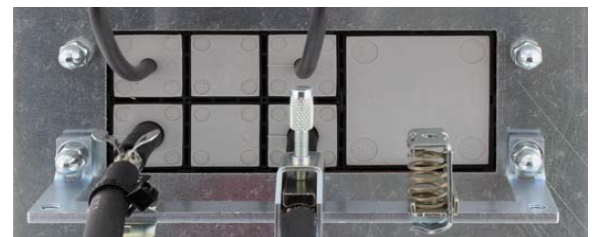
The conical shape of the seal makes it easy to press in. This also reliably seals the gaps and ensures strain relief in accordance with DIN EN 62444. The seals are installed by pressing them from the inside outwards into the openings of the previously installed inlays. Their wave-cut profile makes them easy to install and ensures a perfect fit around the cables. There are currently over 90 different seals that can be used for sealing cables of various diameters and sizes.



(. 9A7 'S\ JYX7 cbbYWjcb 'FUj'g

The KDS-EMV-SAB shield-connection rails, when used together with our different shield-connection clips, enable cables to be shielded in a quick, practical and uncomplicated process. The cables can be routed through the cable entry systems into housings or switchgear cabinets.

The KDS-EMV-SAB shield-connection rails are fastened on the inside of the switchgear cabinet using screws, which are required for mounting the KDS/KES system. The appropriate shield clip (depending on the cable diameter) can then be snapped onto the shield-connection rail.



Your advantages: More versatility and safety

The seals can be removed by pressing from the outside inwards. Changes, retrofits, servicing or the readjustment of the cable lengths can be made at any time without dismantling the frame. Unwanted manipulations from the outside can be prevented by using an optional inner locking frame.

KDS CLICK CABLE ENTRY SYSTEMS



KDS - FRAMES

KDS-SR1-4BK	KDS-Click System Frame,IP66, Black
KDS-SR6/10BK	KDS-Click System Frame, IP66, Black
KDS-SR8/16BK	KDS-Click System Frame, IP66, Black
KDS-SR10/24BK	KDS-Click System Frame, IP66, Black
KDS-IVR1-4BK	KDS-Click Inner Locking Frame for KDS-SR1-4BK
KDS-IVR6/10BK	KDS-Click Inner Locking Frame for KDS-SR6/10BK
KDS-IVR8/16BK	KDS-Click Inner Locking frame for KDS-SR8/16BK
KDS-IVR10/24BK	KDS-Click Inner Locking Frame for KDS-SR10/24BK



KDS - FP FLANGE PLATES

KDS-FP-2x10/24BK	KDS FP Flange Plate - 2 x 10/24 - IP66, Black
KDS-FP-3x10/24BK	KDS-FP Flange Plate - 3 x 10/24 - IP66, Black
KDS-FP-IVR-OG	KDS-FP Flange Inner Lock



KDS - FB FRAMES FOR FLAT CABLES

KDS-SR-FB2/A	KDS-FB System Frame,IP66, Black
KDS-SR-FB2/B	KDS-FB System Frame,IP66, Black
KDS-SR-FB4/F	KDS-FB System Frame,IP66, Black



INLAYS

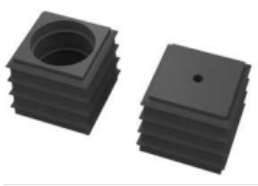
KDS-INLAY-1BK	KDS-Click Internal Inlay - 1-Way
KDS-INLAY-2BK	KDS-Click Internal Inlay - 2-Way
KDS-INLAY-4BK	KDS-Click Internal Inlay - 4-Way
KDS-INLAY-6BK	KDS-Click Internal Inlay - 6-Way



EMC SHIELD CONNECTION

KDS-EMV-SAB-1-4	KDS-Click Shield Connection Rail for KDS-SR1-4 Frame
KDS-EMV-SAB-6/10	KDS-Click Shield Connection Rail for KDS-SR6/10 Frame
KDS-EMV-SAB-8/16	KDS-Click Shield Connection Rail for KDS-SR8/16 Frame
KDS-EMV-SAB-10/24	KDS-Click Shield Connection Rail for KDS -SR10/24 Frame

KDS CABLE ENTRY SYSTEMS



SEAL - SMALL BLACK

KDS-DE-1.5-2BK	KDS System Seal, TPE, 1.5-2mm cable diameter
KDS-DE-2-3BK	KDS System Seal, TPE, 2-3mm cable diameter
KDS-DE-3-4BK	KDS System Seal, TPE, 3-4mm cable diameter
KDS-DE-4-5BK	KDS System Seal, TPE, 4-5mm cable diameter
KDS-DE-5-6BK	KDS System Seal, TPE, 5-6mm cable diameter
KDS-DE-6-7BK	KDS System Seal, TPE, 6-7mm cable diameter
KDS-DE-7-8BK	KDS System Seal, TPE, 7-8mm cable diameter
KDS-DE-8-9BK	KDS System Seal, TPE, 8-9mm cable diameter
KDS-DE-9-10BK	KDS System Seal, TPE, 9-10mm cable diameter
KDS-DE-10-11BK	KDS System Seal, TPE, 10-11mm cable diameter
KDS-DE-11-12BK	KDS System Seal, TPE, 11-12mm cable diameter
KDS-DE-12-13BK	KDS System Seal, TPE, 12-13mm cable diameter
KDS-DE-13-14BK	KDS System Seal, TPE, 13-14mm cable diameter
KDS-DE-14-15BK	KDS System Seal, TPE, 14-15mm cable diameter
KDS-DE-15-16BK	KDS System Seal, TPE, 15-16mm cable diameter
KDS-DE/B	KDS System Seal, TPE, Blind



SEAL - SMALL 2 & 4 HOLE

KDS-DE-2x4-5BK	KDS System Seal, TPE, Double 4-5mm cable diameter
KDS-DE-2x5-6BK	KDS System Seal, TPE, Double 5-6mm cable diameter
KDS-DE-2x6.5BK	KDS System Seal, TPE, Double 6.5mm cable diameter
KDS-DE-2x7BK	KDS System Seal, TPE, Double 7mm cable diameter
KDS-DE-2x8BK	KDS System Seal, TPE, Double 8mm cable diameter
KDS-DE-4x2-3BK	KDS System Seal, TPE, 4 x 2-3mm cable diameter
KDS-DE-4x3-4BK	KDS System Seal, TPE, 4 x 3-4mm cable diameter
KDS-DE-4x4.5BK	KDS System Seal, TPE, 4 x 4.5mm cable diameter
KDS-DE-4x5BK	KDS System Seal, TPE, 4 x 5mm cable diameter
KDS-DE-4x6BK	KDS System Seal, TPE, 4 x 6mm cable diameter



SEAL - SMALL OTHER

KDS-DE/K2-11BK	KDS Cone Style Seal, TPE, 2-11mm cable diameter
----------------	---



SEAL - FLAT CABLE

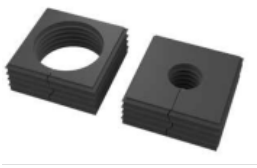
KDS-DE-FB2/B	KDS FB Flat Cable Seal, TPE, 32.5-38mm x 5-5.5mm cable, Grey
KDS-DE-FB2/C	KDS FB Flat Cable Seal, TPE, 45-50.5mm x 6-6.5mm cable, Grey



SEAL - SMALL GREY

KDS-DE-4-5GR	KDS System Seal, TPE, 4-5mm cable diameter
KDS-DE-6-7GR	KDS System Seal, TPE, 6-7mm cable diameter
KDS-DE/B GR	KDS System Seal, TPE, Blind

KDS CABLE ENTRY SYSTEMS



SEAL - LARGE BLACK

KDS-DEG-14-15BK	KDS System Seal, TPE, 14-15mm cable diameter
KDS-DEG-15-16BK	KDS System Seal, TPE, 15-16mm cable diameter
KDS-DEG-16-17BK	KDS System Seal, TPE, 16-17mm cable diameter
KDS-DEG-17-18BK	KDS System Seal, TPE, 17-18mm cable diameter
KDS-DEG-18-19BK	KDS System Seal, TPE, 18-19mm cable diameter
KDS-DEG-19-20BK	KDS System Seal, TPE, 19-20mm cable diameter
KDS-DEG-20-21BK	KDS System Seal, TPE, 20-21mm cable diameter
KDS-DEG-21-22BK	KDS System Seal, TPE, 21-22mm cable diameter
KDS-DEG-22-23BK	KDS System Seal, TPE, 22-23mm cable diameter
KDS-DEG-23-24BK	KDS System Seal, TPE, 23-24mm cable diameter
KDS-DEG-25-26BK	KDS System Seal, TPE, 25-26mm cable diameter
KDS-DEG-27-28BK	KDS System Seal, TPE, 27-28mm cable diameter
KDS-DEG-28-29BK	KDS System Seal, TPE, 28-29mm cable diameter
KDS-DEG-29-30BK	KDS System Seal, TPE, 29-30mm cable diameter
KDS-DEG-30-31BK	KDS System Seal, TPE, 30-31mm cable diameter
KDS-DEG-32-33BK	KDS System Seal, TPE, 32-33mm cable diameter
KDS-DEG-33-34BK	KDS System Seal, TPE, 33-34mm cable diameter
KDS-DEG-34-35BK	KDS System Seal, TPE, 34-35mm cable diameter
KDS-DEG/B	KDS System Seal, Large Format TPE, Blind



SEAL - LARGE OTHER

KDS-DEG/1xASIBK	KDS System Seal, TPE, suitable for ASI cable
KDS-DEG/K7-24BK	KDS System Cone Seal, TPE, 7 to 24mm cable diameter



INSERTION TOOL

KDS-BW1	KDS System Actuating Tool
---------	---------------------------



SEPARABLE CABLE GLANDS

KDS-KV-M20BK	KDS Gland & Locknut M20 (small inserts)
KDS-KV-M50BK	KDS Gland & Locknut M50 (large inserts)

KES Cable entries

When feeding in non-assembled cables, lines and pneumatic hoses (without connected plugs), CONTA-CLIP has a wide range of products that offer alternatives to cable glands or single-membrane feed-throughs.

The KES cable entries are very flat; they enable space-saving professional cable entries with a very tight seal.

Due to its high assembly density, the KES system is well suited for applications where the installations are carried out in confined spaces.



Two components

The KES system consists of two components. The inner core, made of polyamide PA 6.6 GF, is crucial for the stability and strain relief; it is over-moulded in the sealing areas with TPE to ensure an IP66 seal.



Many cables in a confined space

Many cables (with various diameters from 3.2 to 20.5 mm) can be inserted in a confined space and double sealed (IP66) thanks to the special construction of the conical grommets. The installation can use a screw-on outer mount optionally using threaded bushes from the inside, or snapping on without screws.

In order to insert the cables, the corresponding membrane (with marked centring point) must be pierced; the cables are then simply guided through.



UL 94 V-0 classification

The KES is designed for use in mounting cut-outs together with 24-pin heavy-duty connectors. All variants are available in grey and black. The materials used comply with the UL 94 V-0 classification.



Your advantages

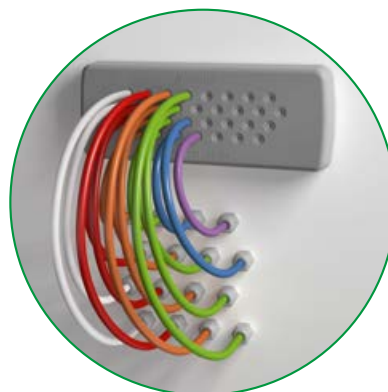
- Can be screwed / snapped on
- Very high stability (core: PA 6.6 GF)
- Outstanding strain relief (cone grommet)
- Very simple assembly (with marked centring point)
- High-density assemblies
- Double sealing / IP66 seal
- Hygienic design: no dirt-prone niches
- Large assortment (48 varieties)
- UL-listed plastic materials
- UL 94 V-0

KES Cable entries

An overview of your advantages

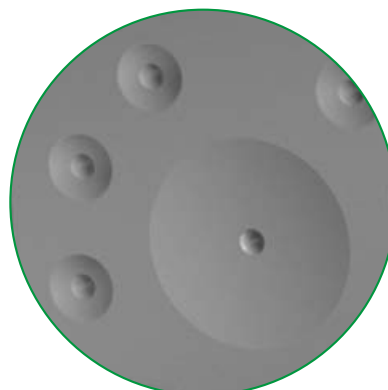
High-density assemblies

In contrast to the classic cable gland, the KES allows many cables, hoses and lines to be installed in a space-saving manner, even in cramped installation conditions.



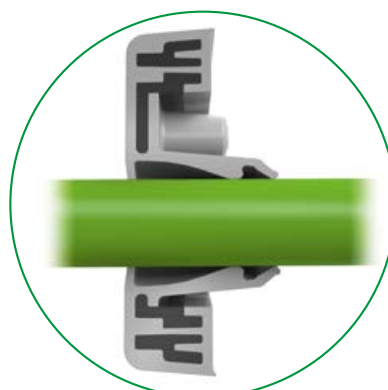
Very precise

The piercing points are clearly marked so that cables and hoses can be centred precisely.



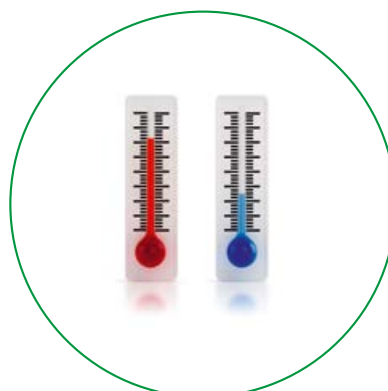
Integrated strain relief

The special shape of the multi-layered membrane cone grommet ensures an optimal strain relief mechanism for the cables, in accordance with DIN EN 62444.



Can be used from -40 °C to +90 °C

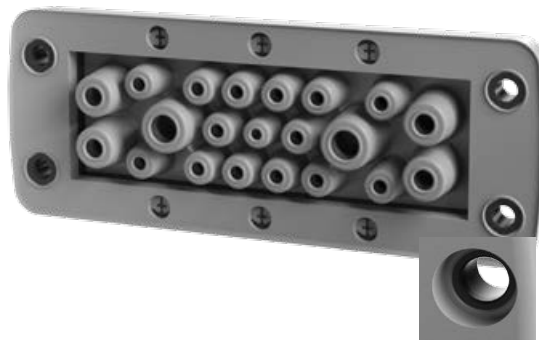
Materials contain no halogen or silicone; suitable for many different applications.



Wide variety of KES variants

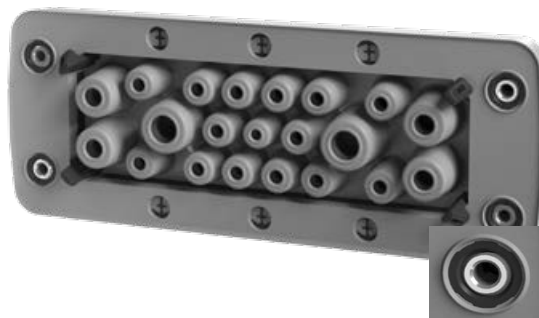
You can choose one of three attachment options to fit your requirements.

1. Screw-on mount



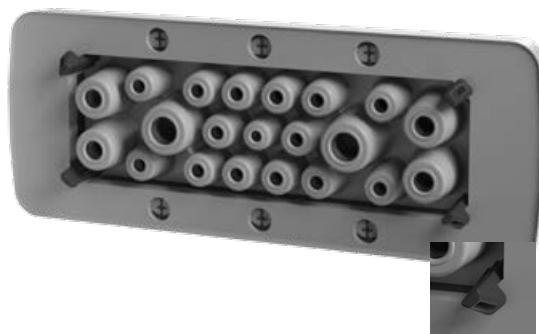
The KES (without threaded bush) is screwed from the outside onto the housing wall.

2. Screw-on mount with threaded bushes and latching clips - HYGIENIC FOOD INDUSTRY DESIGN



Using the latching clips, the KES-GB latches onto the outside of the housing wall. It is then screwed on from the inside, through the housing wall, using the integrated threaded bushes.

3. Latched (snap-on) mount using latching hooks - HYGIENIC FOOD INDUSTRY DESIGN



The KES-R is latched from outside to the housing wall using the latching clips.

KDS CABLE ENTRY SYSTEMS



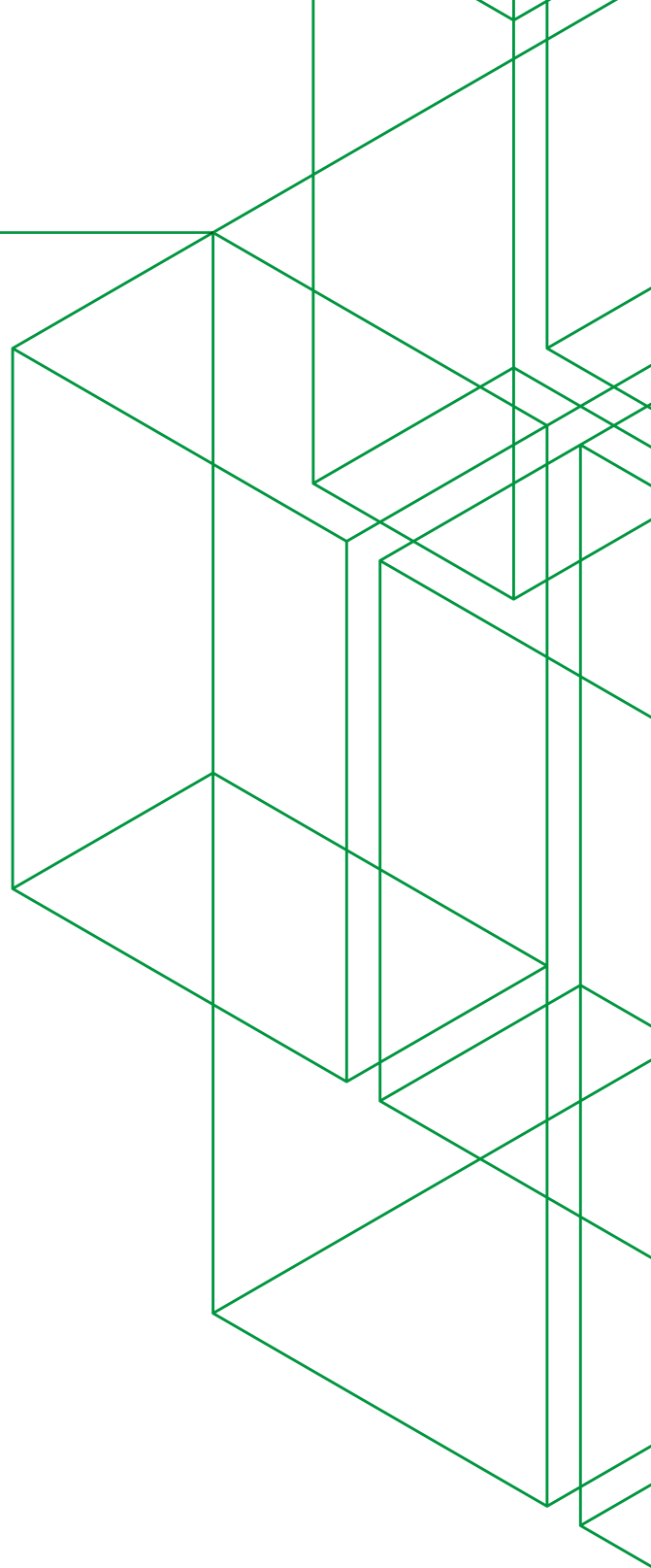
KES CABLE ENTRIES - IP66

KES14/24GR	14-Way Cable Entry - 5x3.2-6.3, 2x4-7.5, 3x5.5-10.5, 1x8-12.5, 3x12-16.2mm
KES16-1/24GR	16-Way Cable Entry - 2x3.2-6.3, 9x4-7.5, 1x5.5-10.5, 1x8-12.5, 3x12-16.2mm
KES14/24BK	14-Way Cable Entry - 5x3.2-6.3, 2x4-7.5, 3x5.5-10.5, 1x8-12.5, 3x12-16.2mm
KES16-1/24BK	16-Way Cable Entry - 2x3.2-6.3, 9x4-7.5, 1x5.5-10.5, 1x8-12.5, 3x12-16.2mm
KES20/24BK	20-Way Cable Entry - 12x3.2-6.3mm & 8x5.5-10.5mm - Black
KES32/24BK	32-Way Cable Entry - 32x3.2-6.3mm - Black
KES-R32/24GR	32-Way Cable Entry - 32x3.2-6.3mm - Grey - Snap On Mounting
KES-R32/24BK	32-Way Cable Entry - 32x3.2-6.3mm - Black - Snap On Mounting



HYGIENIC (FOOD INDUSTRY) KES CABLE ENTRIES - IP66

KES-GB14/24GR	14-Way Cable Entry - 5x3.2-6.3, 2x4-7.5, 3x5.5-10.5, 1x8-12.5, 3x12-16.2mm
KES-GB16-1/24GR	16-Way Cable Entry - 2x3.2-6.3, 9x4-7.5, 1x5.5-10.5, 1x8-12.5, 3x12-16.2mm
KES-GB20/24GR	20-Way Cable Entry - 12x3.2-6.3mm & 8x5.5-10.5mm
KES-GB32/24GR	32-Way Cable Entry - 32x3.2-6.3mm
KES-R16-1/24GR	16-Way Cable Entry - 2x3.2-6.3, 9x4-7.5, 1x5.5-10.5, 1x8-12.5, 3x12-16.2mm
KES-R32/24GR	32-Way Cable Entry - 32x3.2-6.3mm



PO Box 51184
Tawa, Wellington
New Zealand

EMAIL:
info@mardag.co.nz
orders@mardag.co.nz

PHONE:
0800 627 324 (MARDAG)

WEBSITE:
www.mardag.co.nz